

GUIDE TO WISCONSIN TROUT FISHING REGULATIONS 2023-2024



Wisconsin Department of Natural Resources
Bureau of Fisheries Management



as 1-2-3

- 1** Use the index map (back cover) to find the area you would like to fish.
- 2** Find the county list and locate the water that you would like to fish.
- 3** Follow the Trout Regulations Key (p. 9) or the specific regulation for that water. If the water is not listed, use the “all waters not listed” regulation category.

***On the cover:** Wisconsin Trout Unlimited conducts an annual trout stamp contest with the winning art displayed on the cover of this publication. This year's winning trout art is a brook trout from artist Mark Kanitz of Markesan, Wisconsin.*

Free Fishing Weekends— Jan. 21-22, 2023, June 3-4, 2023 and Jan. 20-21, 2024

Every year, the first consecutive Saturday and Sunday in June and the third consecutive Saturday and Sunday in January are designated as Free Fishing Weekend throughout the state of Wisconsin. Residents and nonresidents of all ages can fish without a fishing license (and trout stamps) over these two days. However, all other fishing regulations (length limits, bag limits, seasons, etc.) apply. Please note: You can only fish for trout where the trout season is open.

Purchase your license online at:

GoWild.WI.Gov

*Find trout and trout fishing information online at:
dnr.wi.gov/topic/fishing/trout*

** This pamphlet is an interpretive summary of Wisconsin's fishing laws and regulations. For complete fishing laws and regulations, consult the Wisconsin State Statutes Chapter 29 or the Administrative Code of the Department of Natural Resources. Consult the legislative website - <http://docs.legis.wisconsin.gov/> - for more information.

The Wisconsin Department of Natural Resources provides equal opportunity in its employment, programs, services, and functions under an Affirmative Action Plan. If you have any questions, please write to Equal Opportunity Office, Department of the Interior, Washington, D.C. 20240. The Department of Natural Resources is committed to serving people with disabilities. If you need this information in an alternative format, please call (608) 267-7498.



YOUR GUIDE TO REGULATIONS AND BETTER TROUT FISHING

This guide is specific to inland (including streams that flow into the Great Lakes) trout and salmon fishing. For general fishing rules, which also apply to trout and salmon fishing, refer to the *Guide to Wisconsin Hook and Line Fishing Regulations, 2023-2024* (Publication FH-301). This pamphlet is a summary of Wisconsin's trout and salmon fishing laws and regulations. For complete fishing laws and regulations, consult the Wisconsin Administrative Code of the Department of Natural Resources (http://docs.legis.wisconsin.gov/code/admin_code/nr/001/20).

TABLE OF CONTENTS

Trout And Salmon Fishing Restrictions.....	1
Early Catch And Release Season.....	2
Lake Michigan Streams.....	2
Lake Superior Streams	3
Specific Waters Listed By County	4
Trout Regulations Key And Maps.....	9
Trout Fishing Made Easy.....	31
Public Or Private? Am I Trespassing?.....	32
Trout Regulations And Opportunities User Tool (TROUT).....	32
Identifying Wisconsin's Trout And Salmon	33

TROUT AND SALMON FISHING RESTRICTIONS - *Please remember it is illegal...*

- To fish without a Wisconsin fishing license or stamp as required. You must have an inland trout stamp if you need a fishing license and intend to fish for trout or salmon in inland waters, including streams flowing into Lake Superior. You need a Great Lakes salmon and trout stamp to fish for trout and salmon in streams that flow into Green Bay and Lake Michigan from their mouths up to the first dam or lake. Note: A Great Lakes salmon and trout is required to fish Lake Superior and Lake Michigan, proper. A 2-day resident inland Lake trout license may be purchased to fish for Lake trout (*Salvelinus namaycush*) only in inland lakes (no general fishing license or stamp is required).
- To fish for any species of fish in trout streams when the trout season is closed except that rough fish may be taken by hand.
- To possess a fish that is below the minimum length limit or above the maximum length limit established for the waters being fished.
- To take, catch, kill, or fish for any variety of fish in excess of the daily bag limit or total daily bag limit (see definitions below).
- To possess or fish for more than the daily bag limit of fish while you're fishing or while you're on the water, shore or bank of the water, or on the ice, regardless of the number of days fished
- To possess more than the possession limit at any time. The possession limit on trout in inland waters is 10.
- To move live fish away from a water, except minnows that were purchased from a licensed bait dealer under certain conditions. Check the DNR website for more information - www.dnr.wi.gov/topic/fishing.
- To use or release minnows on rehabilitated trout lakes that are identified with posted signs.
- To possess any live bait or any other baits, hooks or lures other than artificial lures while on the waters, banks or shores of waters where only the use of artificial lures is allowed.
- To remove fish eggs for bait from under-sized fish or fish caught during the closed season for that species. Fish eggs may be removed from legal-sized fish and the fish returned to the water, but the fish would count toward the angler's daily bag limit. Live fish eggs cannot be transported away from the water.
- To remove insect larvae from any trout stream or spring hole tributary to a trout stream for use or sale as bait. However, a licensed angler may take insect larvae or nymphs from trout streams by hand during the open trout season for their immediate personal use as bait in the stream from which taken. When done fishing, all larvae or nymphs must be returned to the stream prior to leaving the stream from which taken. By hand means no use of small seines or nets or other devices.

Early Catch And Release Season for trout - First Saturday in January at 5 a.m. through the Friday preceding the First Saturday in May at midnight on the waters listed in 1 through 19 below:

Jan. 7, 2023 through May 5, 2023

- ✓ All trout caught during this time must be immediately released (The daily bag limit is 0).
- ✓ Only artificial lures may be used.

Note: The early season does not apply to spring ponds, ponds, lakes, Lake Michigan tributaries, major Green Bay tributaries, all other tributary streams, rivers and ditches to Green Bay upstream to the first dam or lake, or streams flowing into Lake Superior and their tributaries upstream to the first impassable barrier.

Early Season Streams

1. All streams in Adams, Barron, Buffalo, Burnett, Chippewa, Clark, Columbia, Crawford, Dane, Dodge, Dunn, Eau Claire, Fond du Lac, Grant, Green, Green Lake, Iowa, Jackson, Jefferson, Juneau, Kenosha, La Crosse, Lafayette, Milwaukee, Monroe, Ozaukee, Pepin, Pierce, Polk, Price, Racine, Richland, Rock, Rusk, St. Croix, Sauk, Sawyer, Sheboygan, Taylor, Trempealeau, Vernon, Walworth, Washburn, Washington, Waukesha and Wood counties are open. (*Note: all streams in Brown Calumet, Door, Kewaunee, Manitowoc, Menominee, Outagamie and Winnebago counties are closed*)
2. Ashland County—All streams, except Lake Superior streams from their mouths upstream to the first impassable barrier.
3. Bayfield County—All streams, except Lake Superior streams from their mouths upstream to the first impassable barrier.
4. Douglas County—All streams, except Lake Superior streams from their mouths upstream to the first impassable barrier.
5. Florence County—Pine River and Popple River
6. Forest County—Peshtigo River downstream from U.S. Highway 8, Pine River downstream from STH 55, Popple River and Rat River downstream from Scattered Rice lake.
7. Iron County—All streams, except Lake Superior streams from their mouths upstream to the first impassable barrier.
8. Langlade County—Wolf River and main stem of Plover River upstream of STH 153, excluding tributaries and off-channel springs.
9. Lincoln County—All streams west of STH 51 and Prairie River downstream from CTH J.
10. Marathon County—Black Creek (mouth at T27N R7E S4), Black Creek (T30N, R3E), Grass Creek, McGinnes Creek, Fourmile Creek, Noisy Creek and main stem of the Plover River upstream of STH 153, excluding tributaries and off-channel springs.
11. Marinette County—North Branch Pemebonwon River downstream from STH 141, Peshtigo River upstream from CTH C, Pike River between CTH V and CTH K and Rat River.
12. Marquette County—Chaffee Creek downstream from CTH B, Klawitter Creek, Lawrence Creek, Lunch Creek, Mecan River upstream from STH 22, Neenah Creek, O’Keefe Creek, Wedde Creek and Westfield Creek.
13. Oconto County—North Branch Oconto River downstream from STH 64 and South Branch Oconto River downstream from CTH AA.
14. Oneida County—All streams west of STH 51 and Bearskin Creek.
15. Portage county—Ditches 1 through 6 downstream from Townline Road and the Waupaca (Tomorrow) River from the Amherst Dam (Portage County) downstream to STH 54 (Waupaca County)
16. Shawano County—Middle Branch Embarrass River from Homme Dam to STH 29, North Branch Embarrass River from Tilleda Dam downstream to Leopolis Dam and Red River downstream from lower Red Lake Dam.
17. Vilas County—Mishonagon Creek.
18. Waupaca County—North Branch Little Wolf River from CTH P to CTH J, South Branch Little Wolf River and the Waupaca (Tomorrow) River from STH 54 (Waupaca County) upstream to the Amherst Dam (Portage County).
19. Waushara County—Carter Creek, Leola Ditch, Mecan River downstream from 11th Road, Pine River downstream from CTH K to Poy Sippi Pond, Roche-a-Cri Creek, Willow Creek from Blackhawk Road to 29th Lane and White River from STH 21 to lower White River Millpond.

General Open Season for trout and salmon in inland streams, springs and spring ponds - First Saturday in May at 5 a.m. through Oct. 15 except as listed in the *Specific Waters Listed by County* section.

May 6, 2023 through Oct. 15, 2023

General Open Season for trout and salmon in inland lakes and ponds - First Saturday in May at 5 a.m. through the first Sunday in March of the following year except as listed in the *Specific Waters Listed by County* section.

May 6, 2023 through March 3, 2024

General open season daily bag, total daily bag and possession limits: The **daily bag limit** is the maximum number of fish that an angler may reduce to his/her possession *from a specified waterbody or a portion of a waterbody in one day*. The **total daily bag limit** is the maximum number of fish that an angler may reduce to his/her possession in one day *from all waters or portions of waters fished for that day*. An angler may combine the catch of a particular species from multiple waters until the **total daily bag limit** is reached as long as the daily bag limit for each body of water is never exceeded. Be aware that while on the water, bank or shore of the water, or on the ice, you may not possess more than the daily limit for that body of water. For example, an angler catches a daily limit of Brown trout from a 3-bag limit stream. The angler **cannot** then fish another stream with a 3-Brown trout limit while still possessing the 3 Brown trout from the previous stream. The **total daily bag limit** is 5 trout and salmon in total, but only 2 may be Lake trout, except as listed in the specific waters listed by county. The **possession limit** is the maximum number of fish that a person may possess at any time. The **possession limit** is 10.

Lake Trout Fishing In Inland Lakes
(*Salvelinus namaycush*)



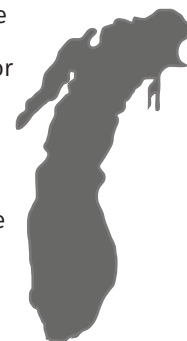
Open season: Jan. 7, 2023 - Sept. 30, 2023; Length limit: 17"; Daily bag limit: 2; Waters: Green Lake Co. - Green Lake and tributaries upstream to the first dam; Langlade Co. - Goto Lake; Walworth Co. - Lake Geneva; Washington Co. - Big Cedar Lake

Open season: May 6, 2023 - Sept. 30, 2023; Length limit: 30"; Daily bag limit: 1; Waters: Forest Co. - Lucerne Lake; Oneida Co. - Big Carr Lake; Vilas Co. - Black Oak, Little Trout, Long, Trout, White Sand (Boulder Junction) lakes

Note: Lake trout found in waters not listed above fall under the base regulation for that county.

Lake Michigan Streams

Lake Michigan streams up to the first dam, lake or designated tributary are shown in black on the maps. See the inland stream regulations for all stream segments above the first lake, dam or designated tributary mouth (colored coded green, yellow or red.)



Except as otherwise specified, all streams flowing into Lake Michigan and Green Bay have the following regulations from their mouths upstream to the first dam, lake or designated tributary; including the Little River from its confluence with the Oconto River upstream to the STH 141 bridge; the entire Kewaunee River and its tributaries, except Little Scarboro Creek, Scarboro Creek, Roger Creek and Casco Creek; the Manitowoc River and its tributaries upstream to the first dam or lake in Manitowoc County, Sauk Creek and its tributaries upstream to the first

dam or lake in Ozaukee County; the Milwaukee River upstream to the Grafton Dam in the village of Grafton and tributaries of the Milwaukee River upstream to the first dam or lake; the Menomonee River upstream to the Lepper Dam in the village of Menomonee Falls and tributaries of the Menomonee River upstream to the first dam or lake; the unnamed tributary (Willow Creek) to the Sheboygan River, and the Pike River and its tributaries in Kenosha and Racine counties:

Daily bag limit: 5 trout and salmon in total

Minimum length limit: 10"

Hours, seasons, gear restrictions: From Sept 15 to the first Saturday of the following May, you may not use hooks that have a gap size larger than one-half inch from point to shank.

Special regulations: The following special regulations apply to the following waters:

- Night fishing by any method: From Sept. 15 to Dec. 31, fishing by any method is prohibited from one-half hour after sunset to one-half hour before sunrise.
- Night fishing by hook and line: From Jan. 7 to the first Saturday in May, hook and line fishing is prohibited from one-half hour after sunset to one-half hour before sunrise.
- The section of the Peshtigo River upstream from the railroad bridge at the NE ¼ of the NE ¼ section 30, township 30 north, range 23 east (Peshtigo City Garage) to the first dam.
- The section of the Oconto River from the upstream side of Hwy 41 upstream to the first dam and the section of the Little River upstream from the Oconto River to Hwy 141.
- All Lake Michigan tributaries and all other Green Bay tributary streams, rivers and ditches upstream to their first dam or lake, except this DOES NOT apply to the Menominee River (Marinette Co.).

Season: There is a year-round season on Lake Michigan tributaries and the following stream sections of Green Bay tributaries:

- Duck Creek (Brown Co.), from the first dam above the Pamperin Park footbridge (Village of Howard) downstream to Green Bay;
- Suamico River (Brown Co.), from the CTH "HS" bridge downstream to Green Bay;
- East River (Brown Co.), from the CTH "XX" (Hoffman Road) bridge downstream to the Fox River;
- Little Suamico River (Oconto Co.), from the CTH "J" bridge downstream to Green Bay;
- Pensaukee River (Oconto Co.), from the CTH "J" bridge downstream to Green Bay;
- Oconto River (Oconto Co.), from the Stiles dam downstream to Green Bay;
- Little River (Oconto Co.), from the Highway 141 bridge downstream to the Oconto River;
- Little River (Marinette Co.), from the Rader Road bridge downstream to Green Bay; and
- Peshtigo River (Marinette Co.), from the Peshtigo dam downstream to Green Bay.

NOTE: There is no hook and line fishing allowed for any species on all other Green Bay and Fox River tributaries and ditches, including tributaries to the above streams, from their mouth up to the first dam or lake from after the first Sunday in March to before the first

Saturday in May. The open season on other Green Bay tributaries is from the first Saturday in May to the first Sunday in March, excluding the Menominee River.

Open season for Lake trout: There is a year-round season on Lake Michigan tributaries and the following stream sections of Green Bay tributaries:

- Duck Creek (Brown Co.) from the first dam above the Pamperin Park footbridge (Village of Howard) downstream to Green Bay; Green Bay tributaries: -Duck Creek (Brown Co.), from the first dam;
- Suamico River (Brown Co.), from the CTH "HS" bridge downstream to Green Bay;
- East River (Brown Co.), from the CTH "XX" (Hoffman Road) bridge downstream to the Fox River;
- Little Suamico River (Oconto Co.), from the CTH "J" bridge downstream to Green Bay;
- Pensaukee River (Oconto Co.), from the CTH "J" bridge downstream to Green Bay;
- Oconto River (Oconto Co.), from the Stiles dam downstream to Green Bay;
- Little River (Oconto Co.), from the Highway 141 bridge downstream to the Oconto River;
- Little River (Marinette Co.), from the Rader Road bridge downstream to Green Bay; and
- Peshtigo River (Marinette Co.), from the Peshtigo dam downstream to Green Bay.

The season for Lake trout on all other Green Bay tributaries and ditches including tributaries to the sections of above named streams is May 6, 2023 to March 3, 2024.

Lake Superior Streams

(all streams are located in Ashland, Bayfield, Douglas and Iron counties and shown as black on the maps)



The regulations for Lake Superior vary according to the life histories of river resident and lake-run migratory trout and salmon.

Many streams from their mouths at Lake Superior upstream to the first impassable permanent barrier have early and extended fishing seasons in the spring and fall, which are listed with their regulations in the Specific Waters Listed by County section. Any stream not listed in that section has the following general regulation:

Open season: May 6, 2023 at 5 a.m. to Sept. 30, 2023

Daily bag limit: 5 trout and salmon in total, only 2 of which may be Brown trout over 15" and only 1 of which may be a Rainbow trout

Minimum length limit: Brook trout 8", Brown trout 10", salmon 12" and Rainbow trout 26".

Impassable permanent barriers on Lake Superior streams include, but are not limited to, the following:

County	Water	Impassable Barrier Sect, T'ship, Range
Ashland	Bad River	Copper Falls S17, T45N, R2W
	Tyler Forks	Copper Falls S17, T45N, R2W
Bayfield	Iron River	Sea lamprey barrier S10, T49N, R9W
	White River	Hydroelectric dam S6, T46N, R4W
	Siskiwit River	Falls S35, T51N, R6W
Douglas	Amnicon River	Amnicon Falls S29, T48N, R12W
	Balsam Creek	Falls S29, T46N, R15W
	Black River	Pattison Falls S21, T47N, R14W
	Copper Creek	Falls S15, T47N, R14W
Iron	Montreal River	Hydroelectric dam S7, T47N, R1E
	Potato River	Falls S18, T46N, R1W

Abbreviations And Explanations:

- **STH** = state highway; **CTH** = county highway; **USH** = United States highway
- **Artificial Lure** means a spoon, spinner, plug or other fish bait made of hair, feathers, cork, wood, rubber, metal, plastic or other synthetic materials, or combinations of these materials. An "artificial lure" may not include natural or organic foodstuffs such as corn, marshmallows, dough, cheese, meat, living or dead organisms or parts thereof, except hair, feathers, cork, wood and rubber.
- **Urban Waters** are lakes and ponds which are intensively and cooperatively managed with a municipality. They are posted with signs and have a large part of the shoreline open for public access. Search "urban fishing" at dnr.wi.gov for more information.
- Some waters have seasons, length and bag limits for trout, but are not designated trout streams.
- **Native American Reservations:** Access to streams or lakes on Native American reservations must be with the permission of the landowner or from lands open to the public, such as public roads. Entering or fishing from tribal lands could subject you to tribal or federal trespass laws.
- **Base Regulation:** The base regulation is the regulation category given to all waters in a county that are not specially regulated - generally identified as "all waters not listed."

Specific Waters Listed By County

Trout Regulations By Category

Category: Green	Daily bag limit and length limit: 5 trout in total of any length
Category: Yellow	Daily bag limit and length limit: 3 trout in total over 8"
Category: Red	Special regulations: length, bag and possession limits vary by specific water
Category: Black	Lake Superior (Category LS) or Lake Michigan (Category LM) tributaries – see Lake Michigan or Lake Superior sections pages 2-3

ADAMS

ALL WATERS NOT LISTED— Yellow

FAIRBANKS CREEK— Red

Daily bag and length limit: 2 trout over 12"

FORDHAM CREEK— Red

Daily bag and length limit: 3 in total: Brown and Rainbow trout over 12"; Brook trout over 8"

LAWRENCE CREEK— Green

NEENAH CREEK— Red

Daily bag and length limit: 2 trout over 12"

Gear restrictions: Only artificial lures may be used

ASHLAND

ALL INLAND WATERS NOT LISTED— Green

MARENGO RIVER—Upstream from STH 13 to County Line Rd — Red

Daily bag limit and length limit: 3 in total: Brown and Rainbow trout over 12"; Brook trout over 8"

ALL LAKE SUPERIOR (LS) STREAMS— See the regulations under Lake Superior streams on page 3.

ALL LAKE SUPERIOR (LS) STREAMS NOT LISTED— See the regulations under Lake Superior streams on page 3

BAD RIVER (LS)—Downstream from Devil's Gate

Open season: March 25 to Nov. 15

BRUNSWELLER RIVER (LS)—Downstream from STH 13

Open season: March 25 to Nov. 15

MARENGO RIVER (LS)—Downstream from STH 13

Open season: March 25 to Nov. 15

POTATO RIVER (LS)

Open season: March 25 to Nov. 15

WHITE RIVER (LS)—Downstream from White River Dam

Open season: March 25 to Nov. 15

BARRON

ALL WATERS NOT LISTED— Green

BEAVER DAM LAKE— Red

Daily bag limit and length limit: 1 trout over 18"

Open season: May 6 at 5 a.m. to March 3, 2024

BRILL RIVER— Red

Daily bag limit and length limit: 2 trout over 12"

BAYFIELD

ALL INLAND WATERS NOT LISTED— Green

CAP CREEK— Red

Daily bag limit: all trout caught must be immediately released

Gear restriction: only artificial lures may be used

IRON RIVER—Upstream from the sea lamprey barrier at the former site of the Orienta Dam— Yellow

LONG LAKE BRANCH OF WHITE RIVER—Downstream from Taylor Lane to White River — Red

Daily bag and length limit: 1 trout over 18"

NAMEKAGON RIVER— Red

Daily bag and length limit: 1 trout over 14"

Gear restriction: only artificial lures may be used

SCHULTZ SPRINGS— Red

Daily bag limit: all trout caught must be immediately released

Gear restriction: only artificial lures may be used

WHITE RIVER—Upstream from Pikes Bridge— Yellow

WHITE RIVER—Downstream from Pikes Bridge to the White River Dam— Red

Daily bag and length limit: 1 trout over 18"

WHITE RIVER (EAST FORK)— Yellow

WHITE RIVER (SOUTH FORK and SPRINGS)— Yellow

WHITE RIVER (UNNAMED TRIBUTARIES)— Yellow

WHITE RIVER (WEST FORK)— Yellow

ALL LAKE SUPERIOR (LS) STREAMS NOT LISTED— see the regulations under Lake Superior streams on page 3

ALL LAKE SUPERIOR (LS) STREAMS— see the regulations under Lake Superior streams on page 3

BARK RIVER AND ALL ITS TRIBUTARIES (LS)

Open season: May 6 at 5 a.m. to Nov. 15

Daily bag limit: 5 trout and salmon in total, only 2 of which may be Brown trout over 15" and only 1 of which may be a Rainbow trout and all Brook trout must be immediately released

Length limit: Brown trout 10", salmon 12" and Rainbow trout 26"

BONO CREEK (LS)

Open season: May 6 at 5 a.m. to Nov. 15

BOYD CREEK (LS)

Open season: May 6 at 5 a.m. to Nov. 15

CRANBERRY RIVER (LS)— Downstream from Lenawee Road (S28, T50N, R7W)

Open season: March 25 to Nov. 15

FISH CREEK (NORTH FORK) (LS)—Downstream from Pine Creek (S13, T47N, R6W)

Open season: March 25 to Nov. 15

FLAG RIVER (LS)—Downstream from East Fork of Flag River

Open season: March 25 to Nov. 15

IRON RIVER AND ALL ITS TRIBUTARIES (LS)—Downstream from the sea lamprey barrier at the former site of the Orienta Dam

Open season: March 25 to Nov. 15

ONION RIVER (LS)—Downstream from Lake Superior district Power Company power line (S6, T49N, R4W)

Open season: May 6 at 5 a.m. to Nov. 15

PIKES CREEK (LS)—Downstream from the Red Dam

Open season: May 6 at 5 a.m. to Nov. 15

PINE CREEK (LS)—Downstream from junction with Little Pine Creek (S11, T47N, R6W)

Open season: May 6 at 5 a.m. to Nov. 15

SIoux RIVER, LITTLE (LS)—see the regulations under Lake Superior streams on page 3

SIoux RIVER (LS)—Downstream from the Big Rock Falls Dam (S19, T49N, R4W)

Open season: March 25 to Nov. 15

SISKIWIT RIVER (LS)—Downstream from second bridge from mouth (S35, T51N, R6W)

Open season: March 25 to Nov. 15

WHITTLESEY CREEK (LS)—Downstream from Town Hall Road

Open season: May 6 at 5 a.m. to Nov. 15

Daily bag limit: 5 trout and salmon in total, only 2 of which may be Brown trout over 15" and only 1 of which may be a Rainbow trout and all Brook trout must be immediately released

Length limit: Brown trout 10", salmon 12" and Rainbow trout 26"

BROWN

ALL WATERS— Yellow—For streams flowing into Green Bay see regulations under Lake Michigan streams on page 2

BUFFALO

ALL WATERS NOT LISTED— Green

BEAR CREEK and all its tributaries (Newton Valley Creek and 5-9)— Red

Daily bag limit and length limit: 3 in total: Brown and Rainbow trout over 12"; Brook trout over 8"

BURNETT

ALL WATERS— Green

CALUMET

ALL WATERS— Green

CHIPPEWA

ALL WATERS NOT LISTED— Green

NOTE: The only lakes where trout and salmon may be fished after Oct. 15 are Henneman, Bradley and Dark (S10, T32N, R9W)

DUNCAN CREEK—Downstream of Bloomer Dam to Cty Hwy B— Red

Daily bag limit and length limit: 3 in total: Brown and Rainbow trout over 12"; Brook trout over 8"

ELK CREEK and all its tributaries (Big Elk Creek, 35-12, 5-16, 17-11, 4-2, 19-16)— Red

Daily bag limit and length limit: 5 fish under 12"

McCANN CREEK— Red

Daily bag limit and length limit: 5 in total: Brown and Rainbow trout no minimum length limit; Brook trout under 9"

CLARK

ALL WATERS— Green

COLUMBIA

ALL WATERS NOT LISTED— Yellow

DURWARD'S GLENN CREEK (PRENTICE CREEK) — Red

Daily bag limit and length limit: 5 in total: Brown and Rainbow trout no minimum length limit; Brook trout under 9"

LODI (SPRING) CREEK—Downstream from CTH J— Red

Daily bag limit and length limit: 2 trout over 12"

Gear restriction: only artificial lures may be used

CRAWFORD

ALL WATERS NOT LISTED— Green

HALLS BRANCH— Red

Daily bag limit and length limit: 5 trout in total: all Brook trout caught must be immediately released; Brown trout and Rainbow trout no minimum length

HOOVER CREEK— Yellow

KNAPP CREEK— Red

Daily bag and length limit: 5 trout under 12"

PLUM CREEK— Red

Daily bag and length limit: 5 trout in total: all Brook trout caught must be immediately released; Brown trout and Rainbow trout no minimum length

PLUM RUN—below CTH U - Green

UNNAMED CREEK 36-14 (S36, T9N, R3W)— Yellow

DANE

ALL WATERS NOT LISTED— Yellow

BLACK EARTH CREEK—USH 14 (east side of Mazomanie) upstream to South Valley Rd- Red

Daily bag and length limit: 1 trout over 18"

MOUNT VERNON CREEK—CTH U downstream to STH 92— Red

Daily bag and length limit: 5 trout under 12"

DODGE

ALL WATERS— Yellow

DOOR

ALL WATERS— Yellow —For streams flowing into Lake Michigan and Green Bay see the regulations under Lake Michigan streams on page 2

DOUGLAS

ALL INLAND WATERS NOT LISTED— Green

ALL LAKE SUPERIOR (LS) STREAMS NOT LISTED—See the regulations under Lake Superior streams on page 3

ALL LAKE SUPERIOR (LS) STREAMS— See the regulations under Lake Superior streams on page 3

AMNICON RIVER (LS)—Downstream from Amnicon Falls

Open season: March 25 to Nov. 15

BLACK RIVER (LS)—Downstream from Big Manitou Falls

Open season: March 25 to Nov. 15

BRULE RIVER (LS)—Downstream from USH 2

Open season: March 25 to Nov. 15

Fishing is prohibited from ½ hour after sunset to ½ hour before sunrise from March 25 to May 6 and from Oct. 1 through Nov. 15.

BRULE RIVER (LS)—CTH S downstream to CTH B

Open season: May 6 at 5 a.m. to Sept. 30

Gear restriction: only artificial lures may be used

Daily bag limit: 3 trout and salmon in total, only 2 of which may be Brown trout, only 1 of which may be a Rainbow trout

Length limit: Brook trout 10" Brown trout 15", salmon 12", and Rainbow trout 26"

BRULE RIVER (LS)—Remainder not covered above—

Base regulation for Lake Superior streams on page 3

MIDDLE RIVER (LS)—Downstream from USH 2

Open season: March 25 to Nov. 15

NEMADJI RIVER (LS)—Downstream from Great Northern RR Bridge (S4, T47N, 14W)

Open season: March 25 to Nov. 15

POPLAR RIVER (LS)—

Open season: March 25 to Nov. 15

ST. LOUIS RIVER (LS)—Downstream from Wisconsin-Minnesota state line

Open season: March 25 to Nov. 15

DUNN

ALL WATERS NOT LISTED— Green

CADY CREEK— Yellow

EAU GALLE RIVER— Red

Daily bag limit and length limit: 3 in total: Brown and Rainbow trout over 12"; Brook trout over 8"

ELK CREEK— Upstream from Elk Creek Lake Dam (Big Elk Creek, 17-11, 2-8, 1-1) — Red

Daily bag limit and length limit: 5 trout under 12"

ELK CREEK— Downstream from Elk Creek Lake Dam and all tributaries— Red

Daily bag limit and length limit: 1 trout over 18"

ELK CREEK LAKE— Red

Daily bag limit and length limit: 5 trout under 12"

Season: May 6 at 5 a.m. to March 3, 2024

SAND CREEK—10th St downstream to Red Cedar River— Red

Daily bag limit and length limit: 1 trout over 18"

Gear restrictions: Only artificial lures may be used

EAU CLAIRE

ALL WATERS NOT LISTED— Green

NOTE: The only ponds where trout and salmon may be fished after Oct. 15 are Fall Creek and Fairchild ponds.

BEARS GRASS CREEK— Red

Daily bag limit and length limit: 5 in total: Brown and Rainbow trout no minimum length"; Brook trout under 9"

ELK CREEK— Red

Daily bag limit and length limit: 5 trout under 12"

OTTER CREEK— Red

Daily bag limit and length limit: 3 in total: Brown and Rainbow trout over 12"; Brook trout over 8"

FLORENCE

ALL WATERS NOT LISTED— Yellow

BRULE RIVER—Upstream from USH 2— Red

Daily bag limit and length limit: 5 in total: Brown trout over 12"; Brook trout over 8"

Season: April 29 to Sept. 30

BRULE RIVER—Downstream from USH 2— Red

Daily bag limit and length limit: 5 trout over 7"

Season: April 29 to Sept. 30

KEYES LAKE— Red

Daily bag limit and length limit: 2 trout over 12"

Season: May 6 at 5 a.m. to March 3, 2024

PEMEBONWON RIVER, NORTH BRANCH— Green

POPPLE RIVER—Downstream from STH 139

Season: May 6 to Oct. 15 - Yellow

WOODS CREEK— Downstream from STH 101— Red

Daily bag limit and length limit: 2 trout over 12"

FOND DU LAC

ALL WATERS NOT LISTED— Yellow

SILVER CREEK— Green

FOREST

ALL WATERS NOT LISTED— Yellow

BRULE CREEK— Red

Daily bag limit and length limit: 3 trout over 10"

BRULE RIVER— Red

Daily bag limit and length limit: 5 in total: Brown trout over 12"; Brook trout over 8"

Season: April 29 to Sept. 30

BRULE SPRINGS— Red

Daily bag limit and length limit: 3 trout over 10"

EAST BRANCH LILY RIVER—Green

ELVOY CREEK— Red

Daily bag limit and length limit: 3 trout over 10"

ELVOY SPRINGS (S20, T41N, R13E)— Red

Daily bag limit and length limit: 3 trout over 10"

FOURMILE CREEK—Green

LAKE LUCERNE— Red

Daily bag limit and length limit: 1 Lake trout over 30", other trout — Yellow

Season: Lake trout—May 6 at 5 a.m. to Sept. 30. Other trout— May 6 at 5 a.m. to March 3, 2024

LILY RIVER—Green

PESHTIGO RIVER— Downstream from STH 8

Season: May 6 to Oct. 15— Yellow

RAT RIVER

Season: May 6 to Oct. 15— Yellow

UNNAMED CREEK 11-8— Green

UNNAMED CREEK 12-9— Green

UNNAMED CREEK 13-15— Green

GRANT

ALL WATERS NOT LISTED— Yellow

BIG GREEN RIVER—Upstream from STH 133— Red

Daily bag limit and length limit: 5 trout under 12"

BIG SPRING BRANCH—Upstream from Pine Tree Road— Red

Daily bag limit and length limit: 5 trout in total: all Brook trout caught must be immediately released; Brown trout and Rainbow trout no minimum length

Gear restriction: only artificial lures may be used

BLUE RIVER—Biba Road Upstream to Snow bottom Road— Red

Daily bag limit and length limit: 2 trout over 12"

BLUE RIVER—Upstream from Snow Bottom Road— Red

Daily bag limit: all trout caught must be immediately released

Gear restriction: only artificial lures may be used

BORAH CREEK— Red

Daily bag limit and length limit: 5 trout under 12"

BRONSON CREEK —downstream from Vavricka Road— Red

Daily bag limit: all trout caught must be immediately released

Gear restriction: only artificial lures may be used

CASTLE ROCK CREEK—Upstream from Witek Road to third CTH Q Bridge (S30 SESW, T7N, R1W)— Red

Daily bag limit and length limit: 2 trout over 12"

CASTLE ROCK CREEK and SPRING— from third CTH Q bridge (S30 SESW, T7N, R1W) upstream to Church Road— Red

Daily bag limit: all trout caught must be immediately released

Gear restriction: only artificial lures may be used

CROOKED CREEK— Red

Daily bag limit and length limit: 5 trout under 12

DOC SMITH BRANCH—From Castle Rock Creek upstream to 0.5 mile upstream from Everson Road— Red

Daily bag limit: all trout caught must be immediately released

Gear restriction: only artificial lures may be used

GRANT RIVER—CTH A upstream to CTH K— Red

Daily bag limit: all trout caught must be immediately released

LITTLE GRANT RIVER—Govier Rd upstream to Milner Rd— Red

Daily bag limit and length limit: 5 trout under 12"

LITTLE PLATTE RIVER—From Waterfall Road upstream to STH 80— Red

Daily bag limit: all trout caught must be immediately released

Gear restriction: only artificial lures may be used

MILLVILLE CREEK— Red

Daily bag limit and length limit: 2 trout over 12"

GREEN

ALL WATERS— Yellow

GREEN LAKE

ALL WATERS NOT LISTED— Green

GREEN LAKE — Red

Daily bag limit and length limit: 2 Lake trout over 17", 3 other trout over 14"

Season: Lake trout —Jan. 7 to Sept. 30; Other trout — May 6 at 5 a.m. to March 3, 2024

IOWA

ALL WATERS NOT LISTED— Yellow

BAKER CREEK— Red

Daily bag limit and length limit: 5 trout in total: all Brook trout caught must be immediately released; Brown trout and Rainbow trout no minimum length

Gear restriction: only artificial lures may be used

BIG SPRING BRANCH— Red

Daily bag limit and length limit: 5 trout in total: all Brook trout caught must be immediately released; Brown trout and Rainbow trout no minimum length

Gear restriction: only artificial lures may be used

BLUERIVER—upstream to 0.5 mile upstream of Blue River Road— Red

Daily bag limit: all trout caught must be immediately released

Gear restriction: only artificial lures may be used

CAVE HOLLOW CREEK— Red

Daily bag limit and length limit: 5 trout in total: all Brook trout caught must be immediately released; Brown trout and Rainbow trout no minimum length

Gear restriction: only artificial lures may be used

GORDON CREEK—STH 78 upstream to Spring Creek Road— Red

Daily bag limit and length limit: 5 trout under 12"

HARKER CREEK—upstream of the confluence with Flint Creek— Red

Daily bag limit and length limit: 5 trout in total: all Brook trout caught must be immediately released; Brown trout and Rainbow trout no minimum length

Gear restriction: only artificial lures may be used

LOWERY CREEK— upstream from State Highway 23— Red

Daily bag limit and length limit: 5 trout in total: all Brook trout caught must be immediately released; Brown trout and Rainbow trout no minimum length

Gear restriction: only artificial lures may be used

NARVESON CREEK — downstream from Blackhawk Lake to Otter Creek— Red

Daily bag limit: all trout caught must be immediately released

OTTER CREEK—CTH II Upstream to Plank Road— Red

Daily bag limit: all trout caught must be immediately released

OTTER CREEK—Upstream from Cave Hollow Road— Red

Daily bag limit and length limit: 5 trout in total: all Brook trout caught must be immediately released; Brown trout and Rainbow trout no minimum length

Gear restriction: only artificial lures may be used

POMPEY PILLAR CREEK—Upstream from CTH I— Red

Daily bag limit and length limit: 5 trout in total: all Brook trout caught must be immediately released; Brown trout and Rainbow trout no minimum length

Gear restriction: only artificial lures may be used

TROUT CREEK—Upstream from Dry Dam— Red

Daily bag limit and length limit: 5 trout in total: all Brook trout caught must be immediately released; Brown trout and Rainbow trout no minimum length

Gear restriction: only artificial lures may be used

IRON

ALL INLAND WATERS NOT LISTED— Green

ALL LAKE SUPERIOR (LS) STREAMS NOT LISTED—See the regulations under Lake Superior streams on page 3

ALL LAKE SUPERIOR (LS) STREAMS—See the regulations under Lake Superior streams on page 3

GRAVEYARD CREEK AND ITS TRIBUTARIES (LS)— Downstream from USH 2

Open season: March 25 to Nov. 15

MONTREAL RIVER (LS)—Downstream from Superior Falls

Open season: Continuous open season

Daily bag limit and length limit: 5 trout or salmon in total over 10"

MONTREAL RIVER—Upstream from Superior Falls along the Wisconsin/Michigan boundary

Open season: April 29 - Sept. 30

Daily bag limit and length limit: 5 trout over 7"

ORONTO CREEK AND ITS TRIBUTARIES (LS)

Open season: March 25 to Nov. 15

PARKER CREEK (LS)

Open season: March 25 to Nov. 15

JACKSON

ALL WATERS NOT LISTED— Green

LAKE WAZEE— Red

Daily bag limit and length limit: 2 trout over 12"

Season: May 6 at 5 a.m. to March 3, 2024

JEFFERSON

ALL WATERS— Yellow

JUNEAU

ALL WATERS— Yellow

KENOSHA

ALL WATERS— Yellow —For streams flowing into Lake Michigan, see the regulations under Lake Michigan streams on page 2

KEWAUNEE

ALL WATERS— Yellow —For streams flowing into Lake Michigan, see the regulations under Lake Michigan streams on page 2

LA GROSSE

ALL WATERS NOT LISTED— Green

BOHEMIAN VALLEY CREEK— Red

Daily bag limit and length limit: 10 trout in total, no minimum length

GARBERS COULEE— Red

Daily bag limit and length limit: 5 trout in total, Brown trout and Rainbow trout no minimum length, all Brook trout caught must be immediately released

MORMON COULEE CREEK— Red

Daily bag limit and length limit: 10 trout in total, no minimum length

PAMMEL CREEK— Red

Daily bag limit: all trout caught must be immediately released

LAFAYETTE

ALL WATERS NOT LISTED— Yellow

STEINER CREEK— Red

Daily bag limit: all trout caught must be immediately released

Gear restriction: only artificial lures may be used

LANGLADE

ALL WATERS NOT LISTED— Green

NOTE: The only lakes in Langlade County where trout and salmon may be fished after Oct. 15 are: Crooked, Florence, Goto (Lake trout season is from the first Saturday in January through Sept. 30th), Jack, Moose, Pence, Remington (kids <16 and certain disabled adults only), Rogers, and Townline (S6, T33N, R10E)

BLUE SPRINGS— Red

Daily bag limit and length limit: 3 in total: Brown and Rainbow trout over 12"; Brook trout over 8"

CLUBHOUSE SPRING POND— Yellow

DEMLOW LAKES (SPRINGS; UPPER and LOWER)— Yellow

DREW CREEK— Yellow

EAU CLAIRE RIVER (EAST BRANCH)—Blue Bell Road downstream to River Road— Red

Daily bag limit and length limit: 5 in total: No fish may be kept between 10"-16" and 1 fish over 16" may be kept

ELTON SPRING POND— Yellow

GARSKI FLOWAGE— Yellow

GOTO LAKE— Red

Daily bag limit and length limit: 2 Lake trout over 17"; 5 other trout of any size— Green

Season: Lake trout - Jan. 7, 2023 through Sept. 30, 2023; Other trout - May 6, 2023 at 5 a.m. through March 3, 2024

HATTON SPRINGS— Yellow

HOGLEE SPRINGS (No. 1 and 2)— Yellow

HOGLOT SPRINGS— Yellow

HUNTING RIVER—Downstream from Fitzgerald Dam Road— Red

Daily bag limit and length limit: 3 in total: Brown and Rainbow trout over 12"; Brook trout over 8"

KARBERGERS SPRINGS— Yellow

MAXWELL SPRING— Yellow

MAYKING CREEK AND FLOWAGE— Yellow

MCCASLIN SPRING— Yellow

MCCASLIN Brook— Yellow

MCGEE LAKE— Red

Daily bag limit and length limit: 2 trout over 12"

Gear restriction: only artificial lures may be used

MOOSE LAKE— Yellow

MOOSE SPRINGS— Yellow

NIXON SPRINGS— Yellow

OCONTO RIVER (SOUTH BRANCH)— Yellow

PLOVER RIVER— Red

Daily bag limit and length limit: 3 in total: Brown and Rainbow trout over 12"; Brook trout over 8"

PRAIRIE RIVER— Red

Daily bag limit and length limit: 3 in total: Brown and Rainbow trout over 12"; Brook trout over 8"

PROSPECT CREEK— Yellow

SAUL SPRING— Yellow





SPRING Brook— Red

Daily bag limit and length limit: 5 in total: Brown and Rainbow trout no minimum length; Brook trout under 9"

Regulations are continued on page 25

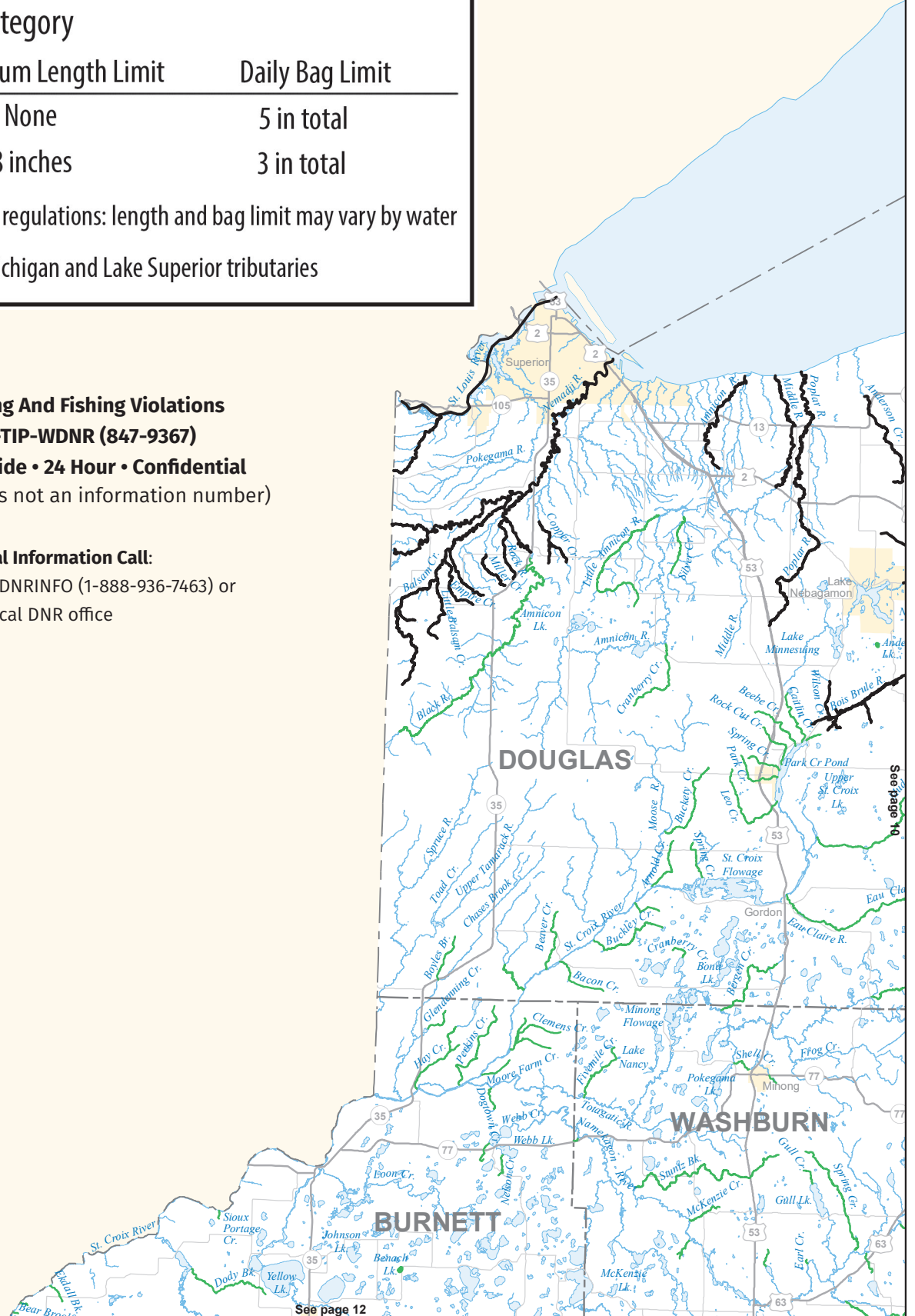
TROUT REGULATIONS KEY

Regulations Category

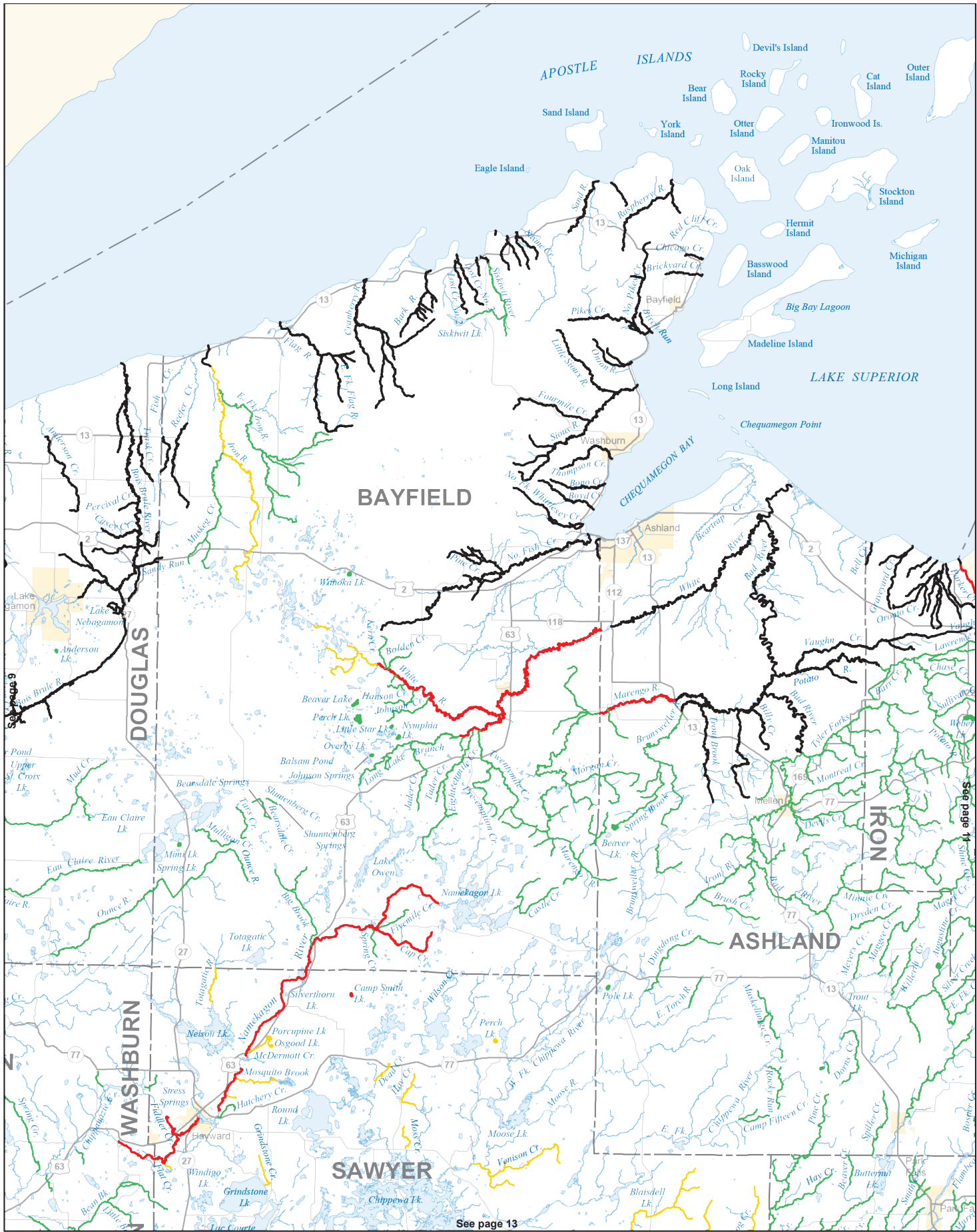
Color	Minimum Length Limit	Daily Bag Limit
	None	5 in total
	8 inches	3 in total
	Special regulations: length and bag limit may vary by water	
	Lake Michigan and Lake Superior tributaries	

Report Hunting And Fishing Violations
Call 1-800-TIP-WDNR (847-9367)
Toll Free Statewide • 24 Hour • Confidential
 (Please note: This is not an information number)

General Information Call:
 toll free 1-888-WDNRINFO (1-888-936-7463) or
 local DNR office

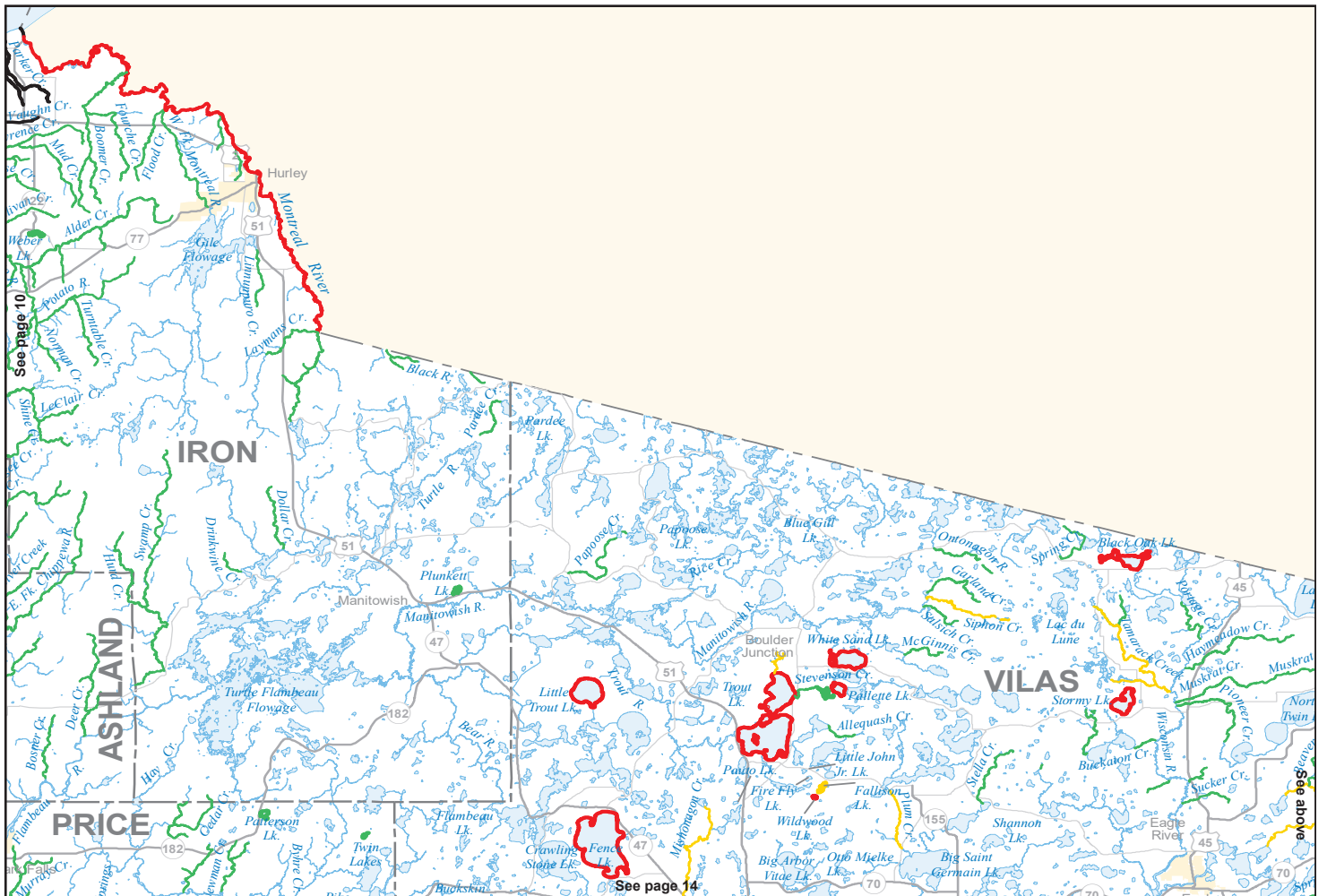
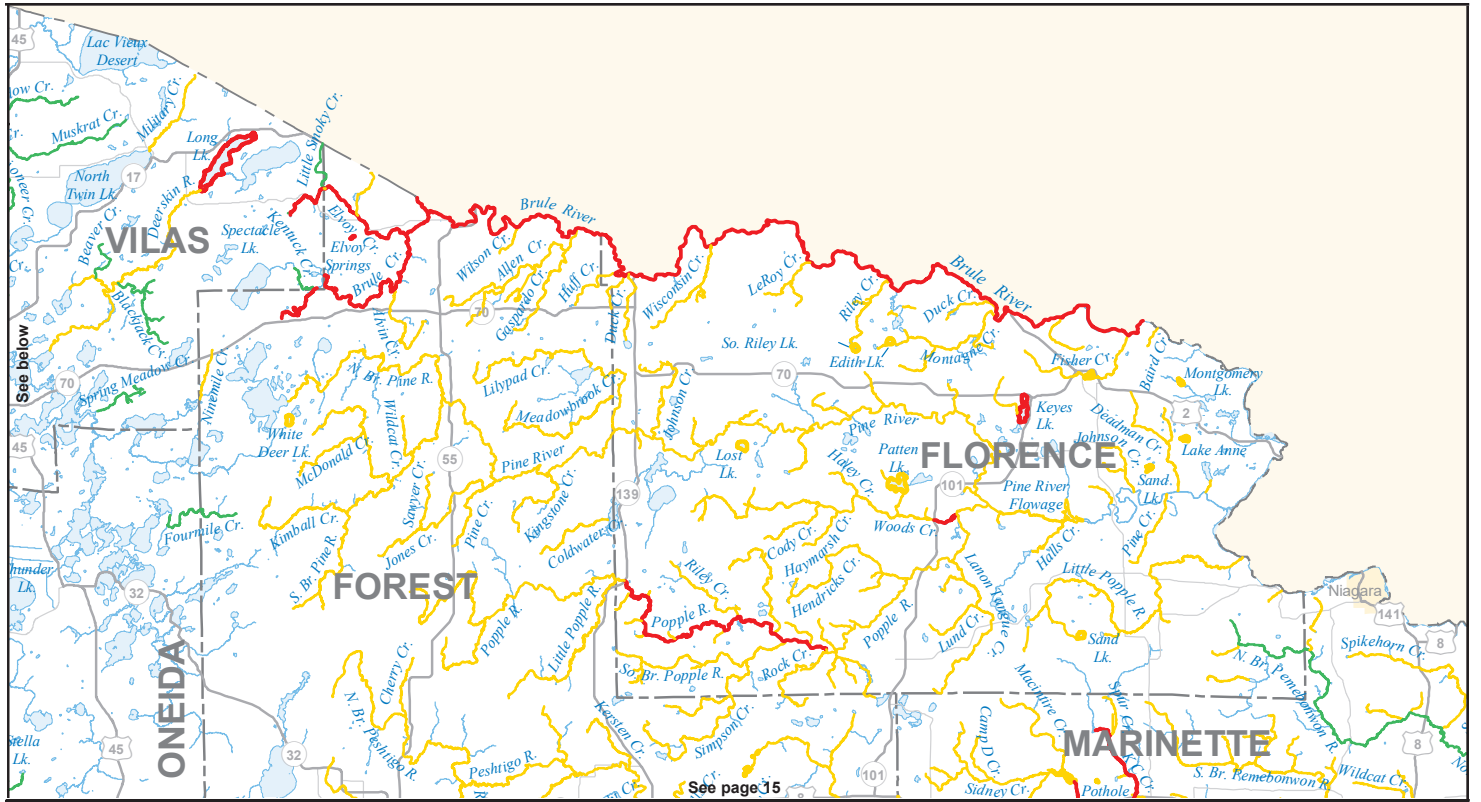


PLEASE NOTE: Maps cannot be used to determine the exact regulations or boundaries between waters. You should always follow the regulations printed in this guide or posted on site.

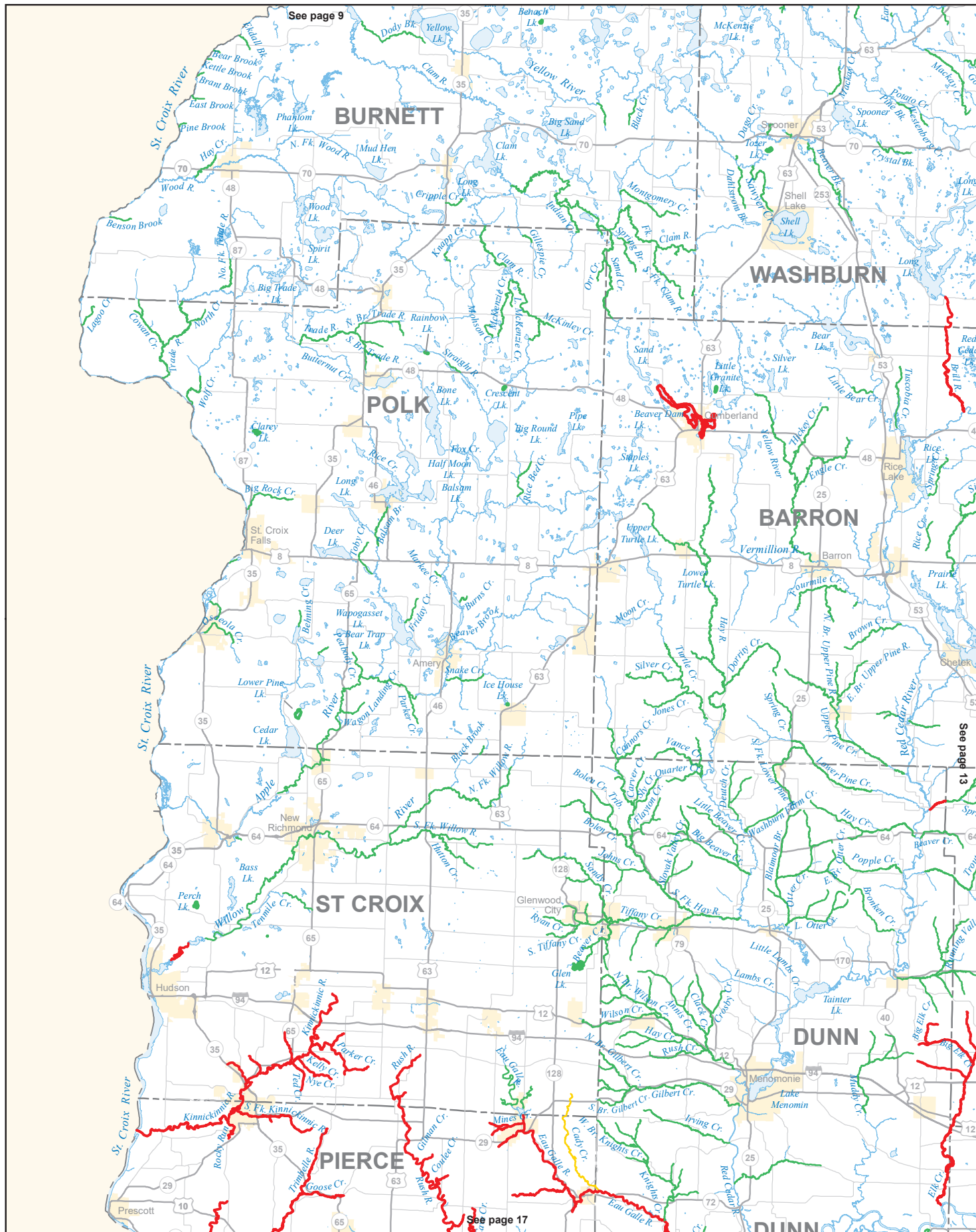


See page 13

PLEASE NOTE: Maps cannot be used to determine the exact regulations or boundaries between waters. You should always follow the regulations printed in this guide or posted on site.



PLEASE NOTE: Maps cannot be used to determine the exact regulations or boundaries between waters. You should always follow the regulations printed in this guide or posted on site.

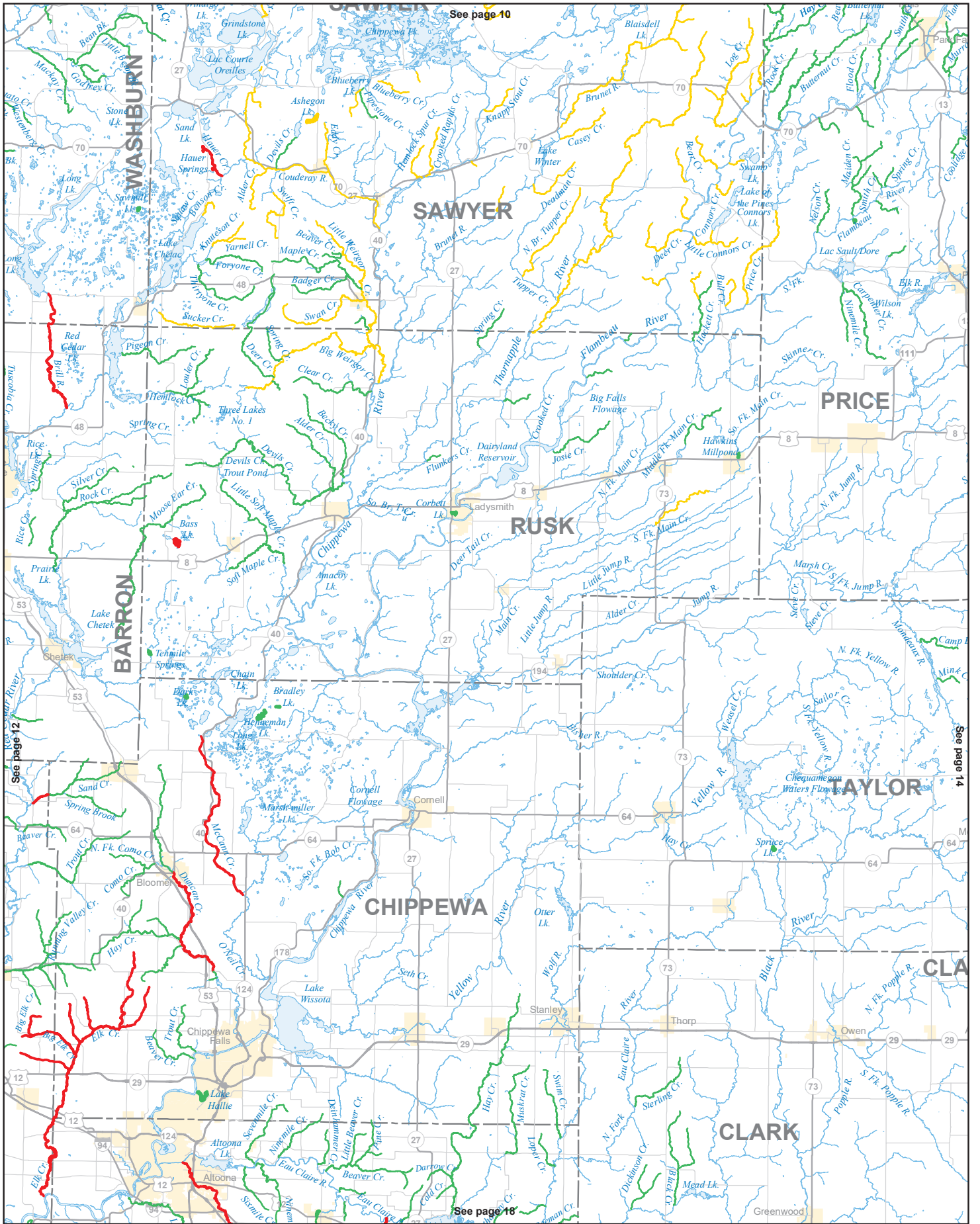


See page 9

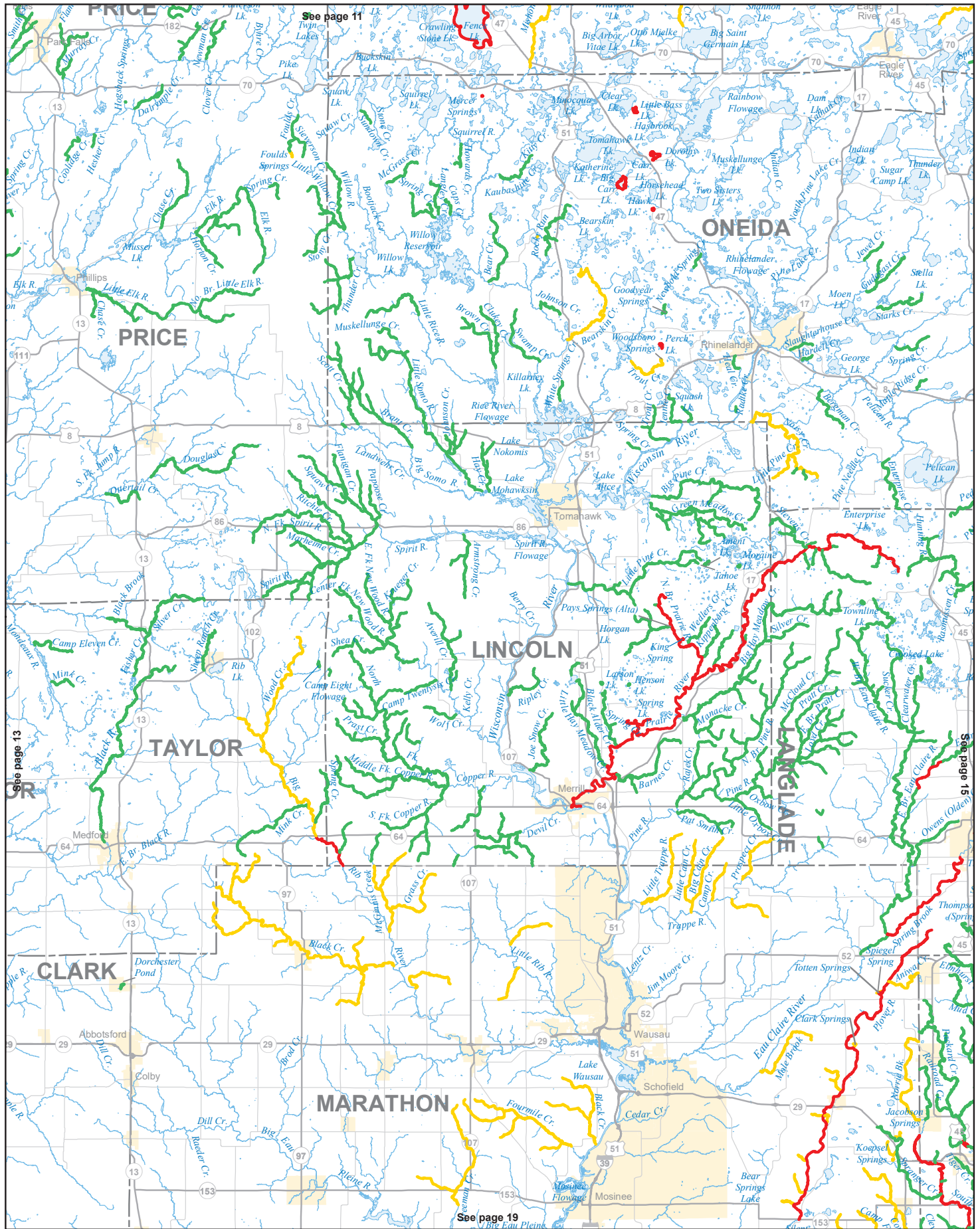
See page 13

See page 17

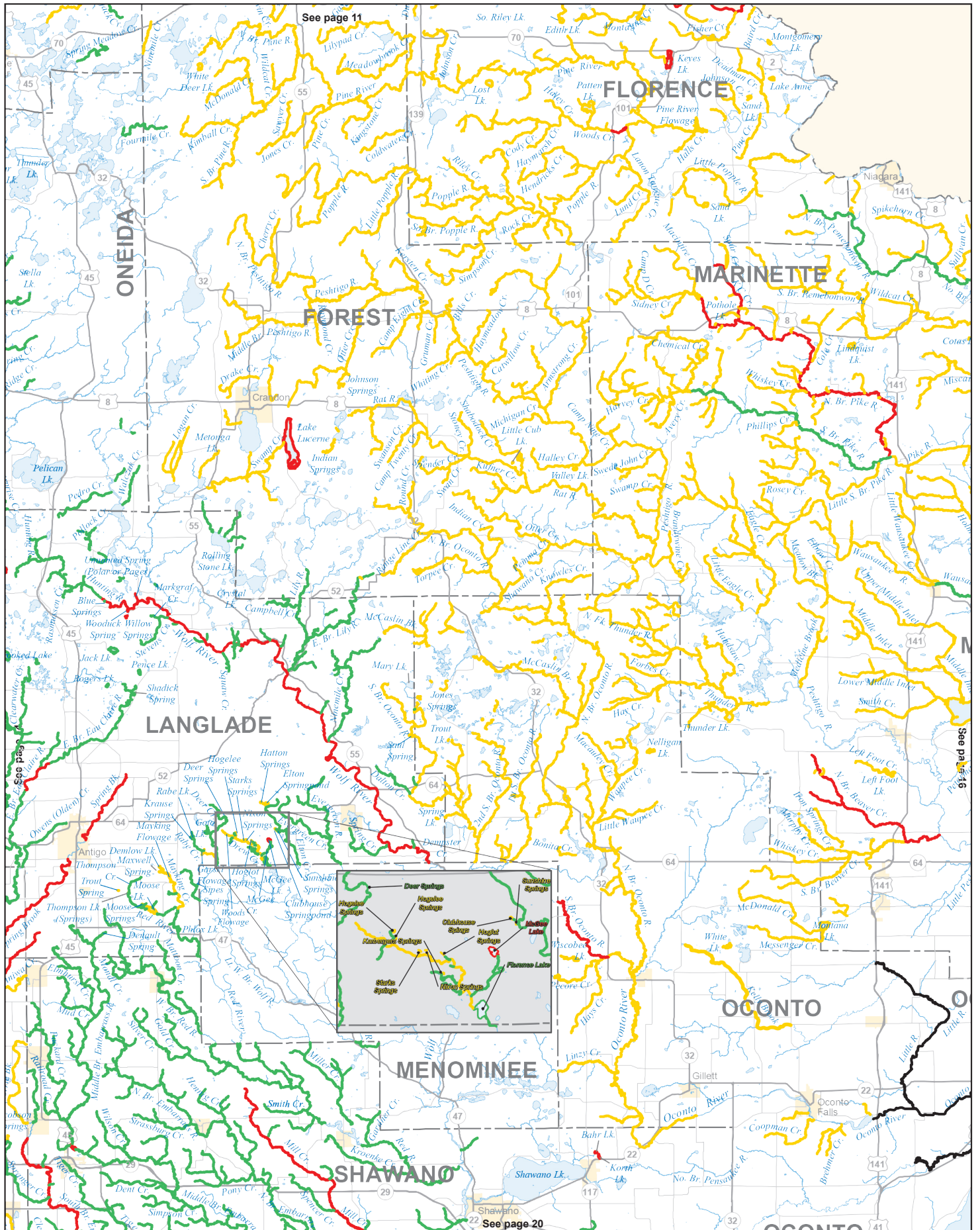
PLEASE NOTE: Maps cannot be used to determine the exact regulations or boundaries between waters. You should always follow the regulations printed in this guide or posted on site.



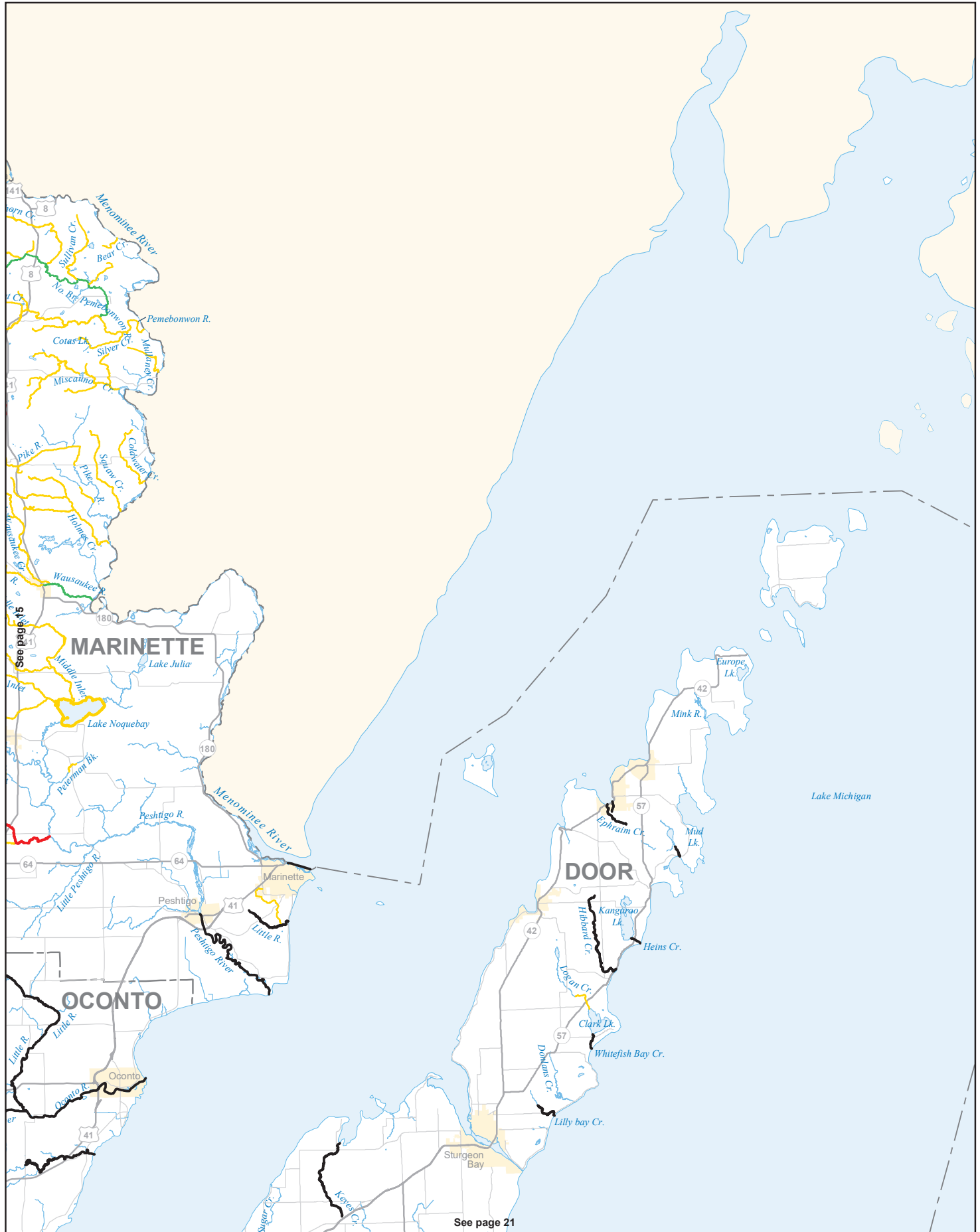
PLEASE NOTE: Maps cannot be used to determine the exact regulations or boundaries between waters. You should always follow the regulations printed in this guide or posted on site.



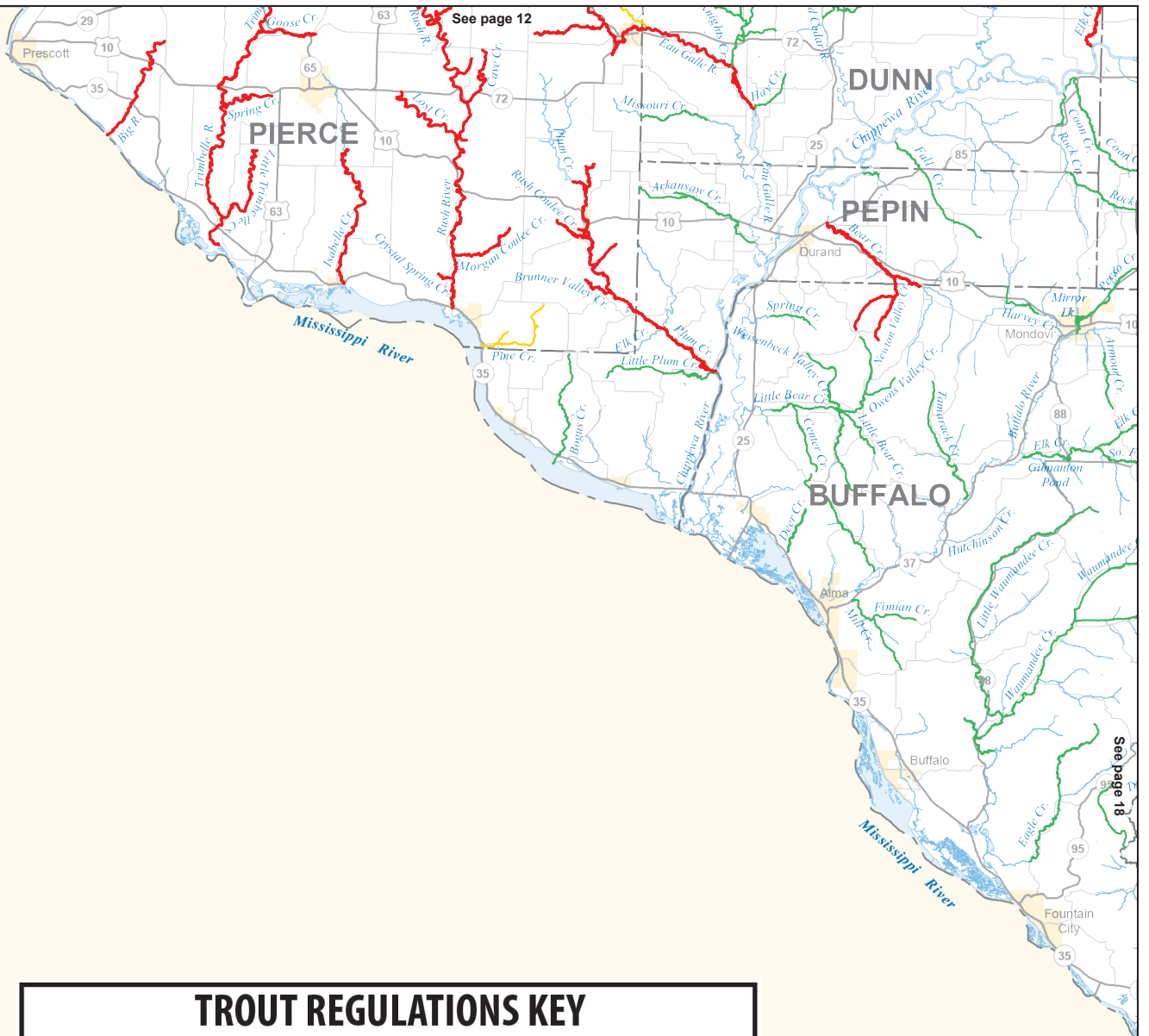
PLEASE NOTE: Maps cannot be used to determine the exact regulations or boundaries between waters. You should always follow the regulations printed in this guide or posted on site.



PLEASE NOTE: Maps cannot be used to determine the exact regulations or boundaries between waters. You should always follow the regulations printed in this guide or posted on site.

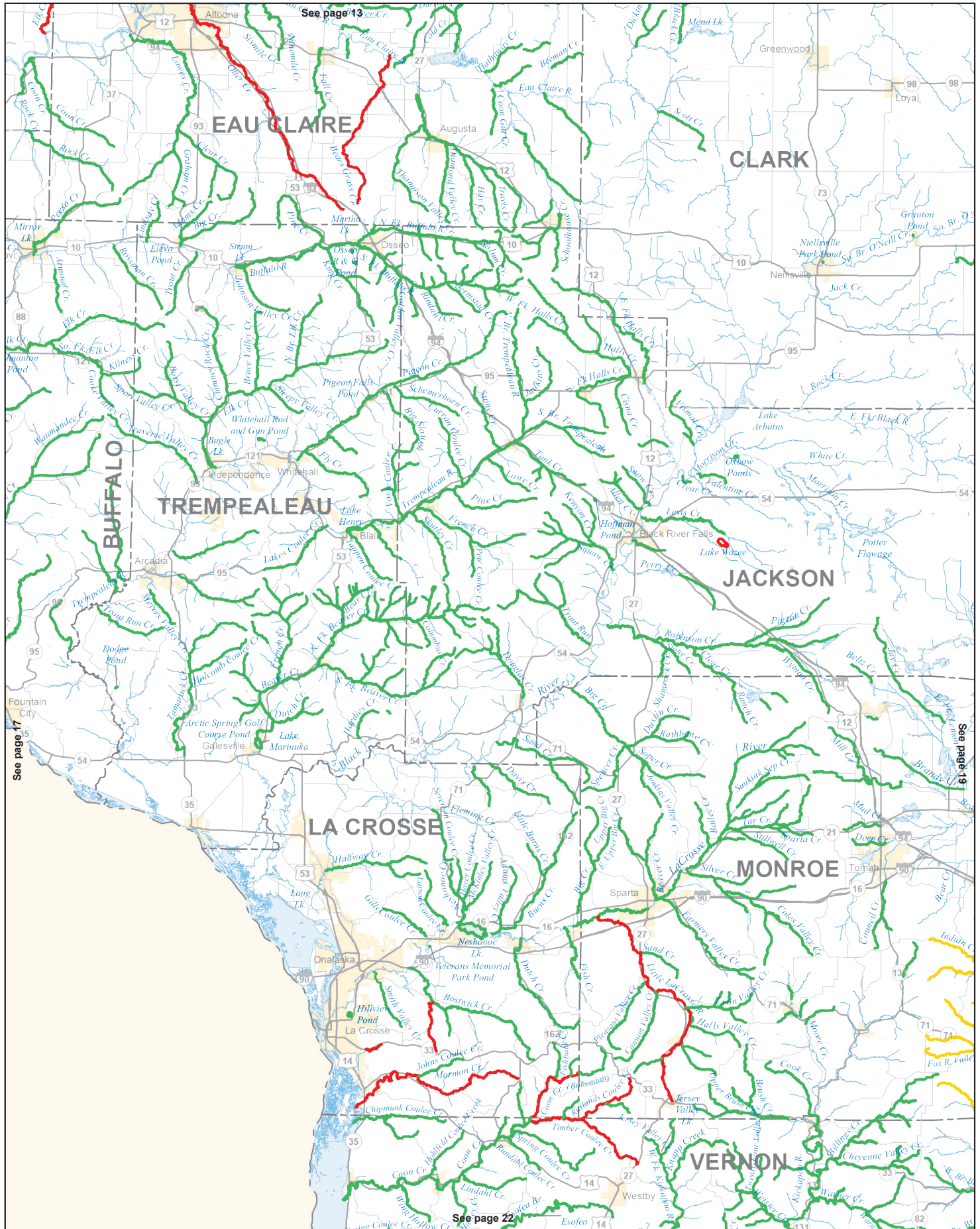


PLEASE NOTE: Maps cannot be used to determine the exact regulations or boundaries between waters. You should always follow the regulations printed in this guide or posted on site.

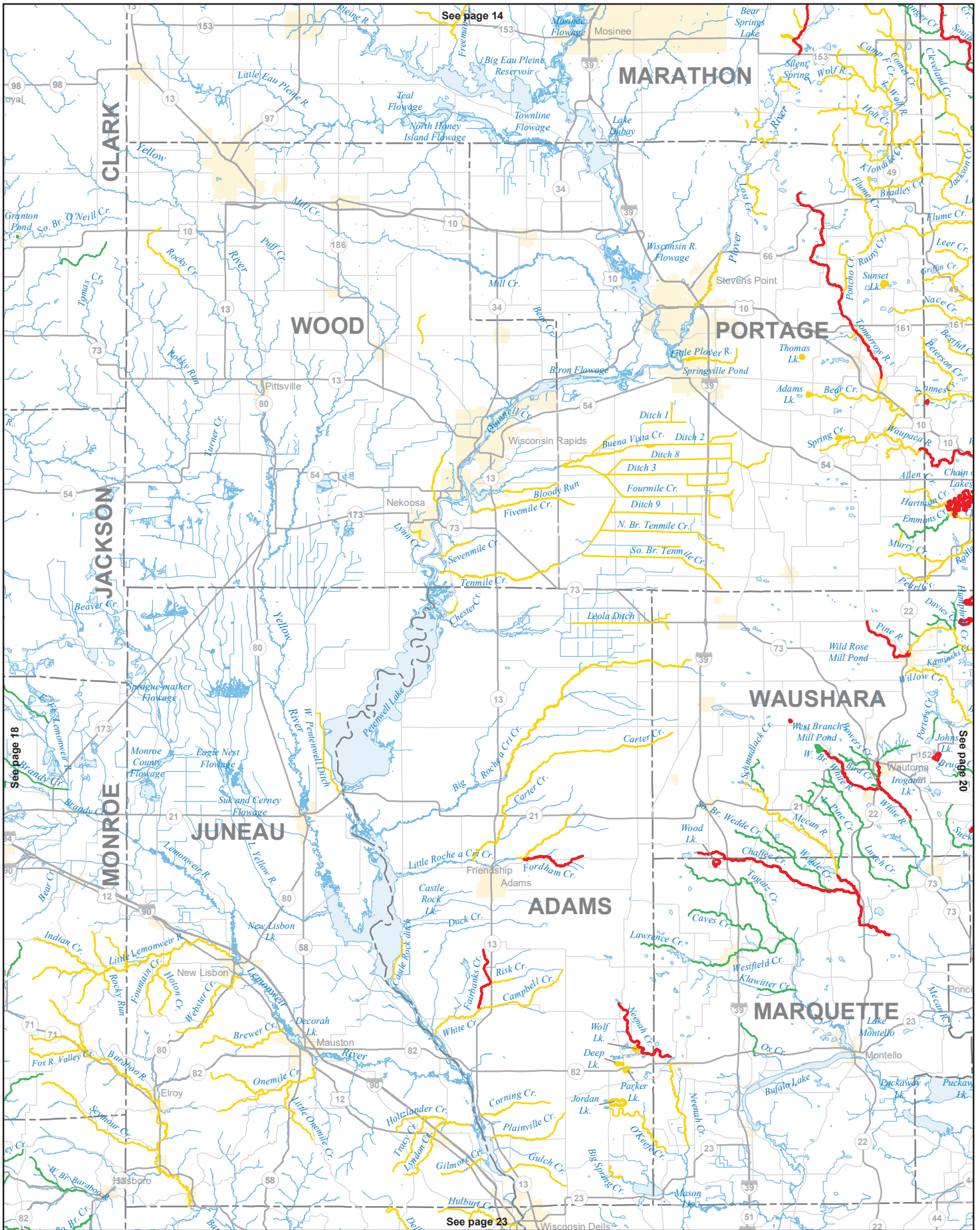


TROUT REGULATIONS KEY		
Regulations Category		
Color	Minimum Length Limit	Daily Bag Limit
	None	5 in total
	8 inches	3 in total
	Special regulations: length and bag limit may vary by water	
	Lake Michigan and Lake Superior tributaries	

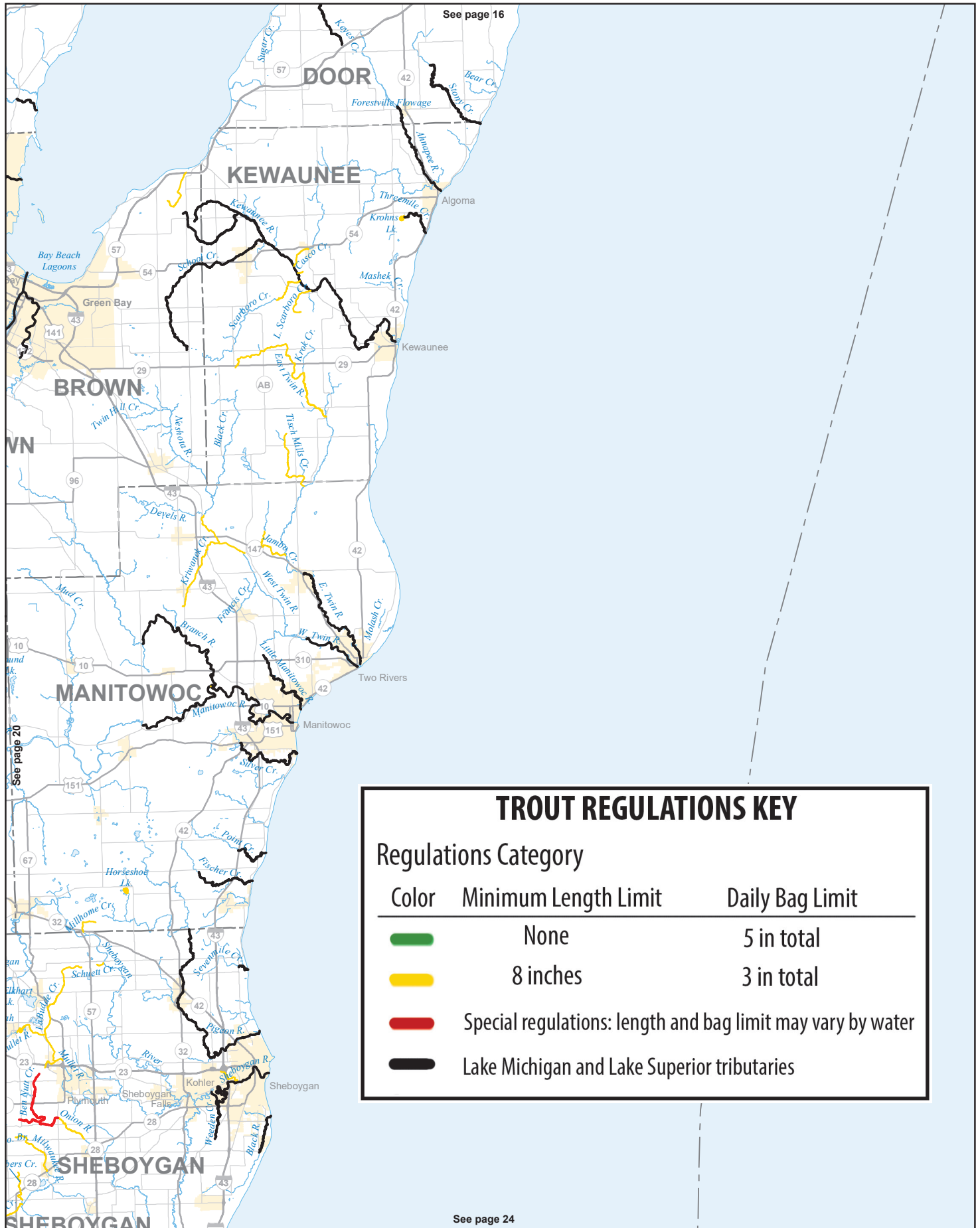
PLEASE NOTE: Maps cannot be used to determine the exact regulations or boundaries between waters. You should always follow the regulations printed in this guide or posted on site.



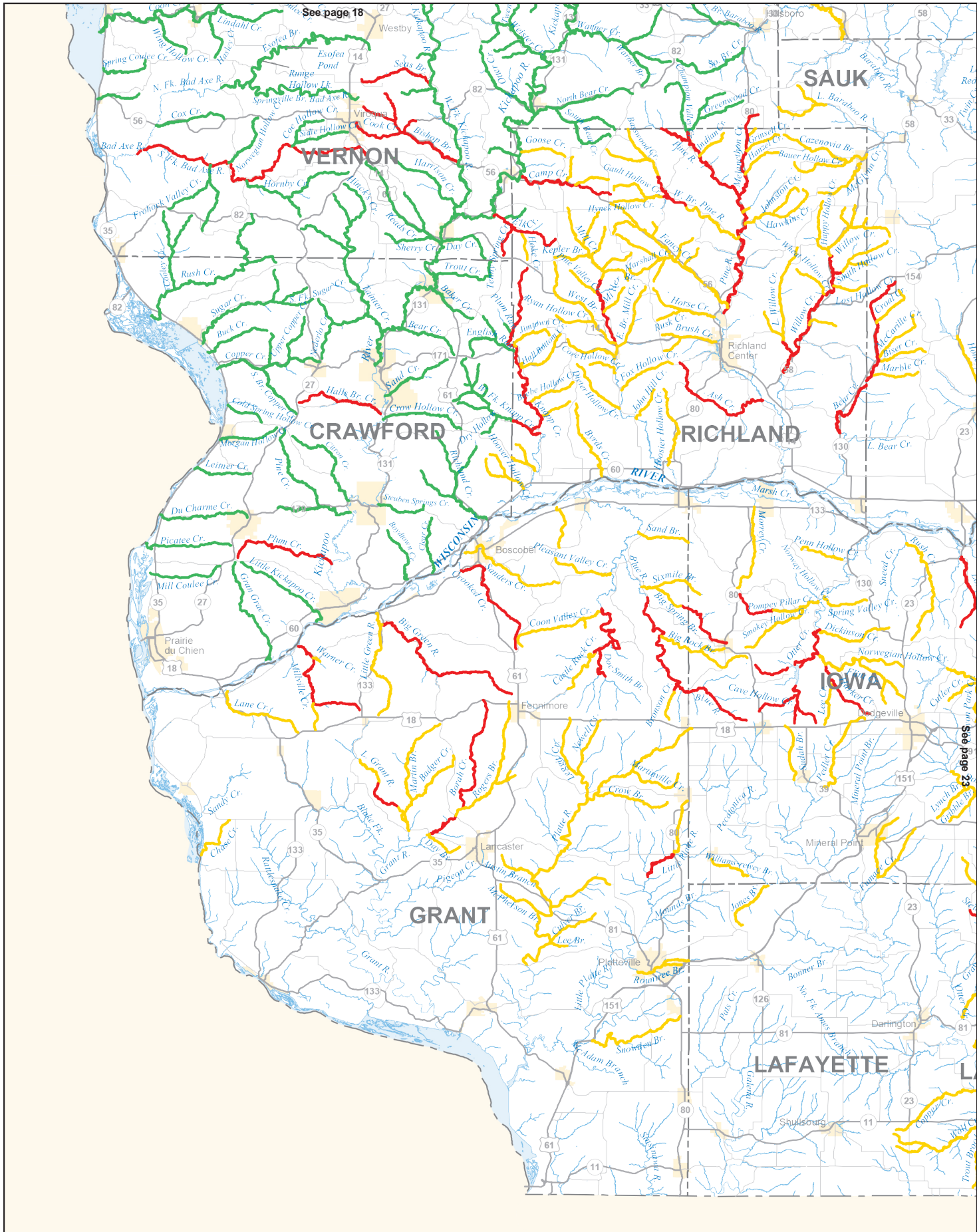
PLEASE NOTE: Maps cannot be used to determine the exact regulations or boundaries between waters. You should always follow the regulations printed in this guide or posted on site.



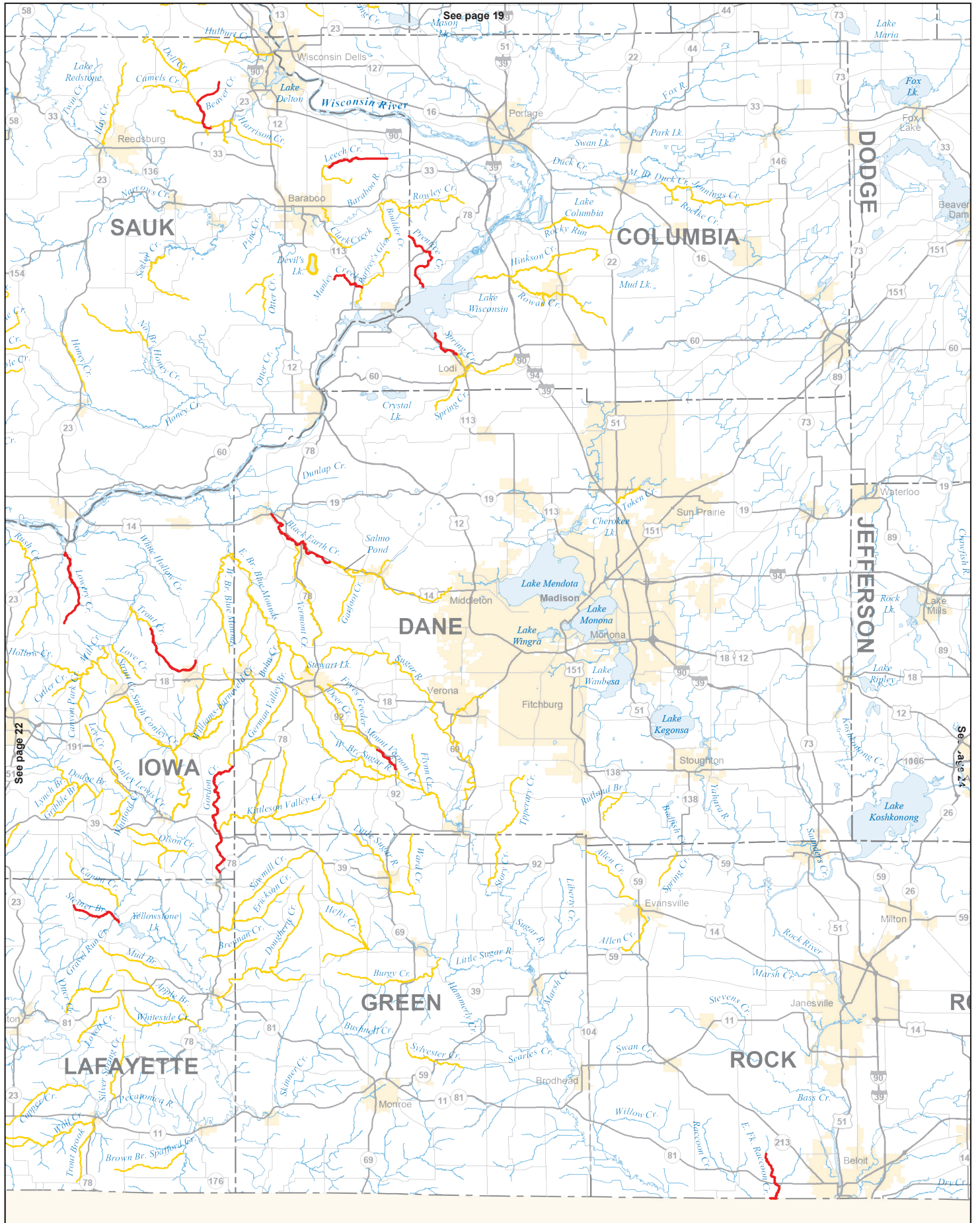
PLEASE NOTE: Maps cannot be used to determine the exact regulations or boundaries between waters. You should always follow the regulations printed in this guide or posted on site.



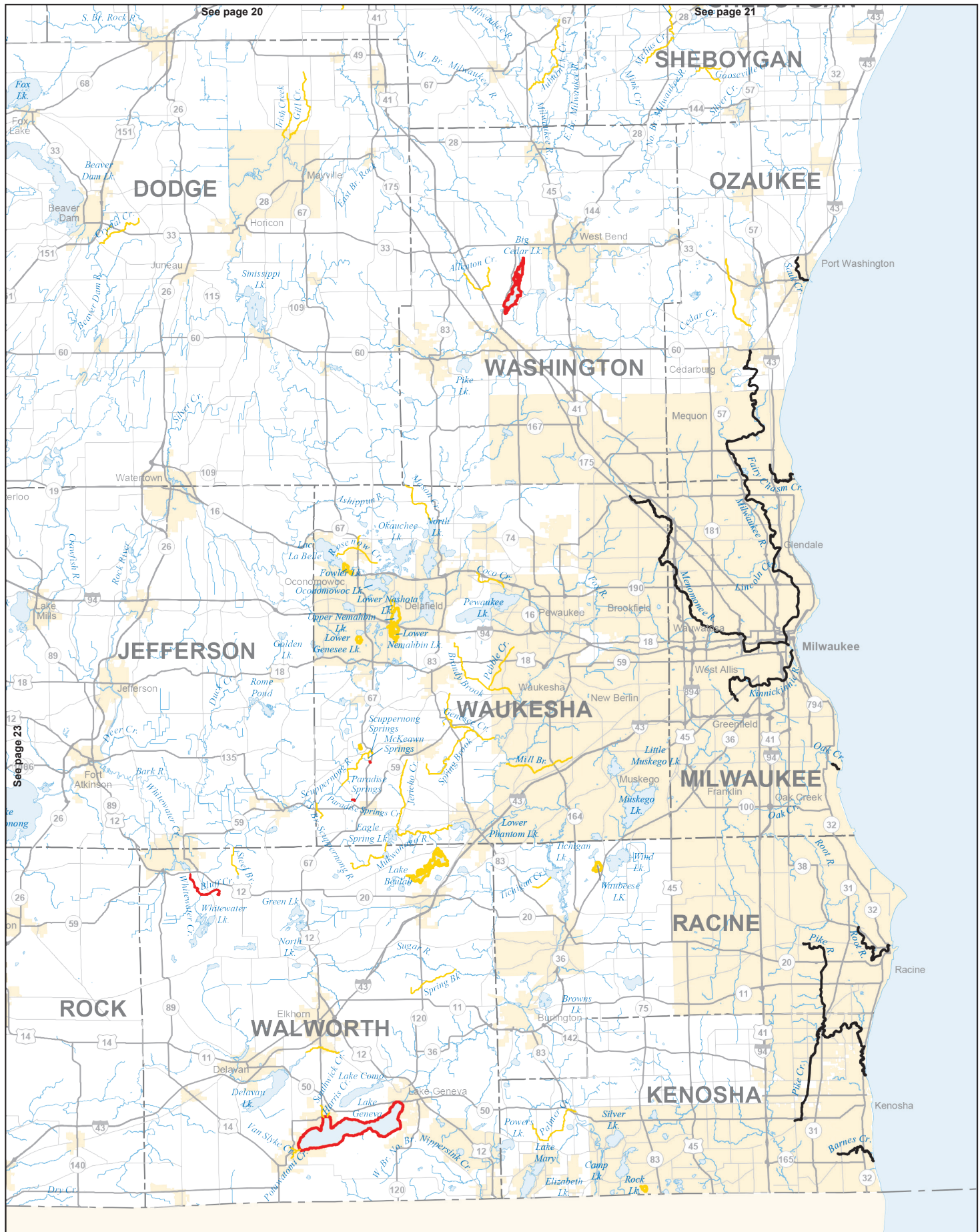
PLEASE NOTE: Maps cannot be used to determine the exact regulations or boundaries between waters. You should always follow the regulations printed in this guide or posted on site.



PLEASE NOTE: Maps cannot be used to determine the exact regulations or boundaries between waters. You should always follow the regulations printed in this guide or posted on site.



PLEASE NOTE: Maps cannot be used to determine the exact regulations or boundaries between waters. You should always follow the regulations printed in this guide or posted on site.



PLEASE NOTE: Maps cannot be used to determine the exact regulations or boundaries between waters. You should always follow the regulations printed in this guide or posted on site.

LANGLADE (continued)

SPRING LAKE (SPRINGS) AND CREEK (S17, T31N, R15E)— Yellow

STARKS SPRINGS— Yellow

SUNSHINE SPRINGS— Yellow

THOMPSON LAKE (SPRINGS)— Yellow

TROUT SPRING— Yellow

UNNAMED SPRINGS 2-1 POLAR OR PAGES (S2, T33N, R11E)— Red

Daily bag limit and length limit: 3 in total: Brown and Rainbow trout over 12"; Brook trout over 8"

UNNAMED SPRINGS 2-14 (S2, T33N, R11E)— Red

Daily bag limit and length limit: 3 in total: Brown and Rainbow trout over 12"; Brook trout over 8"

UNNAMED SPRINGS 3-7 (WEIX) (S3, T33N, R11E)— Red

Daily bag limit and length limit: 3 in total: Brown and Rainbow trout over 12"; Brook trout over 8"

WILLOW SPRINGS— Red

Daily bag limit and length limit: 3 in total: Brown and Rainbow trout over 12"; Brook trout over 8"

WOLF RIVER- downstream from CTH T— Red

Season: May 6 at 5 a.m. to Oct. 15

Daily bag limit and length limit: 3 in total: Brown and Rainbow trout under 12", except 1 fish may be over 18"; Brook trout over 8"

Season: Oct. 16 to Nov. 15 - Red

Daily bag limit: all trout caught must be immediately released.

Gear restriction: only artificial lures may be used

WOODDUCK SPRINGS— Red

Daily bag limit and length limit: 3 in total: Brown and Rainbow trout over 12"; Brook trout over 8"

WOODS FLOWAGE— Yellow

LINCOLN

ALL WATERS NOT LISTED— Green

NOTE: The only lakes in Lincoln County where trout and salmon may be fished after Oct. 15 are: Ament, Henson, Larson, Mirror (kids <16 and certain disabled adults only), Moraine and Tahoe

BIG CAIN CREEK— Yellow

BIG RIB RIVER— Red

Daily bag limit: all trout caught must be immediately released

Gear restriction: only artificial lures may be used

KING SPRING— Red

Daily bag limit and length limit: 3 in total: Brown and Rainbow trout over 12"; Brook trout over 8"

LITTLE CAIN CREEK— Yellow

LITTLE TRAPPE RIVER— Yellow

PAYS SPRINGS (ALTA) (S12, T33N, R7E)— Red

Daily bag limit and length limit: 3 in total: Brown and Rainbow trout over 12"; Brook trout over 8"

PRAIRIE RIVER— Red

Daily bag limit and length limit: 3 in total: Brown and Rainbow trout over 12"; Brook trout over 8"

PRAIRIE RIVER (NORTH BRANCH)— Red

Daily bag limit and length limit: 3 in total: Brown and Rainbow trout over 12"; Brook trout over 8"

PROSPECT CREEK— Yellow

SPRING CREEK— Red

Daily bag limit and length limit: 3 in total: Brown and Rainbow trout over 12"; Brook trout over 8"

SPRING LAKE (SPRINGS) (S16, T32N, R7E)— Red

Daily bag limit and length limit: 3 in total: Brown and Rainbow trout over 12"; Brook trout over 8"

UNNAMED CREEK 12-14 (S35 AND 36, T31N, R4E) — Yellow

MANITOWOC

ALL WATERS— Yellow —For stream flowing into Lake Michigan, see the regulations under Lake Michigan streams on page 2

MARATHON

ALL WATERS NOT LISTED— Yellow

EAU CLAIRE RIVER (MAIN BRANCH)— Green

EMBARRASS RIVER (SOUTH BRANCH)— Red

Daily bag limit and length limit: 3 in total: Brown and Rainbow trout over 12"; Brook trout over 8"

PLOVER RIVER— Red

Daily bag limit and length limit: 3 in total: Brown and Rainbow trout over 12"; Brook trout over 8"

SPRANGER CREEK— Green

SPRING Brook— Red

Daily bag limit and length limit: 5 in total: Brown and Rainbow trout no minimum length; Brook trout under 9"

MARINETTE

ALL WATERS NOT LISTED— Yellow — For streams flowing into Green Bay, see the regulations under Lake Michigan streams on page 2

BEAVER CREEK (NORTH BRANCH)— Red

Daily bag limit and length limit: 3 in total: Brown and Rainbow trout over 12"; Brook trout over 8"

PEMEBONWON RIVER, NORTH BRANCH— Green

PESHTIGO RIVER— Downstream from STH 8 (Forest Co.) to County HWY C (Marinette Co.)

Season: May 6 to Oct. 15 —Yellow

PIKE RIVER (NORTH BRANCH)— Red

Daily bag limit and length limit: 3 in total: Brown and Rainbow trout over 12"; Brook trout over 8"

PIKE RIVER (SOUTH BRANCH) from Brock Pond Dam downstream to the confluence with the North Branch Pike River— Green

RAT RIVER

Season: May 6 to Oct. 15— Yellow

WALKER CREEK— Red

Daily bag limit and length limit: 3 in total: Brown and Rainbow trout over 12"; Brook trout over 8"

WAUSAUKEE RIVER — from the dam in Wausaukee downstream to the confluence with the Menominee River— Green

MARQUETTE

ALL WATERS NOT LISTED— Green

CHAFFEE CREEK—Red

Daily bag limit and length limit: 3 in total: Rainbow trout over 12"; Brown and Brook trout over 8"

MECAN RIVER—Upstream from 14th Ave— Yellow

MECAN RIVER—14th Avenue downstream to Germania marsh barrier— Red

Daily bag limit and length limit: 2 trout over 12"

Gear restriction: only artificial lures may be used

NEENAH CREEK (UPPER)—Upstream from STH 82— Red

Daily bag limit and length limit: 2 trout over 12"

Gear restriction: only artificial lures may be used

NEENAH CREEK (LOWER)—Downstream from STH 82— Yellow

O'KEEFE CREEK— Yellow

WOOD LAKE— Red

Daily bag limit and length limit: 3 trout no minimum length

Open season: May 6 at 5 a.m. to March 3, 2024

MENOMINEE

ALL WATERS— Green

Note: Menominee County is a Native American reservation. Review tribal policies at tribal headquarters. State laws apply to non-Native Americans fishing on the Menominee Reservation.

MILWAUKEE

ALL WATERS— Yellow —For streams flowing into Lake Michigan, see the regulations under Lake Michigan streams on page 2

MONROE

ALL WATERS NOT LISTED— Green

BARABOO RIVER— Yellow

BARABOO RIVER TRIBUTARY (10-9) — Yellow

FOX RIVER VALLEY CREEK (9-4) — Yellow

INDIAN CREEK— Yellow

LITTLE LA CROSSE RIVER— Red

Daily bag limit and length limit: 10 trout in total, no minimum length

LITTLE LEMONWEIR RIVER— Yellow

LITTLE LEMONWEIR RIVER TRIBUTARY (13-1) — Yellow

LITTLE LEMONWEIR RIVER TRIBUTARY (14-1) — Yellow

RULLANDS COULEE— Red

Daily bag limit and length limit: 5 fish under 12"

ROCKY RUN— Yellow

SEYMOUR CREEK— Yellow

OCONTO

ALL WATERS NOT LISTED— Yellow — For streams flowing into Green Bay, see the regulations under Lake Michigan streams on page 2

OCONTO RIVER (SOUTH BRANCH)— Menominee County downstream to STH 32— Red

Daily bag limit and length limit: 2 trout over 12"

Gear restriction: only artificial lures may be used

ONEIDA

ALL WATERS NOT LISTED— Green

BEARSKIN CREEK— Yellow

BIG CARR LAKE— Red

Daily bag limit and length limit: 1 Lake trout over 30", Other trout Green

Season: Lake trout — May 6 at 5 a.m. to Sept. 30; Other trout: May 6 at 5 a.m. to March 3, 2024

DOROTHY LAKE— Red

Daily bag limit and length limit: 3 trout, no minimum length

Open season: May 6 at 5 a.m. to March 3, 2024

HAWK LAKE— Red

Daily bag limit and length limit: 3 trout, no minimum length

Open season: May 6 at 5 a.m. to March 3, 2024

LITTLE BASS LAKE (S15, T39N, R7E)— Red

Daily bag limit and length limit: 3 trout, no minimum length

Open season: May 6 at 5 a.m. to March 3, 2024

LITTLE PINE CREEK— Yellow

MERCER SPRINGS— Red

Daily bag limit and length limit: 3 trout, no minimum length

NOISY CREEK— Yellow

PERCH LAKE (S2, T36N, R7E)— Red

Daily bag limit and length limit: 3 trout, no minimum length

Open season: May 6 at 5 a.m. to March 3, 2024

TROUT CREEK— Yellow

WOODBORO SPRINGS (headwaters of Trout Creek)— Yellow

OUTAGAMIE

ALL WATERS— Green

OZAUKEE

ALL WATERS— Yellow —For streams flowing into Lake Michigan, see the regulations under Lake Michigan streams on page 2

PEPIN

ALL WATERS NOT LISTED— Green

BEAR CREEK— Red

Daily bag limit and length limit: 3 in total: Brown and Rainbow trout over 12"; Brook trout over 8"

PLUM CREEK— Red

Daily bag limit and length limit: 3 in total: Brown and Rainbow trout over 12"; Brook trout over 8"

PIERCE

ALL WATERS NOT LISTED— Red

Daily bag limit and length limit: 3 in total: Brown and Rainbow trout over 12"; Brook trout over 8"

CADY CREEK— Yellow

GEORGE LAKE (SPRING VALLEY FLOWAGE) — Green

KINNICKINNIC RIVER AND ITS TRIBUTARIES (2-16, 8-11, 8-13, 9-15a, 9-15b, 24-11, 14-15, Rocky Brook, South Fork Kinnickinnic River)— Red

Daily bag limit and length limit: 5 fish under 12"

NORTH PINE CREEK— Yellow

PINE CREEK— Yellow

POLK

ALL WATERS— Green

PORTAGE

ALL WATERS NOT LISTED— Yellow

NOTE: The only lakes in Portage County where trout and salmon may be fished after Oct. 15 are: Adams, Thomas, Sunset and Spring

EMMONS CREEK— Green

TOMORROW (WAUPACA) RIVER—Durant Rd. downstream to River Road in Waupaca County— Red

Daily bag limit and length limit: 1 over 18"

Gear restriction: only artificial lures may be used

TOMORROW (WAUPACA) RIVER—Amherst Dam upstream to Clementson Road— Red

Daily bag limit and length limit: 2 over 12"

Gear restriction: only artificial lures may be used

TOMORROW (WAUPACA) RIVER (UPPER)—Upstream from Clementson Road— Red

Daily bag limit and length limit: 3 in total: Brown and Rainbow trout over 12"; Brook trout over 8"

PRICE

ALL WATERS NOT LISTED— Green
FOULDS SPRINGS— Yellow
PRICE CREEK—Upstream to CTHW— Yellow

RAGINE

ALL WATERS NOT LISTED— Yellow —For streams flowing into Lake Michigan, see the regulations under Lake Michigan streams on page 2

RICHLAND

ALL WATERS NOT LISTED— Yellow
ASH CREEK—Upstream from CTH TB— Red
Daily bag limit and length limit: 5 trout in total: all Brook trout caught must be immediately released; Brown trout and Rainbow trout no minimum length.
Gear restriction: only artificial lures may be used.
BEAR CREEK—Upstream from STH 130(T9N, R2E, Sec. 14, NWSW)— Red
Daily bag limit and length limit: 2 over 12"
CAMP CREEK— Red
Daily bag limit and length limit: 5 under 12"
CHADWICK HOLLOW CREEK— Green
CHAMPION VALLEY CREEK—Downstream from CTH H— Red
Daily bag limit and length limit: 2 over 12"
CHAMPION VALLEY CREEK— upstream from CTH "H" — Green
ELK CREEK— Red
Daily bag limit and length limit: 5 under 12"
ENGLISH RUN— Green
GAULT HOLLOW CREEK—Downstream from CTH H— Red
Daily bag limit: all trout caught must be immediately released.
GREENWOOD VALLEY CREEK— Green
KICKAPOO RIVER— Green
KNAPP CREEK—Upstream from STH 171— Red
Daily bag limit and length limit: 5 under 12"
KNAPP CREEK—Upstream from CTH F at Excelsior to STH 171 — Red
Daily bag limit and length limit: 2 over 12"
LITTLE WILLOW CREEK—Downstream from Spiral Road— Red
Daily bag limit and length limit: 2 over 12"
MELANTHON CREEK — Red
Daily bag limit and length limit: 5 trout in total: all Brook trout caught must be immediately released; Brown trout and Rainbow trout no minimum length.
MILL CREEK—USH 14 upstream to Quarry Hill Road— Red
Daily bag limit and length limit: 5 under 12"
PINE RIVER—upstream from CTH AA — Red
Daily bag limit and length limit: 2 over 12"
SOUTH BEAR CREEK— Green
WEST BRANCH PINE RIVER—Old County Farm Dr. upstream to Spangler Ridge Rd- Red
Daily bag limit: all trout caught must be immediately released.
WEST FORK KNAPP CREEK upstream to Spring Road (Richland/Crawford County Line) — Red
Daily bag limit and length limit: 2 over 12"
WILLOW CREEK—STH 58 bridge 2.75 miles south of Ithaca upstream to Lost Hollow Road— Red
Daily bag limit and length limit: 2 over 12"
WILLOW CREEK—Lost Hollow Road upstream to STH 58 bridge 0.25 mile north of Loyd— Red
Daily bag limit and length limit: 5 under 12"

ROCK

ALL WATERS NOT LISTED— Yellow
EAST BRANCH RACCOON CREEK — Cleophus Road (T11N, R11E, Sec. 13) downstream to the State Line -- Red
Daily bag limit: all trout caught must be immediately released.
Gear restriction: only artificial lures may be used.

RUSK

ALL WATERS NOT LISTED— Green
BASS L (WEYERHAEUSER)— Red
Daily bag limit and length limit: 1 trout over 14"
Open season: May 6 at 5 a.m. to March 3, 2024
BIG WEIRGOR CREEK— Yellow
LITTLE WEIGOR CREEK— Yellow
MAIN CREEK (SOUTH FORK) — Yellow

SAUK

ALL WATERS NOT LISTED— Yellow
BEAR CREEK— Red
Daily bag limit and length limit: 2 over 12"
BEAVER CREEK— Red
Daily bag limit: all trout caught must be immediately released
Gear restriction: only artificial lures may be used
DELL CREEK—Coon Bluff Rd upstream to South Avenue-- Red
Daily bag limit: all trout caught must be immediately released
Gear restriction: only artificial lures may be used
LEECH CREEK— between CTH T and CTH U — Red
Daily bag limit and length limit: 2 over 12"
MANLEY CREEK— Red
Daily bag limit and length limit: 5 in total: Brown and Rainbow trout no length limit; Brook trout under 9"

SAWYER

ALL WATERS NOT LISTED— Yellow
BADGER CREEK— Green
BEAN Brook— Green
BEAVER CREEK— Green
BUCKHORN CREEK AND SPRINGS— Green
CAMP SMITH LAKE— Red
Daily bag limit and length limit: 3 in total: Brown and Rainbow trout over 12"; Brook trout over 8"
Open season: May 6 at 5 a.m. to March 3, 2024
CHIMPANAZIE CREEK— Green
DEER CREEK (METEOR TOWNSHIP)— Green
FIDDLER CREEK— Red
Daily bag limit: all trout caught must be immediately released
Gear restriction: only artificial lures may be used
FORTY-ONE CREEK— Green
HACKETT CREEK— Green
HATCHERY CREEK — Green
HAUER CREEK AND SPRINGS— Red
Daily bag limit and length limit: 1 trout over 14"
Gear restriction: only artificial lures may be used
MAPLE CREEK AND SPRINGS— Green
NAMEKAGON RIVER—County E bridge (Washburn) upstream to Lake Namekagon Dam— Red
Daily bag limit and length limit: 1 trout over 14"
Gear restriction: only artificial lures may be used
PIPESTONE CREEK— Green

STRESS SPRINGS— Red

Daily bag limit: all trout caught must be immediately released

Gear restriction: only artificial lures may be used

THIRTY-THREE CREEK— Green

SHAWANO

ALL WATERS NOT LISTED— Green

BAHR LAKE— Red

Daily bag limit and length limit: 3 fish in total, no minimum length

Open season: May 6 at 5 a.m. to March 3, 2024

COMET CREEK— Yellow

EMBARRASS RIVER (SOUTH BRANCH)—Upstream from Tigerton Dam— Red

Daily bag limit and length limit: 3 in total: Brown and Rainbow trout over 12"; Brook trout over 8"

HOMME POND— Red

Daily bag limit and length limit: 3 fish in total, no minimum length

JACKSON CREEK— Yellow

KORTH LAKE— Red

Daily bag limit and length limit: 3 fish in total, no minimum length

Season: May 6 at 5 a.m. to March 3, 2024

MILL CREEK— Red

Daily bag limit and length limit: 3 in total: Brown and Rainbow trout over 12"; Brook trout over 8"

OCONTO RIVER— Yellow

SHEBOYGAN

ALL WATERS NOT LISTED— Yellow —For streams flowing into Lake Michigan, see the regulations under Lake Michigan streams on page 2

BEN NUTT CREEK— Red

Daily bag limit and length limit: 2 over 12"

Gear restriction: only artificial lures may be used

MILL CREEK— Red

Daily bag limit and length limit: 2 over 12"

Gear restriction: only artificial lures may be used

ONION RIVER—Upstream from CTH E— Red

Daily bag limit and length limit: 2 over 12"

Gear restriction: only artificial lures may be used

ST. CROIX

ALL WATERS NOT LISTED— Green

CADY CREEK— Yellow

KINNICKINNIC RIVER AND TRIBUTARIES (21-4, 30-1, 30-10, 36-1, 36-15, Kelly Creek, Nye Creek, Parker Creek, 13-2, Ted Creek)— Red

Daily bag limit and length limit: 5 fish under 12"

RUSH RIVER AND TRIBUTARIES (35-9)— Red

Daily bag limit and length limit: 3 in total: Brown and Rainbow trout over 12"; Brook trout over 8"

WILLOW RIVER—From Lake Mallalieu Dam upstream to Little Falls Flowage Dam— Red

Daily bag limit and length limit: 1 fish over 14"

WILLOW RIVER (RACE)— Red

Daily bag limit and length limit: 1 fish over 14"

TAYLOR

ALL WATERS NOT LISTED— Green

BIG RIB RIVER—CTH C downstream to STH 64— Yellow

BIG RIB RIVER—Downstream from STH 64— Red

Daily bag limit: all trout caught must be immediately released

Gear restriction: only artificial lures may be used

BLACK CREEK— Yellow

WOOD CREEK— Yellow

TREMPEALEAU

ALL WATERS— Green

VERNON

ALL WATERS NOT LISTED— Green

BAD AXE RIVER, SOUTH FORK— Red

Daily bag limit and length limit: 10 trout in total, no minimum length

BISHOP BRANCH AND TRIBUTARIES (Cook Creek, Maple Dale Creek, Pine Hollow Creek and Bishops Branch Tributary)— Red

Daily bag limit and length limit: all Brook trout caught must be immediately released, 5 Brown and Rainbow trout, no minimum length

ELK CREEK— Red

Daily bag limit and length limit: 5 fish under 12"

LITTLE BARABOO RIVER—Downstream of HWY EE — Yellow

MELANCTHON CREEK— Red

Daily bag limit and length limit: all Brook trout caught must be immediately released, 5 Brown and Rainbow trout, no minimum length

RULLANDS COULEE— Red

Daily bag limit and length limit: 5 fish under 12"

SEAS BRANCH CREEK— Red

Daily bag limit and length limit: all Brook trout caught must be immediately released, 5 Brown and Rainbow trout, no minimum length

TENNEY SPRINGS CREEK— Red

Daily bag limit and length limit: 5 trout in total: all Brook trout caught must be immediately released; Brown trout and Rainbow trout no minimum length

TIMBER COULEE CREEK— Red

Daily bag limit: all trout caught must be immediately released

UNNAMED CREEK 18-13— Red

Daily bag limit and length limit: all Brook trout caught must be immediately released, 5 Brown and Rainbow trout, no minimum length

VILAS

ALL WATERS NOT LISTED— Green

BLACK OAK LAKE— Red

Daily bag limit and length limit: 1 Lake trout over 30", other trout— Green

Season: Lake trout — May 6 at 5 a.m. to Sept. 30; Other trout — May 6 at 5 a.m. to March 3, 2024

BRULE CREEK— Red

Daily bag limit and length limit: 3 trout over 10"

DEERSKIN RIVER— Yellow

ELVOY CREEK— Red

Daily bag limit and length limit: 3 trout over 10"

FALLISON LAKE— Yellow

Season: May 6 at 5 a.m. to March 3, 2024

FENCE LAKE— Red

Daily bag limit and length limit: 2 fish over 12"

Season: May 6 at 5 a.m. to March 3, 2024

LITTLE DEERSKIN RIVER— Yellow

LITTLE TAMARACK CREEK— Yellow

LITTLE TROUT LAKE— Red

Daily bag limit and length limit: 1 Lake trout over 30", other trout – Green

Season: Lake trout – May 6 at 5 a.m. to Sept. 30; Other trout – May 6 at 5 a.m. to March 3, 2024

LONG LAKE— Red

Daily bag limit and length limit: 1 Lake trout over 30", other trout – Green

Season: Lake trout – May 6 at 5 a.m. to Sept. 30; Other trout – May 6 at 5 a.m. to March 3, 2024

MILITARY CREEK— Yellow

MISHONAGON CREEK— Yellow

NORTH CREEK & SPRINGS— Yellow

PALLETTE LAKE— No open season — Red

PLUM CREEK— Yellow

SIPHON CREEK & SPRINGS — Yellow

STORMY LAKE— Red

Daily bag limit and length limit: 2 fish over 12"

Season: May 6 at 5 a.m. to March 3, 2024

TROUT LAKE— Red

Daily bag limit and length limit: 1 Lake trout over 30", other trout – Green

Season: Lake trout – May 6 at 5 a.m. to Sept. 30; Other trout – May 6 at 5 a.m. to March 3, 2024

TAMARACK CREEK— Yellow

WHITE SAND LAKE (T42N R07E S26 Near Boulder Junction) — Red

Daily bag limit and length limit: 1 Lake trout over 30", other trout – Green

Season: Lake trout – May 6 at 5 a.m. to Sept. 30; Other trout – May 6 at 5 a.m. to March 3, 2024

WILDWOOD LAKE— Red

Daily bag limit and length limit: 2 fish over 12"

Season: May 6 at 5 a.m. to March 3, 2024

WALWORTH

ALL WATERS NOT LISTED— Yellow

BLUFF CREEK—from terminus with Whitewater Creek west of highway P to headwaters east of highway P— Red

Daily bag limit and length limit: 2 fish over 12"

LAKE GENEVA— Red

Daily bag limit and length limit: 2 Lake trout over 17", other trout – Yellow

Season: Lake trout— Jan. 7 to Sept. 30; Other trout— May 6 at 5 a.m. to March 3, 2024

WHITEWATER CREEK—from Willis Ray Road to terminus with Bluff Creek west of highway P— Red

Daily bag limit and length limit: 2 fish over 12"

WASHBURN

ALL WATERS NOT LISTED— Green

BRILL RIVER— Red

Daily bag limit and length limit: 2 fish over 12"

NAMEKAGON RIVER—County E bridge (Washburn Co.) upstream to Lake Namekagon Dam— Red

Daily bag limit and length limit: 1 trout over 14"

Gear restriction: only artificial lures may be used

WASHINGTON

ALL WATERS— Yellow

BIG CEDAR LAKE— Red

Daily bag limit and length limit: 2 Lake trout over 17", other trout – Yellow

Season: Lake trout— Jan. 7 to Sept. 30; Other trout – May 6 at 5 a.m. to March 3, 2024

WAUKESHA

ALL WATERS NOT LISTED— Yellow

MCKEAWN SPRINGS—Outlet of Pond upstream to HWY 67 — Red

Daily bag limit: all trout caught must be immediately released

Gear restriction: only artificial lures may be used

Season: Continuous open season

PARADISE SPRINGS & CREEK—Upstream from CTH N— Red

Daily bag limit: all trout caught must be immediately released

Gear restriction: only artificial lures may be used

Season: Continuous open season

WAUPACA

ALL WATERS NOT LISTED— Green

ALLEN CREEK— Yellow

BASS LAKE— Red

Daily bag limit and length limit: 3 trout, no minimum length

Season: May 6 at 5 a.m. to March 3, 2024

BESTUL CREEK— Yellow

CHAIN OF LAKES (ALL LAKES)— Red

Daily bag limit and length limit: 2 fish over 12"

Season: May 6 at 5 a.m. to March 3, 2024

COMET CREEK— Yellow

CRYSTAL RIVER— Yellow

FLUME CREEK— Yellow

GRIFFIN CREEK— Yellow

HARTMAN CREEK— Yellow

JACKSON CREEK— Yellow

JONES CREEK— Yellow

LEER CREEK— Yellow

LITTLE LONG LAKE— Red

Daily bag limit and length limit: 3 trout, no minimum length

Season: May 6 at 5 a.m. to March 3, 2024

LITTLE WOLF RIVER— Yellow

LITTLE WOLF RIVER (SOUTH BRANCH)— Yellow

MACK (Brown) CREEK— Yellow

MCLEAN CREEK— Yellow

MIRROR LAKE— Red

Daily bag limit and length limit: 3 trout, no minimum length

Season: May 6 at 5 a.m. to March 3, 2024

MURRAY CREEK— Yellow

NACE CREEK— Yellow

NAYLOR CREEK— Yellow

OLSON CREEK— Yellow

PEARL CREEK— Yellow

PETERSON CREEK— Yellow

RADLEY CREEK— Yellow

SANNES CREEK— Yellow

SKUNK LAKE— Red

Daily bag limit and length limit: 3 trout, no minimum length

Season: May 6 at 5 a.m. to March 3, 2024

WALLA WALLA CREEK— Yellow

WAUPACA (TOMORROW) RIVER—River Road upstream to Durant Road in Portage County— Red
Daily bag limit and length limit: 1 over 18"
Gear restriction: only artificial lures may be used
WAUPACA (TOMORROW) RIVER—All except portion listed above— Yellow

WAUSHARA

ALL WATERS NOT LISTED— Green
BIG ROCHE A CRI CREEK— Yellow
CARTER CREEK— Yellow
CHAFFEE CREEK—Red
Daily bag limit and length limit: 3 in total: Rainbow trout over 12"; Brown and Brook trout over 8"
GILBERT LAKE— Red
Daily bag limit and length limit: 3 trout, no minimum length
Season: May 6 at 5 a.m. to March 3, 2024
JOHNS LAKE— Red
Daily bag limit and length limit: 3 trout, no minimum length
Season: May 6 at 5 a.m. to March 3, 2024
LEOLA DITCH— Yellow
LONG LAKE (TOWN OF SAXEVILLE)— Red
Daily bag limit and length limit: 3 trout, no minimum length
Season: May 6 at 5 a.m. to March 3, 2024
LYMAN (HARTFORD) LAKE — Red
Daily bag limit and length limit: 3 trout, no minimum length
Season: May 6 at 5 a.m. to March 3, 2024
MECAN RIVER & SPRINGS— Yellow
PEARL LAKE— Red
Daily bag limit and length limit: 3 trout, no minimum length
Season: May 6 at 5 a.m. to March 3, 2024
PINE LAKE— Red
Daily bag limit and length limit: 3 trout, no minimum length
Season: May 6 at 5 a.m. to March 3, 2024
PINE RIVER (LOWER)—HWY 22 downstream from Wild Rose Mill Dam— Yellow
PINE RIVER (UPPER)—Upstream from CTH AA— Red
Daily bag limit and length limit: 3 trout, no minimum length
REDGRANITE QUARRY— Red
Daily bag limit and length limit: 3 trout, no minimum length
Season: May 6 at 5 a.m. to March 3, 2024
SPRING LAKE— Red
Daily bag limit and length limit: 3 trout, no minimum length
Season: May 6 at 5 a.m. to March 3, 2024
WHITE RIVER (MAIN BRANCH)— Lower Millpond Dam (CTY RD YY) upstream to State HWY 21 and 73— Red
Daily bag limit and length limit: 2 over 12"
Gear restriction: only artificial lures may be used

WHITE RIVER (WEST BRANCH)—Red
Daily bag limit and length limit: 3 in total: Rainbow trout over 12"; Brown and Brook trout over 8"
WILD ROSE MILLPOND— from HWY 22 Upstream to CTY Rd AA— Red
Daily bag limit and length limit: 3 trout, no minimum length
Season: May 6 at 5 a.m. to March 3, 2024
WILLOW CREEK— Yellow

WINNEBAGO

ALL WATERS— Green

WOOD

ALL WATERS— Yellow



STOP AQUATIC HITCHHIKERS!™

Prevent the transport of nuisance species.
 Clean ALL recreational equipment.

Aquatic invasive species are nonnative plants, animals and pathogens that harm our environment and our economy. Wading anglers are reminded to do their part to help stop aquatic hitchhikers this fishing season. When moving between streams, anglers need to remove all plants, animals and debris from gear, and to drain all water from equipment. A stiff brush to scrub gear and a small sprayer filled with tap water is helpful in removing small, hard-to-see invasive species, like the recently discovered New Zealand mudsnail. If you have recently been out of state or frequently fish between basins, consider using different gear or more thorough decontamination methods as you are at high risk of spreading invasive species.

To prevent the spread of aquatic invasive species, all water users are required by law to:

- **INSPECT** your boots, waders, nets, and other equipment.
- **REMOVE** any attached aquatic plants or animals (Before moving to a new waterbody)
- **DRAIN** all water from boats, motors and all equipment
- **NEVER MOVE** live fish away from a waterbody. Icing your catch is a great alternative.
- **DISPOSE** of unwanted bait in the trash.

Trout Fishing Made Easy

New to trout fishing? Don't know where to go? Here are some trout fishing locations recommended by fisheries biologists for their ability to produce fish and their ease of access. Give them a try!



Species



Coho - Coho salmon



Brn - Brown trout



Brk - Brook trout



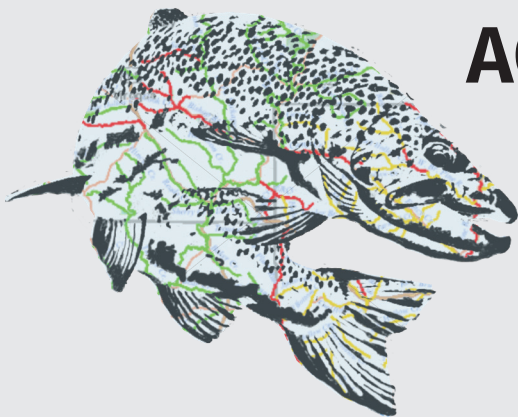
Rbow - Rainbow trout

No	Water	County	Origin	Species	No	Water	County	Origin ¹	Species
1	Flag River	Bayfield	NR	Brn, Brk, Coho & Rbow	21	Pinnacle Rock Pond	Monroe	Stocked	Brk
2	Bois Brule River	Bayfield	NR	Brn, Brk, Coho & Rbow	22	Coon Creek	Vernon	NR/Stocked	Brn & Brk
3	South Fork White River	Bayfield	NR	Brn & Brk	23	Camp Creek	Richland	NR	Brn
4	Mimi Lake	Bayfield	Stocked	Brk	24	Mill Creek	Richland	NR	Brn
5	Devil's Creek	Ashland	NR	Brk	25	Willow Creek	Richland	NR	Brn
6	Hatchery Creek	Sawyer	NR	Brk	26	Ash Creek	Richland	NR	Brn & Brk
7	Stress Springs	Sawyer	NR	Brk	27	Honey Creek	Sauk	NR/Stocked	Brn
8	North Fok Clam River	Burnett	NR	Brn & Brk	28	Rowan Creek	Columbia	NR/Stocked	Brn & Rbo
9	Weber Lake	Iron	Stocked	Rbow	29	Big Spring Branch	Grant	NR	Brn & Brk
10	Balsam Lake	Sawyer	Stocked	Rbow	30	Big Green River	Grant	NR	Brn
11	Turtle Creek	Barron		Brn & Brk	31	Castle Rock Creek	Grant	NR/Stocked	Brn & Rbow
12	Mirror Lake	Lincoln	Stocked	Brk & Rbow	32	Blue River	Grant	NR/Stocked	Brn & Rbow
13	North Branch Oconto River	Forest			33	Borah Creek	Grant	NR	Brn
14	East Branch Eau Claire River	Langlade	NR	Brk	34	Gordon Creek	Iowa	NR	Brn
15	Remington Pond	Langlade	NR/Stocked	Brn, Brk & Rbow	35	Black Earth Creek	Dane	NR/Stocked	Brn & Rbow
16	South Branch Oconto River	Oconto			36	Rosenow Creek	Waukesha	NR	Brk
17	North Branch Beaver Creek	Marinette			37	Paradise Springs	Waukesha	NR/Stocked	Brk
18	Waupaca River	Waupaca	Stocked	Brn & Rbow	38	Mukwonago River	Waukesha	Stocked	Brk
19	Mecan River	Waushara	NR	Brn & Brk	39	Sugar River Creek	Dane	NR	Brn
20	Veterans Memorial Park Pond	La Crosse	Stocked	Rbow	40	Spring Creek (Lodi)	Columbia	NR/Stocked	Brn & Rbow

¹Origin: NR - population sustained through natural reproduction; NR/Stocked - Some natural reproduction, but stocking required to maintain a desirable fishery; Stocked - stocking required to provide a fishery

Public Or Private? How Do I Know If I'm Trespassing?

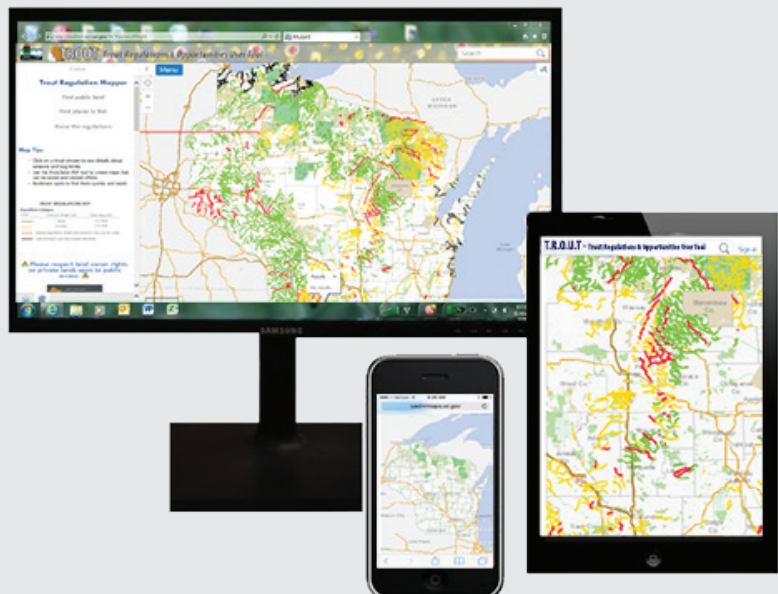
- Navigability determines whether a waterway is public or private. Navigable lakes and streams are public waterways.
- A waterway is navigable if it has a bed and banks and it is possible to float a canoe or other small craft at sometime of the year—even if only during spring floods.
- Because they are public, you may use navigable waters for fishing, boating, swimming or other recreational activities, provided public access is available, or you have permission of the land owner to cross their property to reach the waterway. Once on a navigable waterway, AS LONG AS YOU KEEP YOUR FEET WET, YOU MAY WALK ALONG THE BED OF THE STREAM, FISH, SWIM OR BOAT IN ANY NAVIGABLE LAKE OR STREAM.



ACCESS. ACCESS. ACCESS.

Think T.R.O.U.T Trout Regulations & Opportunities User Tool

- On-the-go access to trout streams and regulations
- Roads, aerial images and fishing easements
- Finds your location (you are here!)
- Works on desktops, tablets and mobile devices



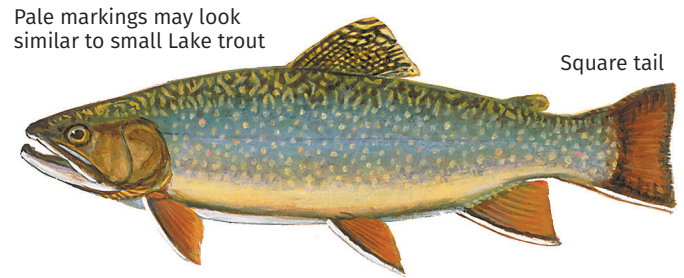
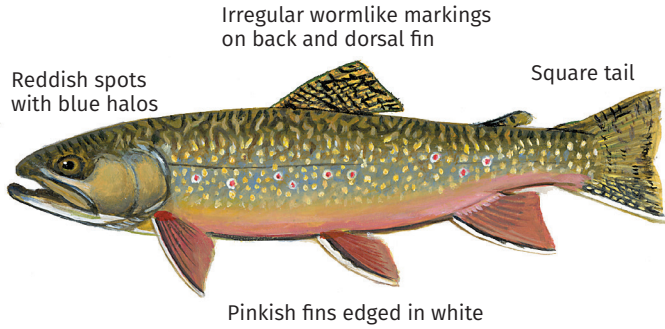
***[dnr.wi.gov/topic/fishing/
trout/trout.html](http://dnr.wi.gov/topic/fishing/trout/trout.html)***

IDENTIFYING WISCONSIN'S TROUT AND SALMON

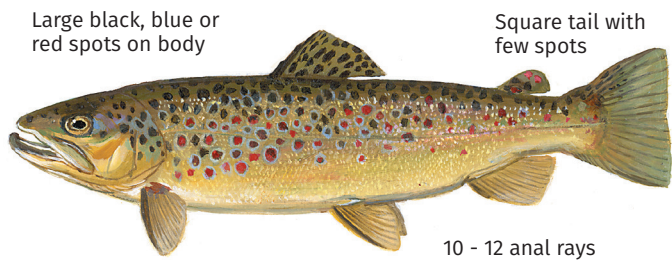
Inland Trout

Great Lakes Trout

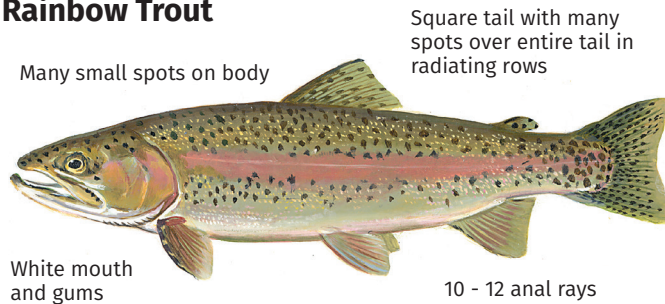
Brook Trout



Brown Trout

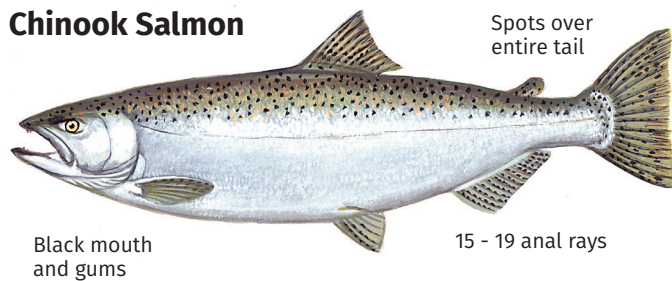


Rainbow Trout

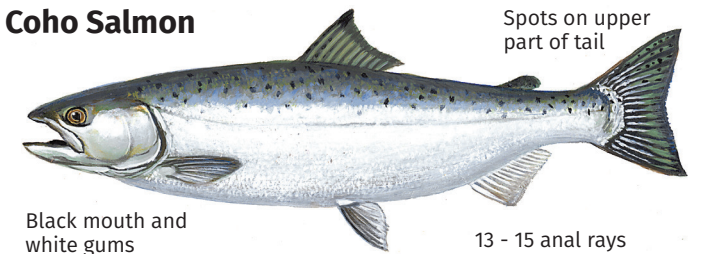


Great Lakes Salmon and Lake trout

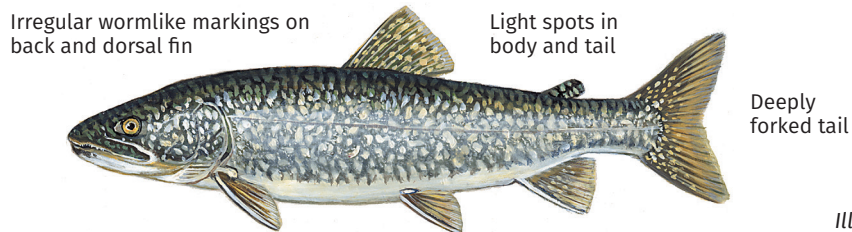
Chinook Salmon



Coho Salmon



Lake trout



Illustrations by Virgil Beck

FISHING WISCONSIN'S TROUT STREAMS

Map Index

The maps in this booklet are a general guide to help you locate trout waters and they show approximate boundaries of all trout streams classified by the DNR. They do not include all unnamed streams or all spring ponds. For exact boundaries of regulations and open seasons, see the text of this pamphlet and observe signs posted on the waters.

For more information, please view the Wisconsin Trout Streams publication and detailed trout stream maps found at dnr.wi.gov/topic/fishing/trout/streamclassification.html.

TROUT REGULATIONS KEY

The numbered sections indicate the page number of the map inside. The legend shows the regulation categories that are shown on the maps inside. Each color means a different length and bag limit.

Regulation Category

Color	Minimum Length Limit	Daily Bag Limit
Green	None	5 in total
Yellow	8 inches	3 in total
Red	Special regulations: length and bag limits vary by specific water.	
Black line	Lake Michigan and Lake Superior tributaries	

