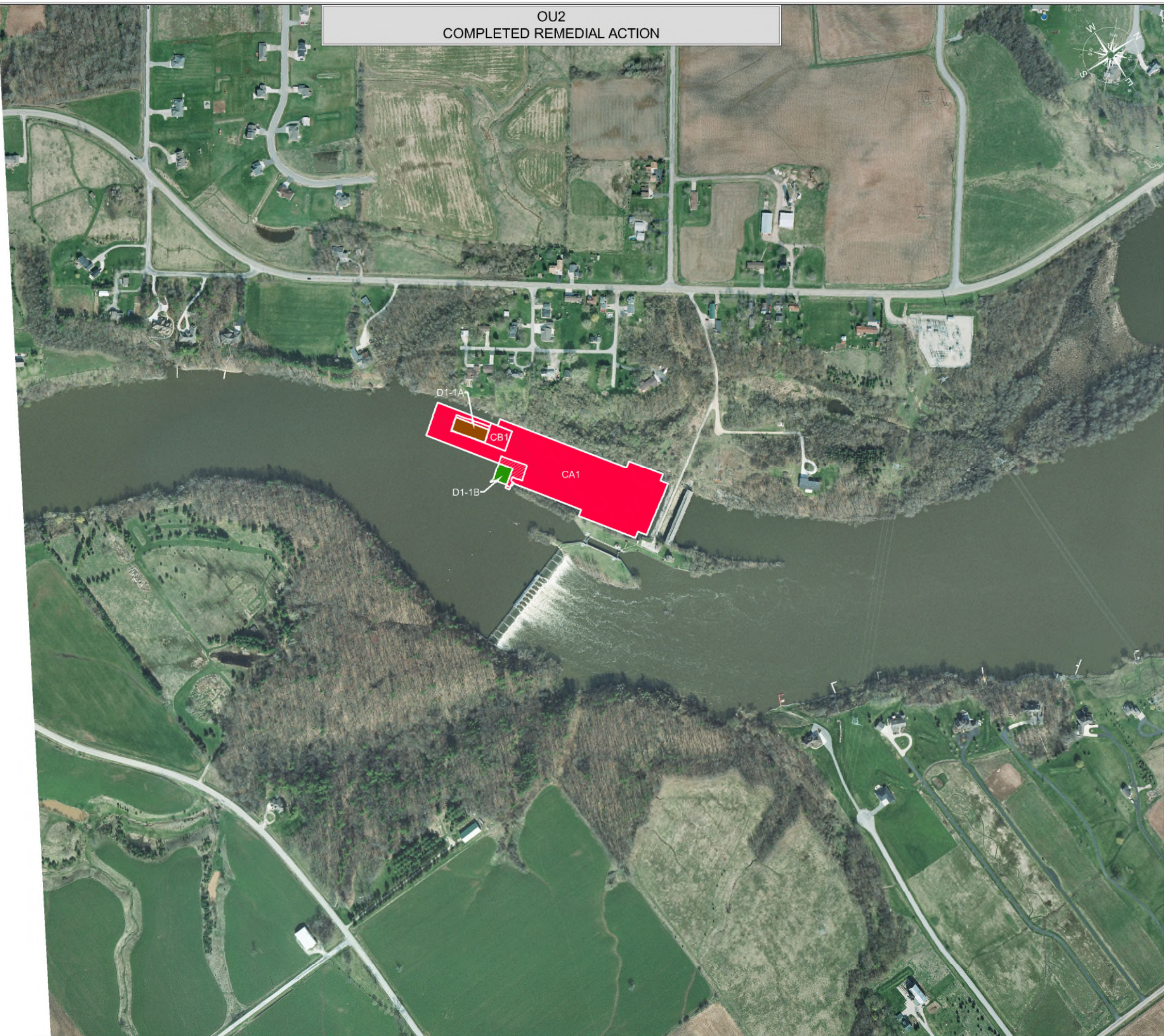


OU2  
COMPLETED REMEDIAL ACTION



LEGEND

- No Action Required
- Primary Dredge - No Further Action
- Primary Dredge - Residual Sand Cover
- Primary Sand Cover
- Primary/Residual Dredge and Cap A1 or B1
- Primary Cap A1 or B1
- Primary/Residual Dredge and Cap A2 or B2
- Primary Cap A2 or B2
- Primary/Residual Dredge and Cap A3 or B3
- Primary Cap A3 or B3
- Primary/Residual Dredge and Cap C
- Primary Cap C



SCALE (1" = 500')



NOTES

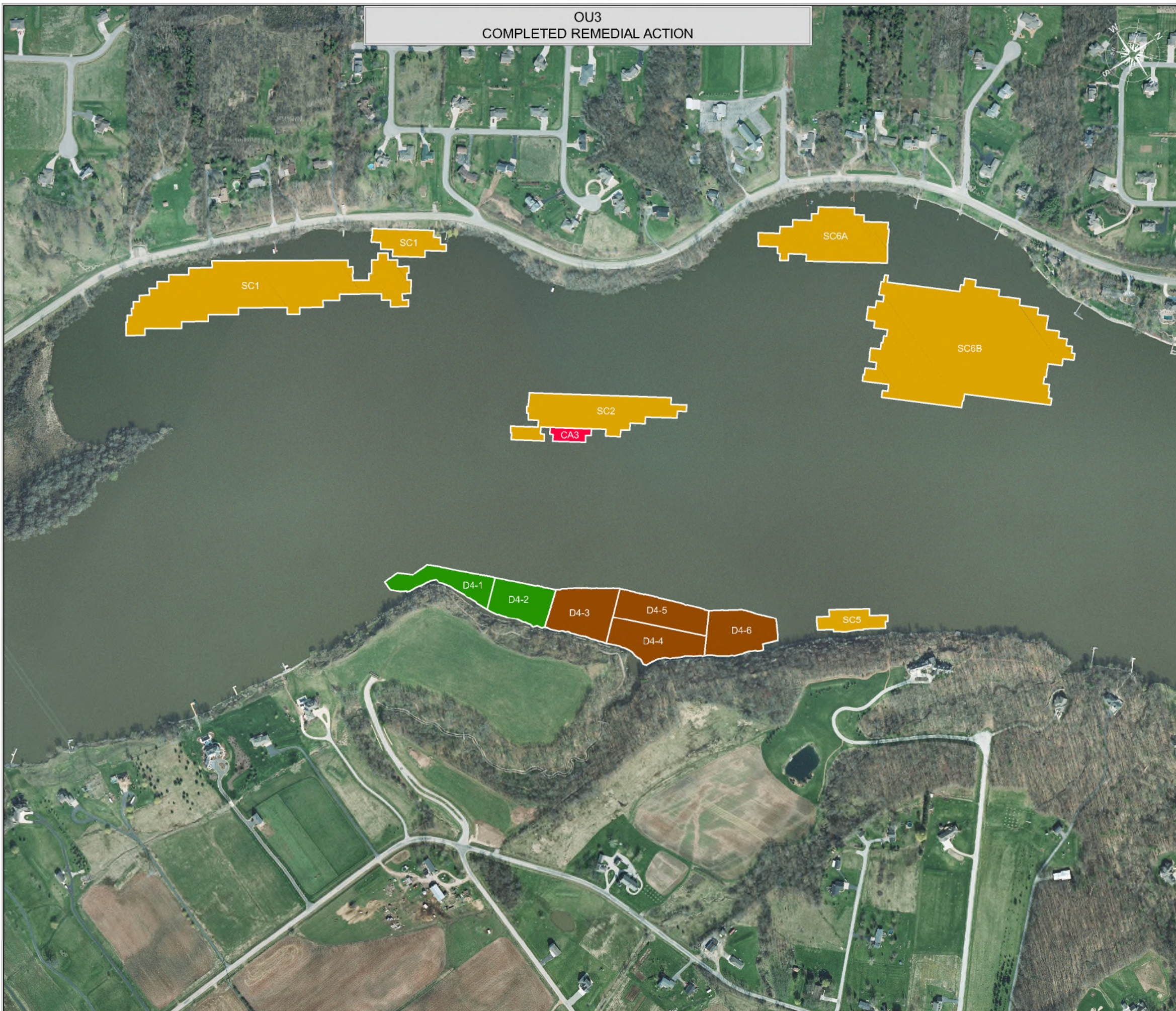
THIS DOCUMENT IS THE PROPERTY OF LOWER FOX RIVER REMEDIATION LLC PREPARED BY TETRA TECH EC, INC. (TTEC), AND IS PROVIDED UPON THE CONDITION THAT IT WILL NOT BE REPRODUCED, COPIED, OR ISSUED TO A THIRD PARTY. IT IS PROVIDED TO BE USED SOLELY FOR THE ORIGINAL INTENDED PURPOSE, AND SOLELY FOR THE EXECUTION OR REVIEW OF THE ENGINEERING AND CONSTRUCTION OF THE SUBJECT PROJECT.

**TETRA TECH EC, INC.**  
 1611 STATE STREET  
 GREEN BAY, WI 54304  
 TEL: (920) 445 - 0720 FAX: (920) 445 - 0719

CAD FILE: Completed RA Summary OU2 - OU5 R1.dwg  
 DRAWN BY: DOUG.FRISQUE  
 DATE: November 9, 2017  
 LAST REVISED: June 26, 2018  
 CHECKED BY: REG



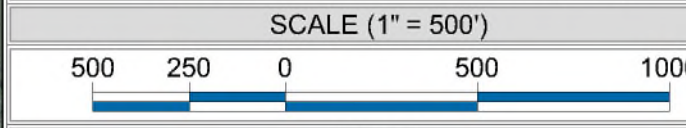




OU3  
COMPLETED REMEDIAL ACTION

LEGEND

- No Action Required
- Primary Dredge - No Further Action
- Primary Dredge - Residual Sand Cover
- Primary Sand Cover
- Primary/Residual Dredge and Cap A1 or B1
- Primary Cap A1 or B1
- Primary/Residual Dredge and Cap A2 or B2
- Primary Cap A2 or B2
- Primary/Residual Dredge and Cap A3 or B3
- Primary Cap A3 or B3
- Primary/Residual Dredge and Cap C
- Primary Cap C



NOTES

THIS DOCUMENT IS THE PROPERTY OF LOWER FOX RIVER REMEDIATION LLC PREPARED BY TETRA TECH EC, INC. (TTEC), AND IS PROVIDED UPON THE CONDITION THAT IT WILL NOT BE REPRODUCED, COPIED, OR ISSUED TO A THIRD PARTY. IT IS PROVIDED TO BE USED SOLELY FOR THE ORIGINAL INTENDED PURPOSE, AND SOLELY FOR THE EXECUTION OR REVIEW OF THE ENGINEERING AND CONSTRUCTION OF THE SUBJECT PROJECT.

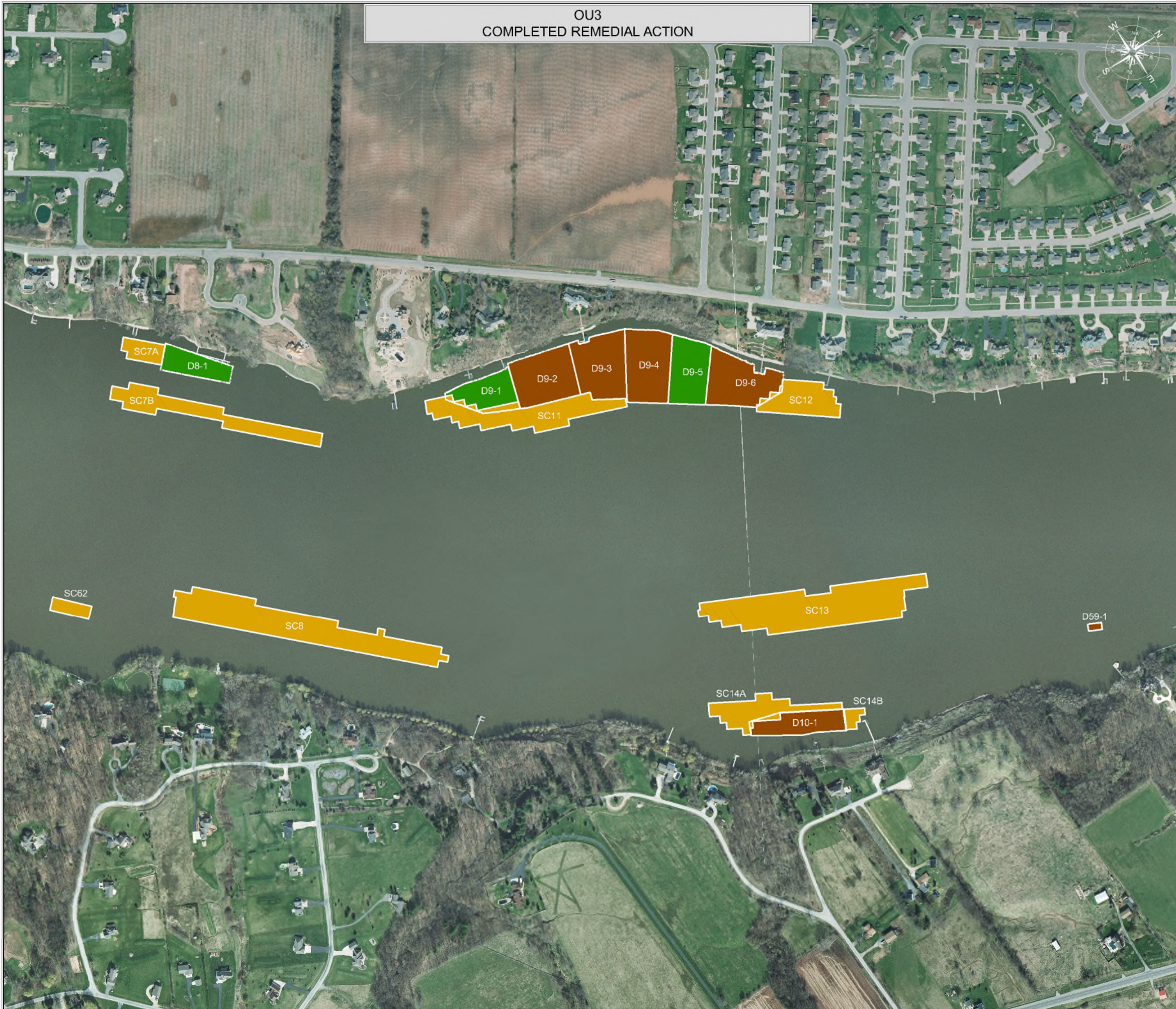
**TETRA TECH EC, INC.**  
 1611 STATE STREET  
 GREEN BAY, WI 54304  
 TEL: (920) 445 - 0720 FAX: (920) 445 - 0719

CAD FILE: Completed RA Summary OU2 - OU5 R1.dwg  
 DRAWN BY: DOUG.FRISQUE  
 DATE: November 9, 2017  
 LAST REVISED: June 26, 2018  
 CHECKED BY: REG





OU3  
COMPLETED REMEDIAL ACTION



LEGEND

- No Action Required
- Primary Dredge - No Further Action
- Primary Dredge - Residual Sand Cover
- Primary Sand Cover
- Primary/Residual Dredge and Cap A1 or B1
- Primary Cap A1 or B1
- Primary/Residual Dredge and Cap A2 or B2
- Primary Cap A2 or B2
- Primary/Residual Dredge and Cap A3 or B3
- Primary Cap A3 or B3
- Primary/Residual Dredge and Cap C
- Primary Cap C



SCALE (1" = 500')



NOTES

THIS DOCUMENT IS THE PROPERTY OF LOWER FOX RIVER REMEDIATION LLC PREPARED BY TETRA TECH EC, INC. (TTEC), AND IS PROVIDED UPON THE CONDITION THAT IT WILL NOT BE REPRODUCED, COPIED, OR ISSUED TO A THIRD PARTY. IT IS PROVIDED TO BE USED SOLELY FOR THE ORIGINAL INTENDED PURPOSE, AND SOLELY FOR THE EXECUTION OR REVIEW OF THE ENGINEERING AND CONSTRUCTION OF THE SUBJECT PROJECT.

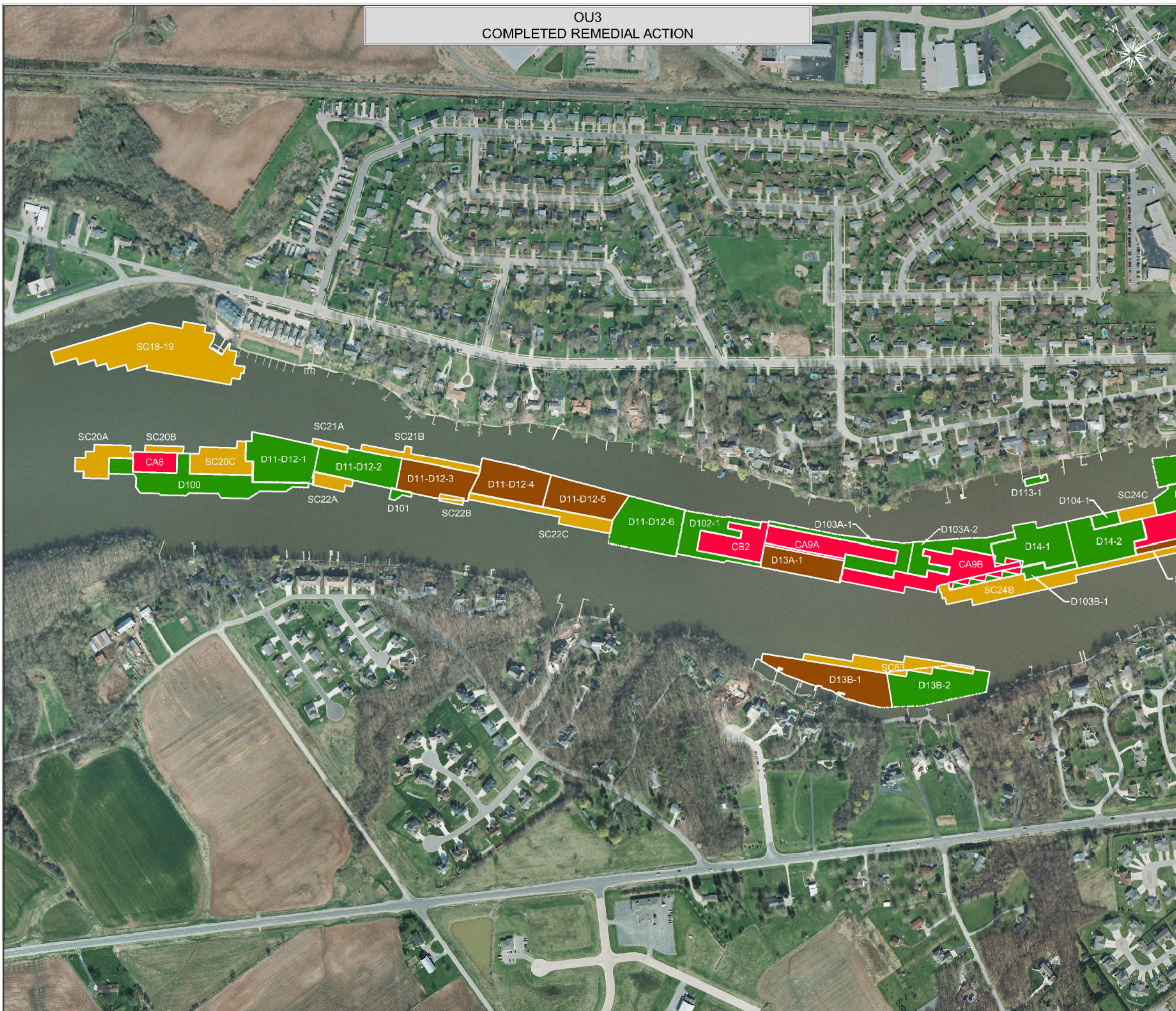
**TETRA TECH EC, INC.**  
 1611 STATE STREET  
 GREEN BAY, WI 54304  
 TEL: (920) 445 - 0720 FAX: (920) 445 - 0719

CAD FILE: Completed RA Summary OU2 - OU5 R1.dwg  
 DRAWN BY: DOUG.FRISQUE  
 DATE: November 9, 2017  
 LAST REVISED: June 26, 2018  
 CHECKED BY: REG





OU3  
COMPLETED REMEDIAL ACTION



LEGEND

- No Action Required
- Primary Dredge - No Further Action
- Primary Dredge - Residual Sand Cover
- Primary Sand Cover
- Primary/Residual Dredge and Cap A1 or B1
- Primary Cap A1 or B1
- Primary/Residual Dredge and Cap A2 or B2
- Primary Cap A2 or B2
- Primary/Residual Dredge and Cap A3 or B3
- Primary Cap A3 or B3
- Primary/Residual Dredge and Cap C
- Primary Cap C



SCALE (1" = 500')



NOTES

THIS DOCUMENT IS THE PROPERTY OF LOWER FOX RIVER REMEDIATION LLC PREPARED BY TETRA TECH EC, INC. (TTEC), AND IS PROVIDED UPON THE CONDITION THAT IT WILL NOT BE REPRODUCED, COPIED, OR ISSUED TO A THIRD PARTY. IT IS PROVIDED TO BE USED SOLELY FOR THE ORIGINAL INTENDED PURPOSE, AND SOLELY FOR THE EXECUTION OR REVIEW OF THE ENGINEERING AND CONSTRUCTION OF THE SUBJECT PROJECT.

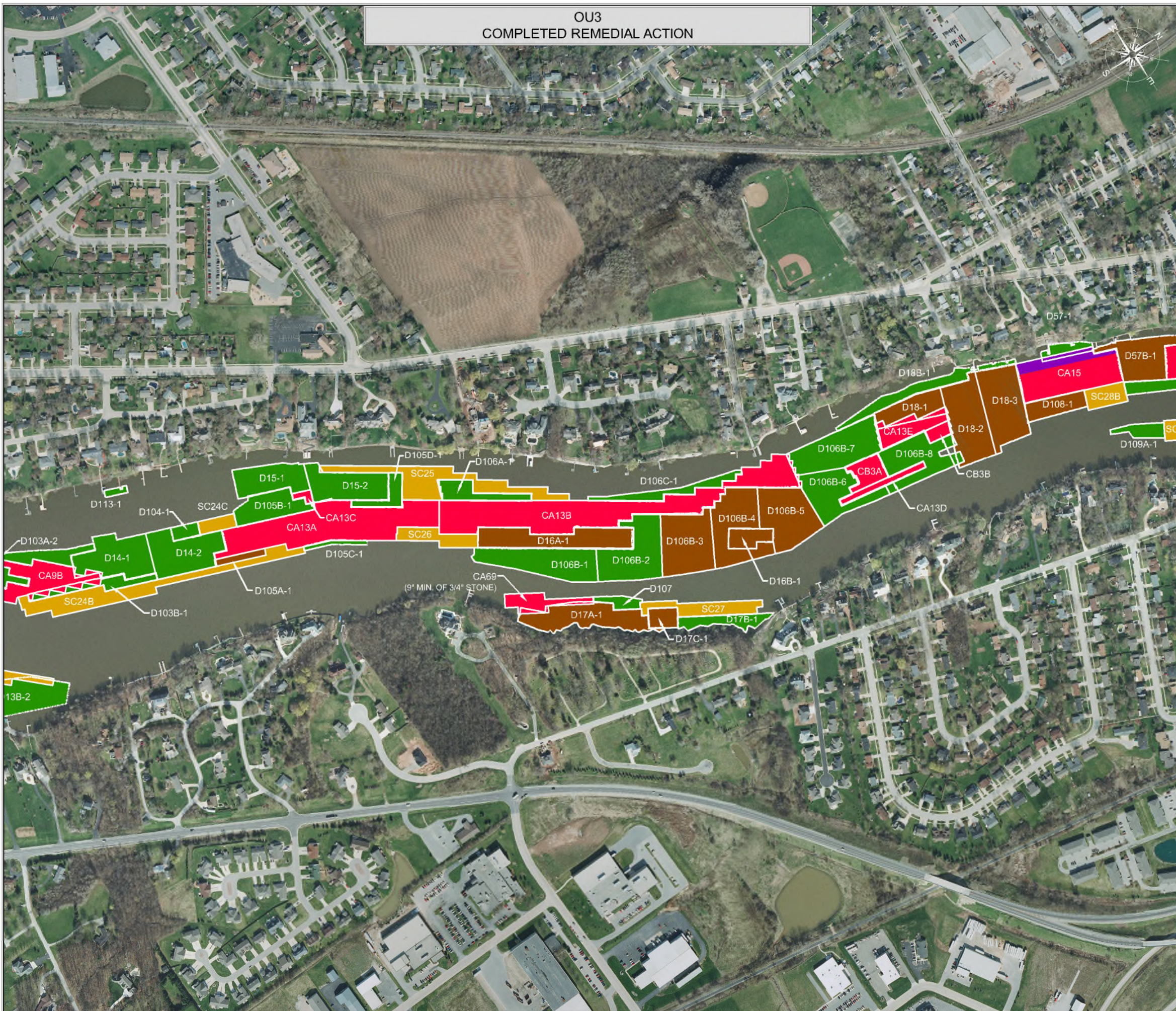
**TETRA TECH EC, INC.**  
 1611 STATE STREET  
 GREEN BAY, WI 54304  
 TEL: (920) 445 - 0720 FAX: (920) 445 - 0719

CAD FILE: Completed RA Summary OU2 - OU5 R1.dwg  
 DRAWN BY: DOUG.FRISQUE  
 DATE: November 9, 2017  
 LAST REVISED: June 26, 2018  
 CHECKED BY: REG





OU3  
COMPLETED REMEDIAL ACTION



LEGEND

- No Action Required
- Primary Dredge - No Further Action
- Primary Dredge - Residual Sand Cover
- Primary Sand Cover
- Primary/Residual Dredge and Cap A1 or B1
- Primary/Residual Dredge and Cap A2 or B2
- Primary/Residual Dredge and Cap A3 or B3
- Primary/Residual Dredge and Cap C



SCALE (1" = 500')



NOTES

THIS DOCUMENT IS THE PROPERTY OF LOWER FOX RIVER REMEDIATION LLC PREPARED BY TETRA TECH EC, INC. (TTEC), AND IS PROVIDED UPON THE CONDITION THAT IT WILL NOT BE REPRODUCED, COPIED, OR ISSUED TO A THIRD PARTY. IT IS PROVIDED TO BE USED SOLELY FOR THE ORIGINAL INTENDED PURPOSE, AND SOLELY FOR THE EXECUTION OR REVIEW OF THE ENGINEERING AND CONSTRUCTION OF THE SUBJECT PROJECT.

**TETRA TECH EC, INC.**  
 1611 STATE STREET  
 GREEN BAY, WI 54304  
 TEL: (920) 445 - 0720 FAX: (920) 445 - 0719

CAD FILE: Completed RA Summary OU2 - OU5 R1.dwg  
 DRAWN BY: DOUG.FRISQUE  
 DATE: November 9, 2017  
 LAST REVISED: June 26, 2018  
 CHECKED BY: REG



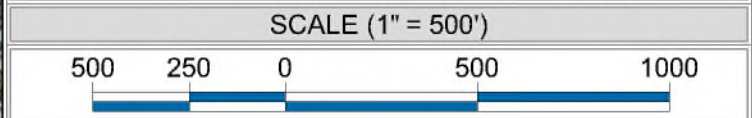


OU3  
COMPLETED REMEDIAL ACTION



LEGEND

- No Action Required
- Primary Dredge - No Further Action
- Primary Dredge - Residual Sand Cover
- Primary Sand Cover
- Primary/Residual Dredge and Cap A1 or B1
- Primary Cap A1 or B1
- Primary/Residual Dredge and Cap A2 or B2
- Primary Cap A2 or B2
- Primary/Residual Dredge and Cap A3 or B3
- Primary Cap A3 or B3
- Primary/Residual Dredge and Cap C
- Primary Cap C



NOTES

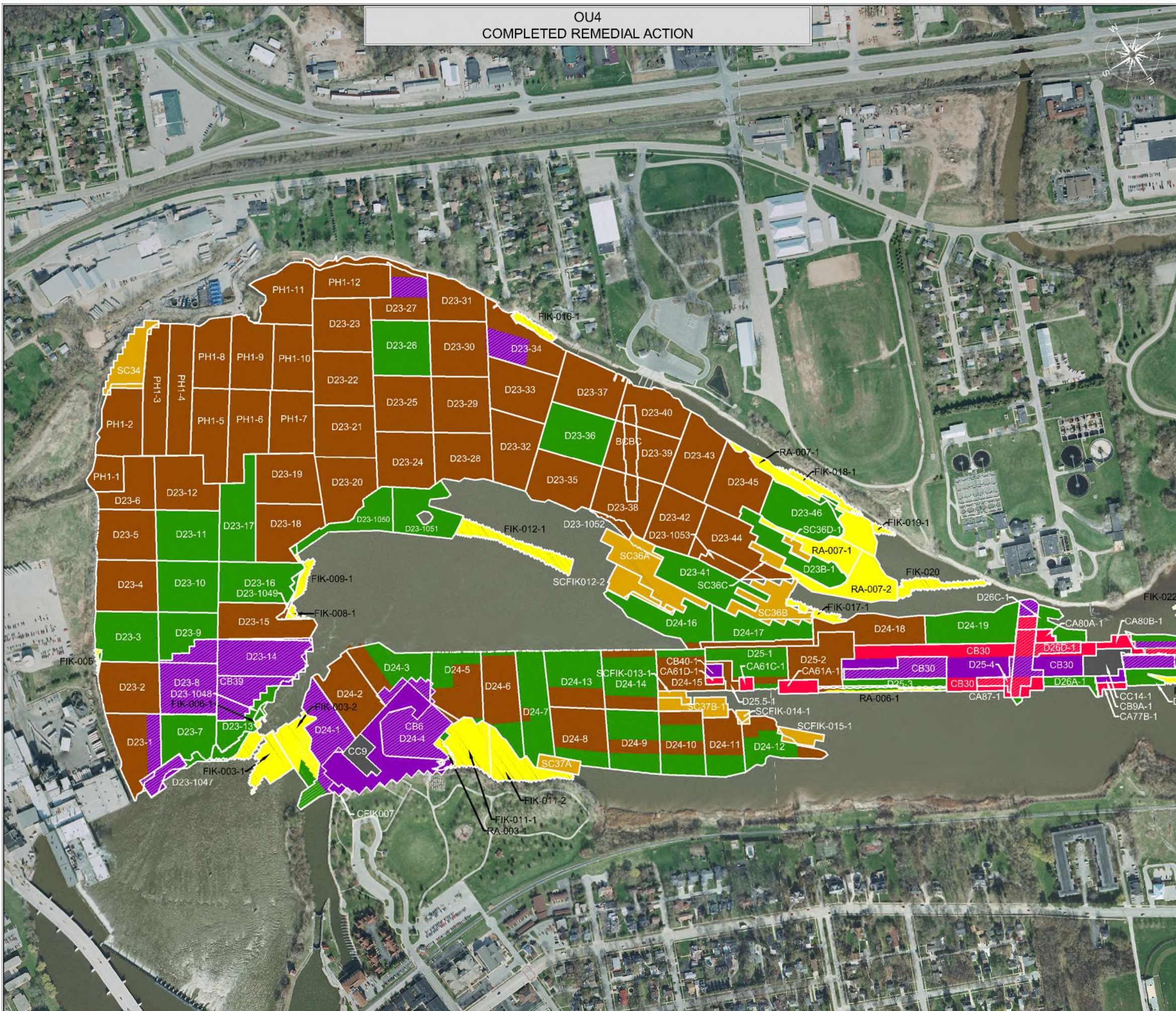
THIS DOCUMENT IS THE PROPERTY OF LOWER FOX RIVER REMEDIATION LLC PREPARED BY TETRA TECH EC, INC. (TTEC), AND IS PROVIDED UPON THE CONDITION THAT IT WILL NOT BE REPRODUCED, COPIED, OR ISSUED TO A THIRD PARTY. IT IS PROVIDED TO BE USED SOLELY FOR THE ORIGINAL INTENDED PURPOSE, AND SOLELY FOR THE EXECUTION OR REVIEW OF THE ENGINEERING AND CONSTRUCTION OF THE SUBJECT PROJECT.

CAD FILE: Completed RA Summary OU2 - OU5 R1.dwg  
 DRAWN BY: DOUG.FRISQUE  
 DATE: November 9, 2017  
 LAST REVISED: June 26, 2018  
 CHECKED BY: REG  
 Sheet 6 of 11





OU4  
COMPLETED REMEDIAL ACTION

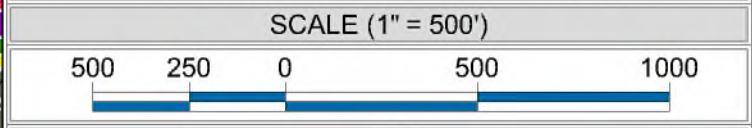


**LEGEND**

- No Action Required
- Primary Dredge - No Further Action
- Primary Dredge - Residual Sand Cover
- Primary Sand Cover
- Primary/Residual Dredge and Cap A1 or B1
- Primary Cap A1 or B1
- Primary/Residual Dredge and Cap A2 or B2
- Primary Cap A2 or B2
- Primary/Residual Dredge and Cap A3 or B3
- Primary Cap A3 or B3
- Primary/Residual Dredge and Cap C
- Primary Cap C

OPERABLE UNIT    DREDGE AREA    DREDGE COMPLETION UNIT    DREDGE MANAGEMENT UNIT

— DREDGE COMPLETION UNIT (DCU)  
— DREDGE MANAGEMENT UNIT (DMU)



**NOTES**

THIS DOCUMENT IS THE PROPERTY OF LOWER FOX RIVER REMEDIATION LLC PREPARED BY TETRA TECH EC, INC. (TTEC), AND IS PROVIDED UPON THE CONDITION THAT IT WILL NOT BE REPRODUCED, COPIED, OR ISSUED TO A THIRD PARTY. IT IS PROVIDED TO BE USED SOLELY FOR THE ORIGINAL INTENDED PURPOSE, AND SOLELY FOR THE EXECUTION OR REVIEW OF THE ENGINEERING AND CONSTRUCTION OF THE SUBJECT PROJECT.

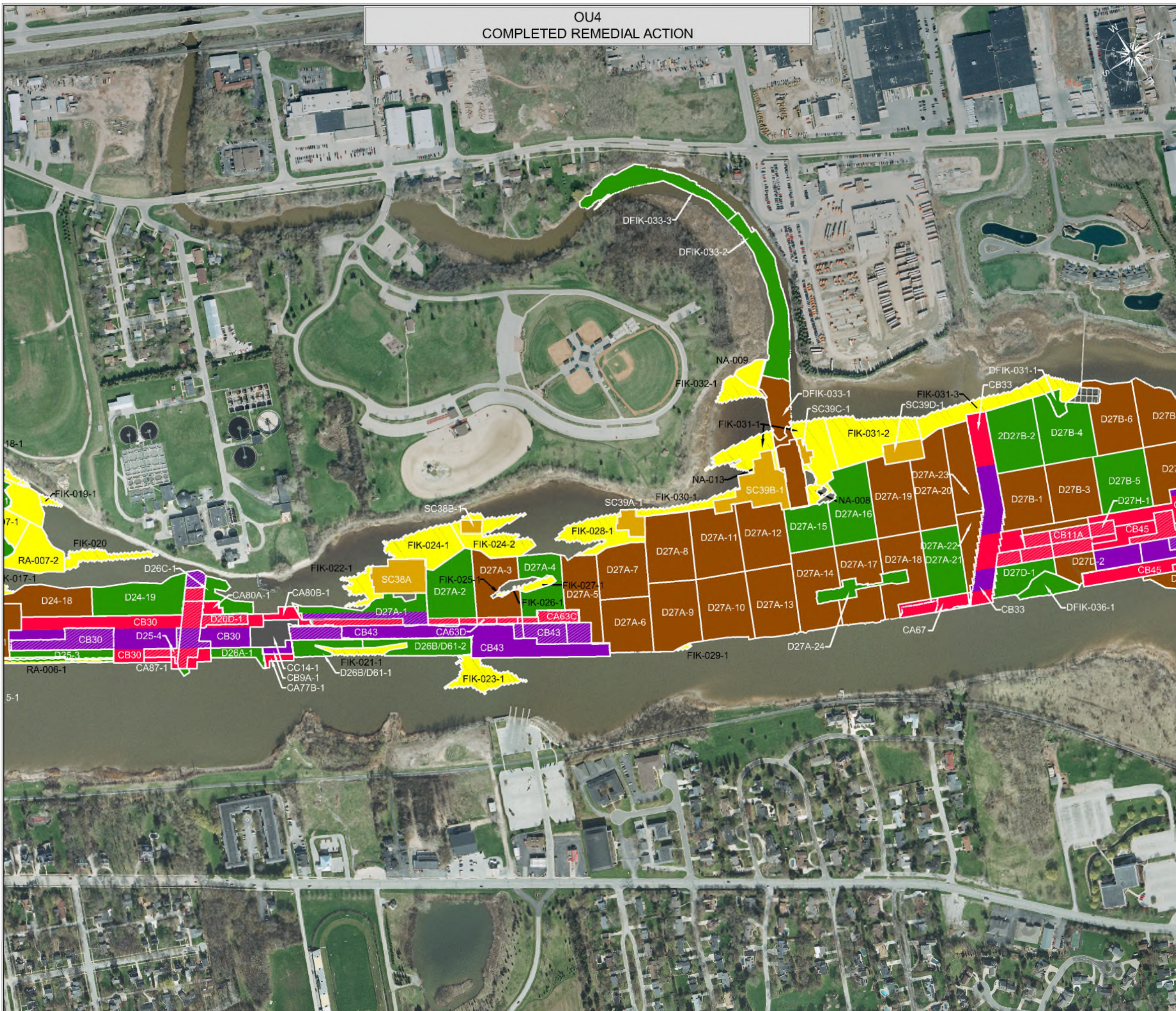
**TETRA TECH EC, INC.**  
 1611 STATE STREET  
 GREEN BAY, WI 54304  
 TEL: (920) 445 - 0720 FAX: (920) 445 - 0719

CAD FILE: Completed RA Summary OU2 - OU5 R1.dwg  
 DRAWN BY: DOUG.FRISQUE  
 DATE: November 9, 2017  
 LAST REVISED: June 26, 2018  
 CHECKED BY: REG

Sheet 7 of 11

LOWER FOX RIVER REMEDIATION LLC

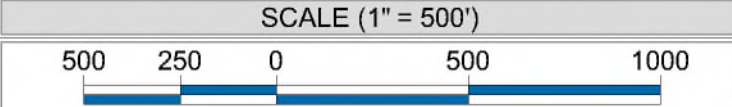




OU4  
COMPLETED REMEDIAL ACTION

LEGEND

- No Action Required
- Primary Dredge - No Further Action
- Primary Dredge - Residual Sand Cover
- Primary Sand Cover
- Primary/Residual Dredge and Cap A1 or B1
- Primary Cap A1 or B1
- Primary/Residual Dredge and Cap A2 or B2
- Primary Cap A2 or B2
- Primary/Residual Dredge and Cap A3 or B3
- Primary Cap A3 or B3
- Primary/Residual Dredge and Cap C
- Primary Cap C



NOTES

THIS DOCUMENT IS THE PROPERTY OF LOWER FOX RIVER REMEDIATION LLC PREPARED BY TETRA TECH EC, INC. (TTEC), AND IS PROVIDED UPON THE CONDITION THAT IT WILL NOT BE REPRODUCED, COPIED, OR ISSUED TO A THIRD PARTY. IT IS PROVIDED TO BE USED SOLELY FOR THE ORIGINAL INTENDED PURPOSE, AND SOLELY FOR THE EXECUTION OR REVIEW OF THE ENGINEERING AND CONSTRUCTION OF THE SUBJECT PROJECT.

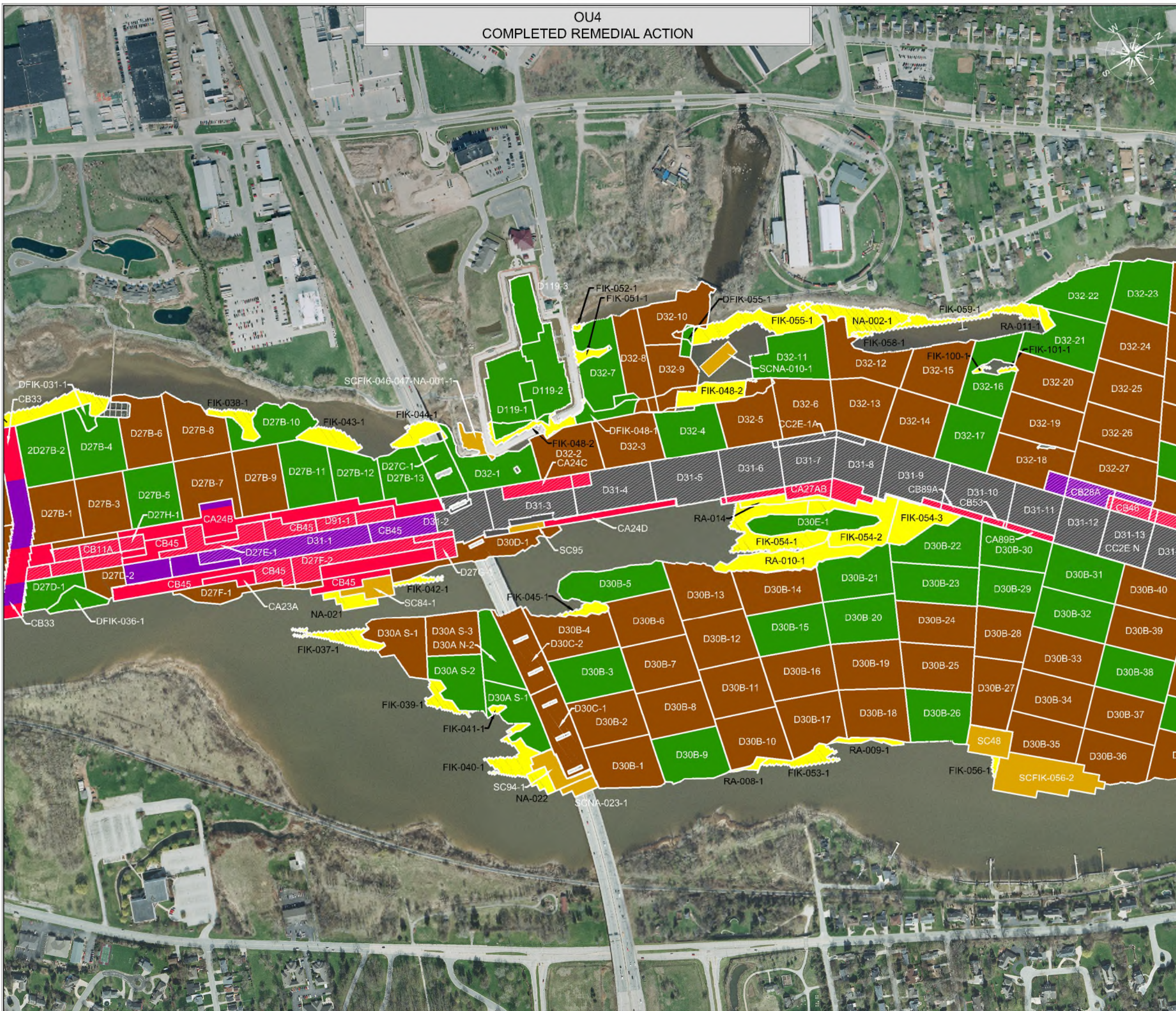
**TETRA TECH EC, INC.**  
 1611 STATE STREET  
 GREEN BAY, WI 54304  
 TEL: (920) 445 - 0720 FAX: (920) 445 - 0719

CAD FILE: Completed RA Summary OU2 - OU5 R1.dwg  
 DRAWN BY: DOUG.FRISQUE  
 DATE: November 9, 2017  
 LAST REVISED: June 26, 2018  
 CHECKED BY: REG

Sheet 8 of 11

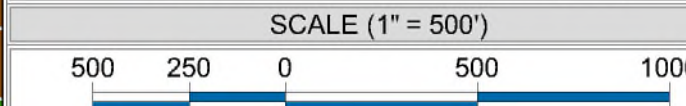


OU4  
COMPLETED REMEDIAL ACTION



LEGEND

- No Action Required
- Primary Dredge - No Further Action
- Primary Dredge - Residual Sand Cover
- Primary Sand Cover
- Primary/Residual Dredge and Cap A1 or B1
- Primary Cap A1 or B1
- Primary/Residual Dredge and Cap A2 or B2
- Primary Cap A2 or B2
- Primary/Residual Dredge and Cap A3 or B3
- Primary Cap A3 or B3
- Primary/Residual Dredge and Cap C
- Primary Cap C



NOTES

THIS DOCUMENT IS THE PROPERTY OF LOWER FOX RIVER REMEDIATION LLC PREPARED BY TETRA TECH EC, INC. (TTEC), AND IS PROVIDED UPON THE CONDITION THAT IT WILL NOT BE REPRODUCED, COPIED, OR ISSUED TO A THIRD PARTY. IT IS PROVIDED TO BE USED SOLELY FOR THE ORIGINAL INTENDED PURPOSE, AND SOLELY FOR THE EXECUTION OR REVIEW OF THE ENGINEERING AND CONSTRUCTION OF THE SUBJECT PROJECT.

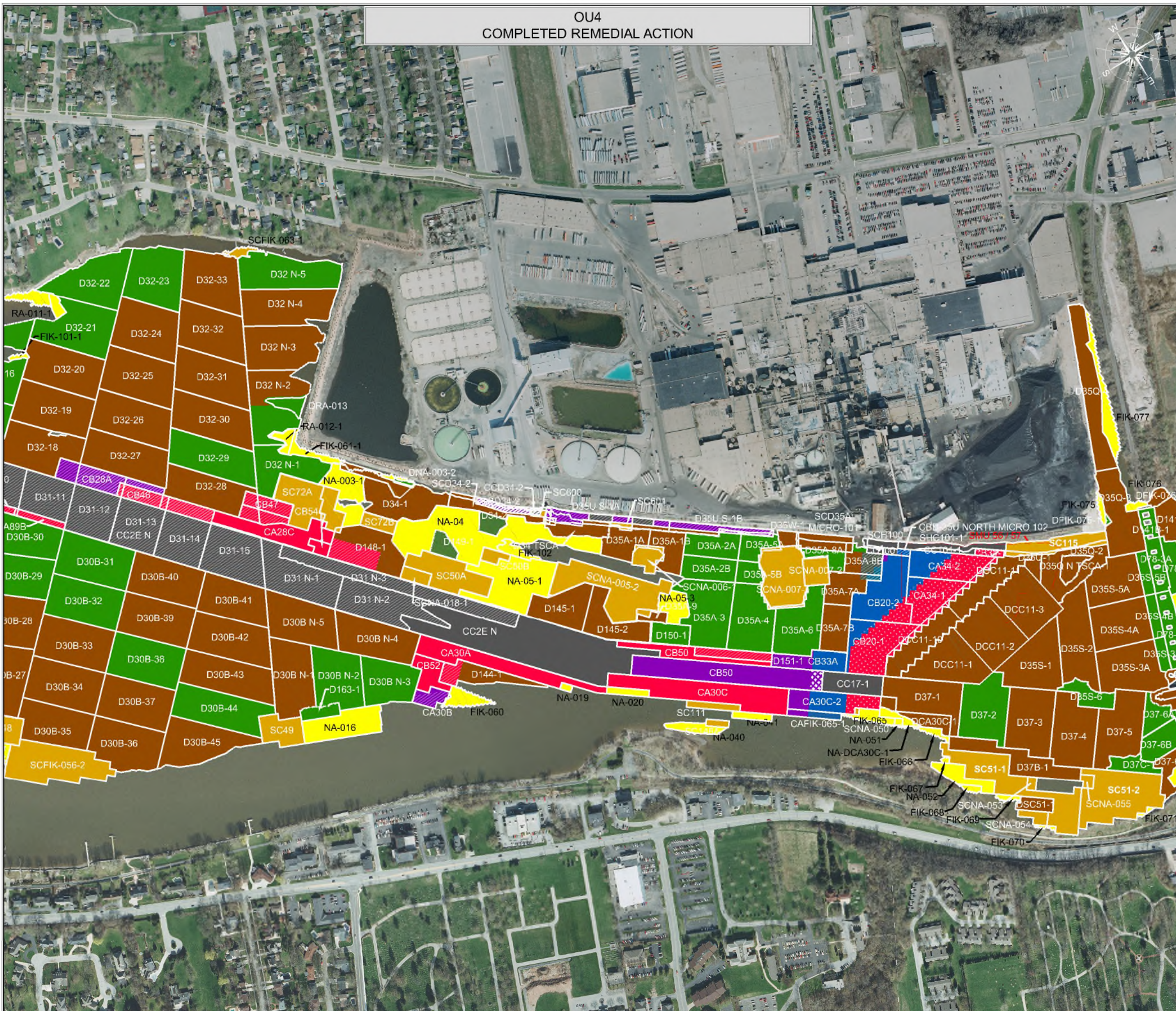
**TETRA TECH EC, INC.**  
 1611 STATE STREET  
 GREEN BAY, WI 54304  
 TEL: (920) 445 - 0720 FAX: (920) 445 - 0719

CAD FILE: Completed RA Summary OU2 - OU5 R1.dwg  
 DRAWN BY: DOUG.FRISQUE  
 DATE: November 9, 2017  
 LAST REVISED: June 26, 2018  
 CHECKED BY: REG



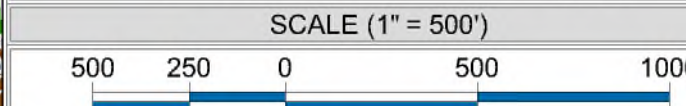


OU4  
COMPLETED REMEDIAL ACTION



LEGEND

- No Action Required
- Primary Dredge - No Further Action
- Primary Dredge - Residual Sand Cover
- Primary Sand Cover
- Primary/Residual Dredge and Cap A1 or B1
- Primary Cap A1 or B1
- Primary/Residual Dredge and Cap A2 or B2
- Primary Cap A2 or B2
- Primary/Residual Dredge and Cap A3 or B3
- Primary Cap A3 or B3
- Primary/Residual Dredge and Cap C
- Primary Cap C/Shoreline Cap
- Prop Wash Cap (QM1 & QM2)/S(M1)



NOTES

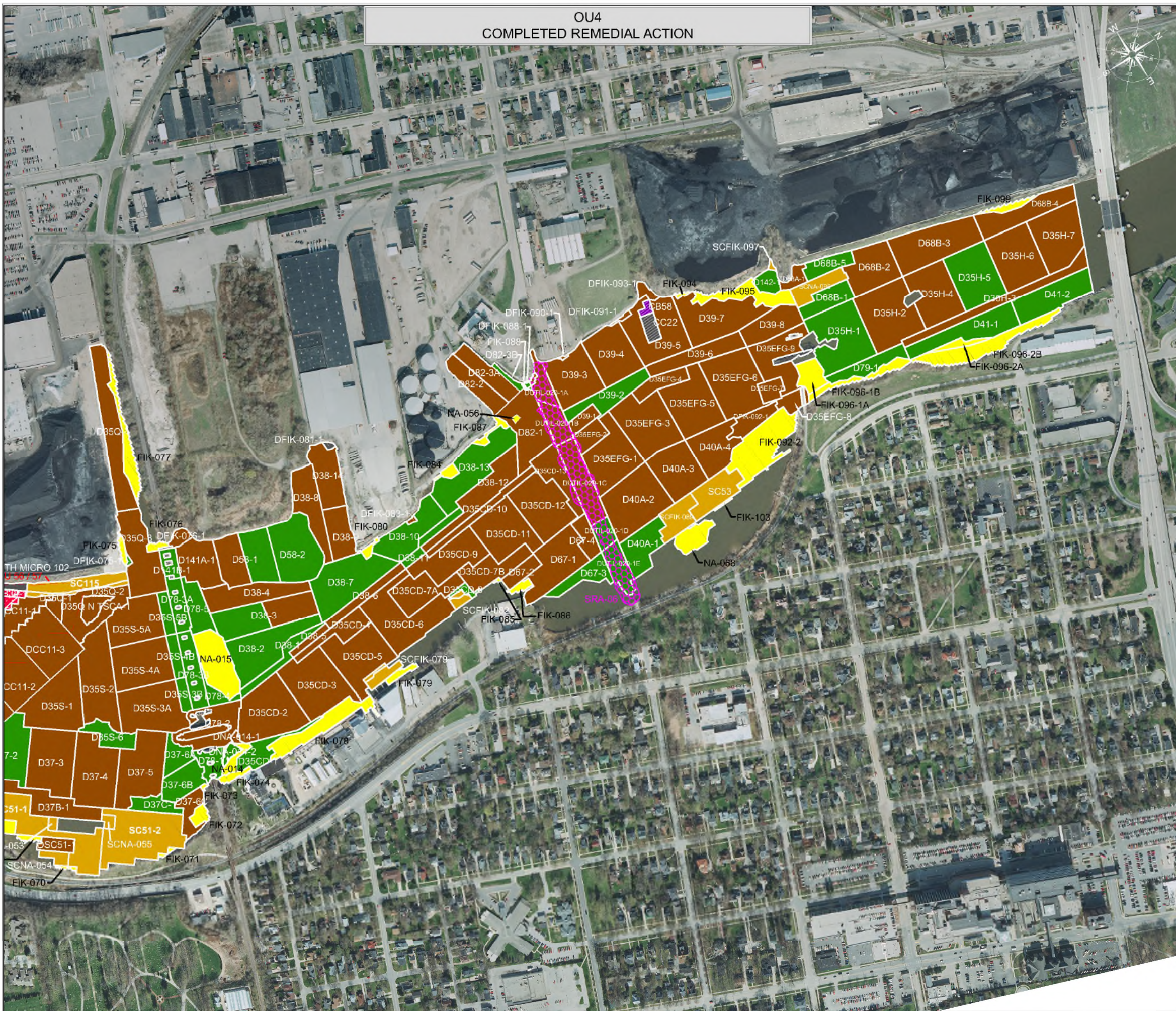
THIS DOCUMENT IS THE PROPERTY OF LOWER FOX RIVER REMEDIATION LLC PREPARED BY TETRA TECH EC, INC. (TTEC), AND IS PROVIDED UPON THE CONDITION THAT IT WILL NOT BE REPRODUCED, COPIED, OR ISSUED TO A THIRD PARTY. IT IS PROVIDED TO BE USED SOLELY FOR THE ORIGINAL INTENDED PURPOSE, AND SOLELY FOR THE EXECUTION OR REVIEW OF THE ENGINEERING AND CONSTRUCTION OF THE SUBJECT PROJECT.

**Tt TETRA TECH EC, INC.**  
1611 STATE STREET  
GREEN BAY, WI 54304  
TEL: (920) 445 - 0720 FAX: (920) 445 - 0719

CAD FILE: Completed RA Summary OU2 - OU5 R1.dwg  
DRAWN BY: DOUG.FRISQUE  
DATE: November 9, 2017  
LAST REVISED: June 26, 2018  
CHECKED BY: REG







**OU4**  
**COMPLETED REMEDIAL ACTION**


**LEGEND**

- No Action Required
- Primary Dredge - No Further Action
- Primary Dredge - Residual Sand Cover
- Primary Sand Cover
- Primary/Residual Dredge and Cap A1 or B1
- Primary Cap A1 or B1
- Primary/Residual Dredge and Cap A2 or B2
- Primary Cap A2 or B2
- Primary/Residual Dredge and Cap A3 or B3
- Primary Cap A3 or B3
- Primary/Residual Dredge and Cap C
- Primary Cap C
- SRA Cap

			
OPERABLE UNIT	DREDGE AREA	DREDGE COMPLETION UNIT	DREDGE MANAGEMENT UNIT


 DREDGE COMPLETION UNIT (DCU)  
 DREDGE MANAGEMENT UNIT (DMU)

**SCALE (1" = 500')**




**NOTES**

THIS DOCUMENT IS THE PROPERTY OF LOWER FOX RIVER REMEDIATION LLC PREPARED BY TETRA TECH EC, INC. (TTEC), AND IS PROVIDED UPON THE CONDITION THAT IT WILL NOT BE REPRODUCED, COPIED, OR ISSUED TO A THIRD PARTY. IT IS PROVIDED TO BE USED SOLELY FOR THE ORIGINAL INTENDED PURPOSE, AND SOLELY FOR THE EXECUTION OR REVIEW OF THE ENGINEERING AND CONSTRUCTION OF THE SUBJECT PROJECT.



**TETRA TECH EC, INC.**  
 1611 STATE STREET  
 GREEN BAY, WI 54304  
 TEL: (920) 445 - 0720 FAX: (920) 445 - 0719

CAD FILE: Completed RA Summary OU2 - OU5 R1.dwg  
 DRAWN BY: SHANE.NELSON  
 DATE: November 9, 2017  
 LAST REVISED: April 5, 2019  
 CHECKED BY: REG

  
**LOWER FOX RIVER REMEDIATION LLC**

Sheet 11 of 11

P:\\LICAD\\Field Engineering\\OU2 - OU5 Completed RA Summary\\Completed RA Summary OU2 - OU5 R1.dwg