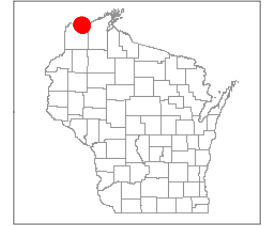


# Voluntary Public Access (VPA) Program: V439

For more information, contact: VPA-HIP Coordinator  
<http://dnr.wi.gov>, search "VPA"  
 Call 1-888-936-7463 from 7 a.m. - 10 p.m.

**FOOT TRAFFIC ONLY**  
**RESPECT LANDOWNER RIGHTS**  
**OBSERVE ALL POSTINGS**

## Douglas County



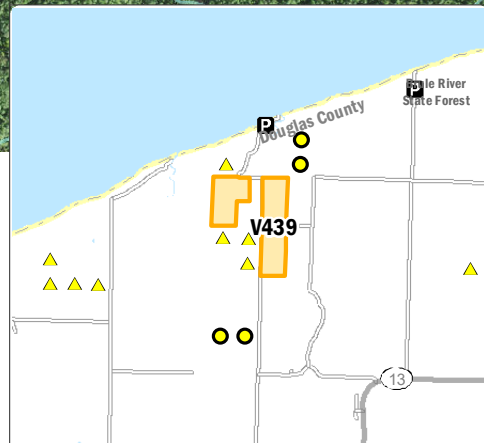
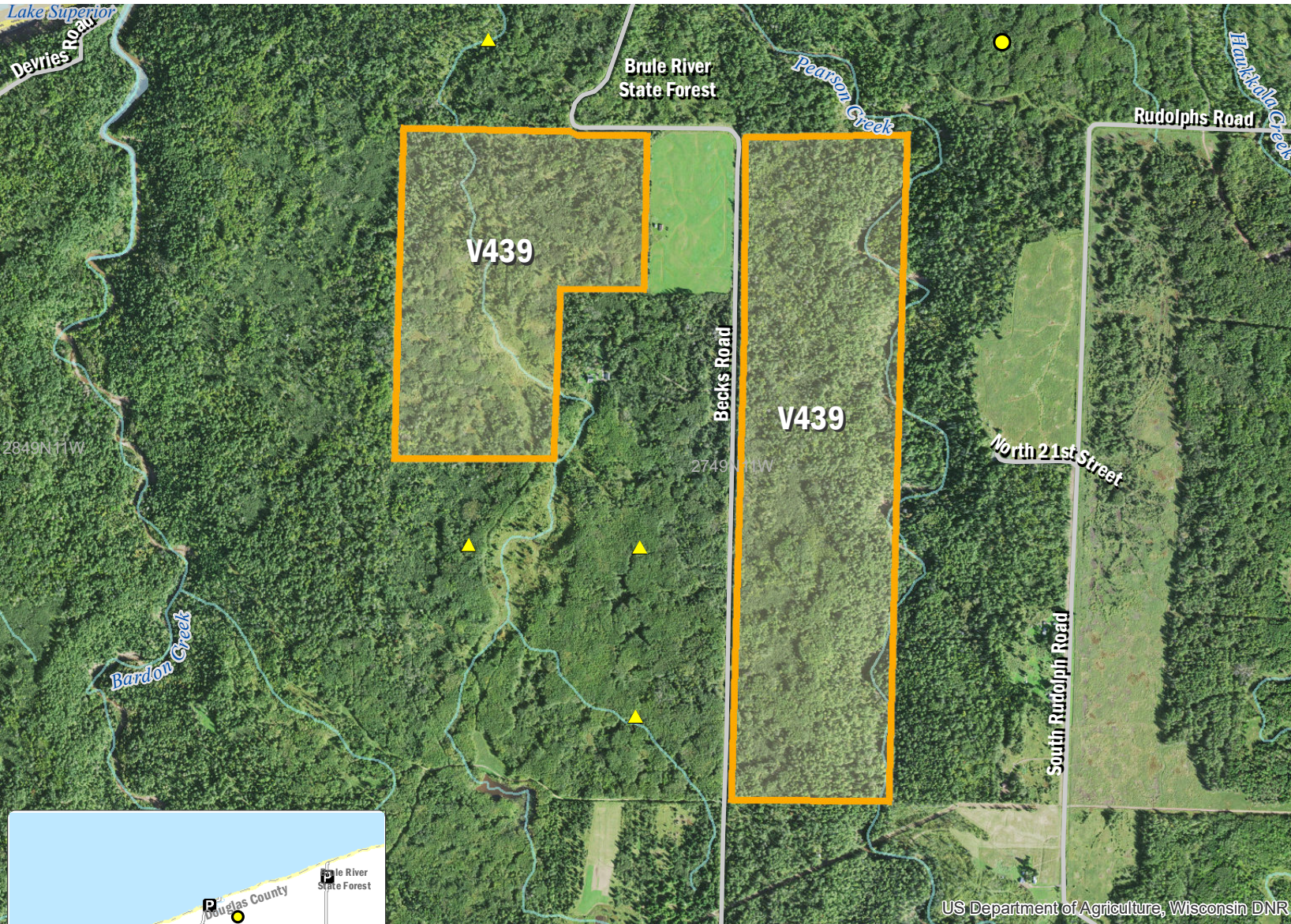
### Map Key

- Voluntary Public Access
- DNR Managed Land
- Open DNR Land
- DNR Public Access Easement
- P Parking Area
- State and National Trails
- Ice Age Trail
- State Trail
- ▲ Open MFL
- Open FCL
- Trout Streams
- CLASS I
- CLASS II
- CLASS III
- Closed/Restricted Areas
- County Forest

0 500 1,000  
ft



PUB CODE: VPA-V439\*-2021  
 MAP NUMBER: douglasv439  
 UPDATE DATE: 8/31/2021, ahr



#### PROPERTY DESCRIPTION

PLSS: T49N R11W S27 (Cloverland Twp),  
 GPS Coordinates (centroid): 46.700133, -91.73267

#### COVER TYPE (ACRES)

Agriculture: 0 Grassland-Wetland: 0 Forest: 256

#### DRIVING DIRECTIONS AND OTHER MAP NOTES

From the intersection of Hwy 53 and STH 13, travel east on STH 13 for 12.1 miles. Take Becks Rd north for 3.8 miles. Access to east parcel from Becks Rd. Access to west parcel from Becks Rd another 0.4 miles to northwest. Provides access to Pearson Creek.

DISCLAIMER: The data shown on this map have been obtained from various sources, and are of varying age, reliability and resolution. This map is not intended to be used for navigation, nor is this map an authoritative source of information about legal land ownership or public access. Users of this map should confirm the ownership of land through other means in order to avoid trespassing. No warranty, expressed or implied, is made regarding accuracy, applicability for a particular use, completeness, or legality of the information depicted on this map.

US Department of Agriculture, Wisconsin DNR