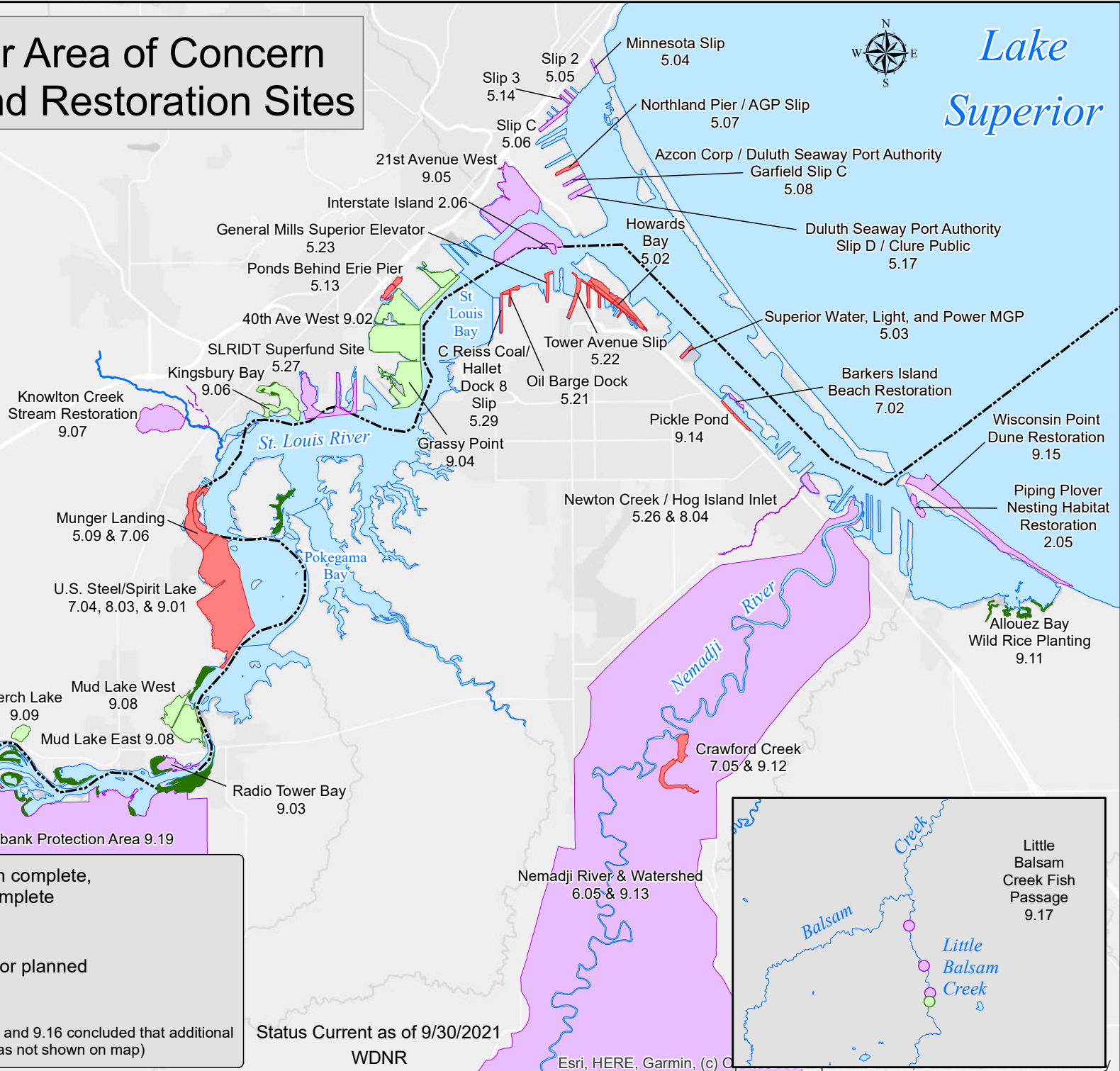
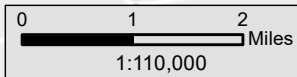
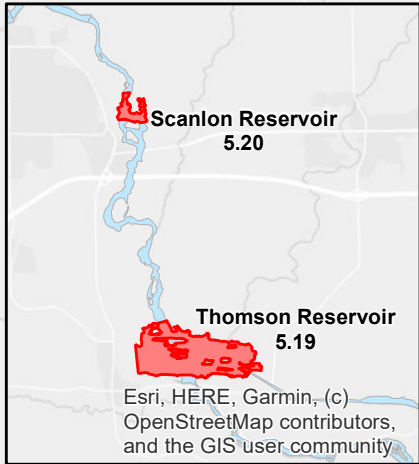


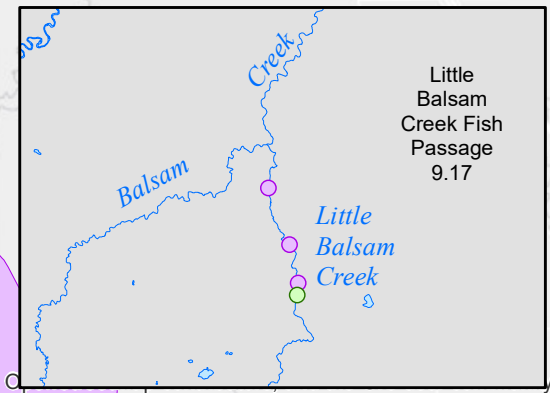
St. Louis River Area of Concern Remediation and Restoration Sites

Lake Superior



- Remediation or Restoration complete, monitoring underway or complete
- Remedial action proposed
- Restoration site underway or planned
- Wild Rice Planting 9.21

Projects 5.15, 5.16, 5.18, 5.24, 5.25, 5.28, and 9.16 concluded that additional action is not needed to address BUIs (areas not shown on map)



Status Current as of 9/30/2021
WDNR

Esri, HERE, Garmin, (c) O