

Deer Lymph Node Extraction

A Hunter's Guide To Collecting Lymph Nodes For CWD Testing

Wisconsin Department of Natural Resources
September 2021



Legal Disclaimer: It is your responsibility (the Participant) to follow the instructions provided by the Department of Natural Resources (DNR) when self-sampling for CWD testing. The DNR does not warrant that the samples you collect will be suitable for testing. If the DNR is not able to test a sample, the Participant will be notified. The Participant understands and fully accepts and assumes any and all risk and liability associated with self-sampling their deer. The Participant further releases the DNR, its employees, officers and authorized agents from any legal claims, liabilities, demands, costs, causes of action, damages, expenses, attorney's fees, losses and disputes of any nature whatsoever arising directly or indirectly from their participation in the Chronic Wasting Disease self-sampling program.

INTRODUCTION

Before you harvest your deer, plan ahead for CWD testing:

- » If you wish to shoulder-mount your deer, first take it to your taxidermist for caping and antler removal. Request that the taxidermist return the caped-out head to you and then follow these sampling instructions.
- » Watch the instructional video on the DNR website to know what to expect for proper sampling. Visit <https://dnr.wi.gov/tiny/806>.
- » Plan to take your sample as soon as you can after harvest. Finding lymph nodes is easiest on fresh deer. If possible, sample the same day as harvest.

NOTE: If you cannot sample your deer on the day of harvest, save the head with 5 inches of neck attached and store refrigerated (between 35° and 45° F) for up to 5 days or frozen if storing more than 5 days.

If you choose to freeze your deer head, it must be thawed before sampling. Thawing may take 1-2 days.

- » Do not attempt to sample a head shot deer.

Do not submit samples from a head shot deer, and instead, please contact local DNR staff for sampling assistance.

- » After Sampling: Save deer head with 5 inches of neck attached.

After you have submitted lymph nodes for sampling, keep the deer head frozen until you have received your test result.

If you don't receive a result because incorrect tissue was collected, you may still be able to collect the correct tissue and submit for testing. In these instances, DNR staff will contact you with further instructions.

KIT CONTENTS AND SAMPLING SUPPLIES

If anything is missing from your kit, contact your local wildlife biologist. Search for the staff directory at dnr.wi.gov, select your county and search 'wildlife biologist.'

Each CWD sampling kit contains:

- » Lymph node sampling, packaging, and drop-off instructions
- » Data sheet
- » 2 small zip-top baggies with barcodes
- » 2 medium zip-top baggies
- » CWD barcode tags (2) and zip ties
- » Orange card with sample barcode number

Keep this for your records.

You will need to supply the following:

- » Knife
- » Pliers, forceps or tweezers
- » Disposable gloves
- » Paper towel
- » Soap and water
- » 50/50 mixture of water and household bleach

State of Wisconsin
Dept. of Natural Resources
dnr.wi.gov

Data Collection Sheet
Form 2300-280 (R 4/21)

Notice: Information requested is required under Ch. 25, Wis. Stats., will be used for administrative purposes and may also be made available to requesters under Wisconsin's Open Records Law (ss. 19.31-19.39, Wis. Stats.).

Registration Information	Hunter Name on Harvest Auth. _____
	Hunter Daytime Phone (_____) _____
	Submitted CWD location data online (in Go Wild) <input type="checkbox"/> If box checked, stop here.
	Harvest Auth# _____
	DNR Customer ID# _____
	Station ID _____ Drop Off Date to Station _____ / ____ / ____
Kill Location	County of kill: _____ Full Landowner Name: _____
	Township # _____ N Range # _____ Section # _____ Quar _____ Section _____ NE (circle one): <input checked="" type="checkbox"/> E <input type="checkbox"/> W (circle one): <input type="checkbox"/> S <input type="checkbox"/> SE
	OR
	Lat _____ N Long _____ W
Location Info (Road intersections, address, etc.)	

Age of _____

HUNTERS - KEEP THIS CARD
CWD Barcode Number
118,993

118,993

118,993

STEP 1: DEER REGISTRATION AND DATA ENTRY

- » Register your harvested deer.

Register online at gamereg.wi.gov or by phone at 844-426-3734.

- » Tell us about your deer:

Option 1: Online Form

- » Follow the link in your Go Wild registration confirmation email to fill in your information electronically.
- » The online form automatically fills in your name, phone number, customer ID, harvest authorization number and registration confirmation number.
- » Enter **7403** when asked for **station ID number**.
- » Select the harvest location using the interactive map.
- » Follow remaining prompts to complete the form.
- » Fill in your name and phone number on the paper form. Check the box for the online form and return it to the plastic bag.

Keeping your contact information with your sample makes it easier to contact you with any questions during the testing process.

Enter the barcode number from the barcode tag in your data kit.

Then answer the questions about your deer.

J. HUNTER - DNR 111-1111-1111

Tag/Harvest Authorization Number

Confirmation Number : W11-1111-1111

CWD Barcode Number

Confirm CWD Barcode Number

CWD Sampling Station ID Number

Type of Deer Harvested

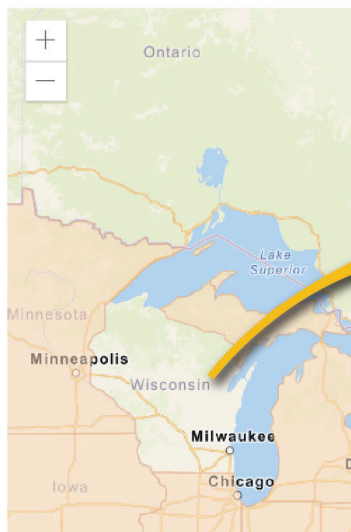
Male Female

If antlered:

Please choose...

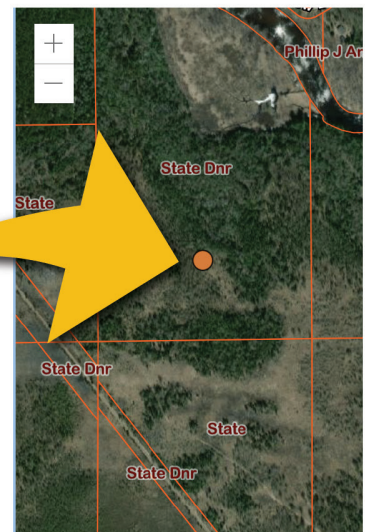
Scroll down to enter your harvest location. The map will open to the county where the deer was registered.

Select your harvest location on the map. Your selection must be within Wisconsin.



Zoom in on the map until you see satellite imagery and landowner names. Tap the location where you harvested your deer.

Select your harvest location on the map. Your selection must be within Wisconsin.



STEP 2: LYMPH NODE REMOVAL

Personal Protective Equipment

Put on clean, disposable gloves and take care when handling household bleach.

Clean And Disinfect

- » Clean all equipment with soap and water to remove any dirt or blood. Then rinse with water.
- » We recommend that you disinfect equipment after cleaning:
 - Soak non-steel items in a 50/50 mix of bleach and water for one hour.
 - Soak steel items in a 50/50 mix of bleach and water for five minutes.

Set Up Your Work Area

- » Have the small and medium zip-top baggies nearby.
- » Position the deer on its back so that the underside of the neck faces upwards.
- » The edge of a tailgate allows the deer's head to droop slightly, giving a better angle to expose the lymph nodes.



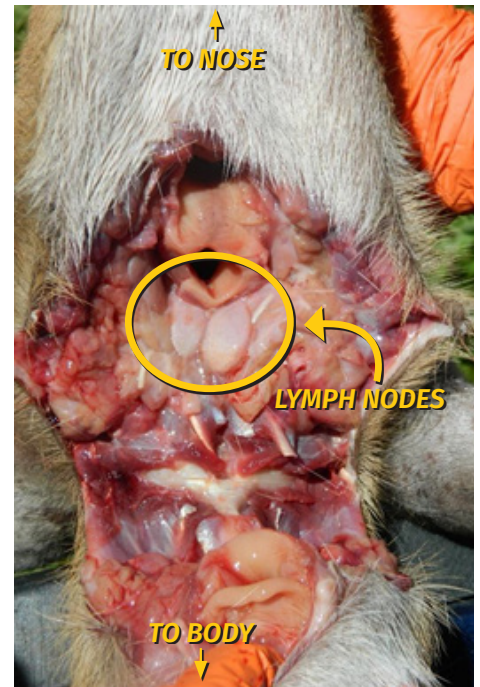
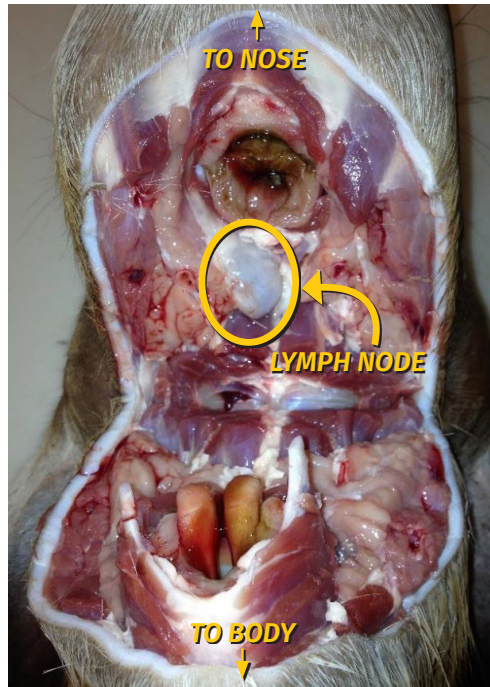
Make Your Incision

- » Starting at the nose end, use your index and middle fingers to feel down the center of the deer's lower jaw until you feel a rigid bump.
- » There is a void space in front of the bump where you can press down without resistance. Make your first cut here.
- » Cut into the neck, angling toward one side of the jaw, continuing all the way through the throat until you reach the backbone. Repeat on the other side of the jaw.

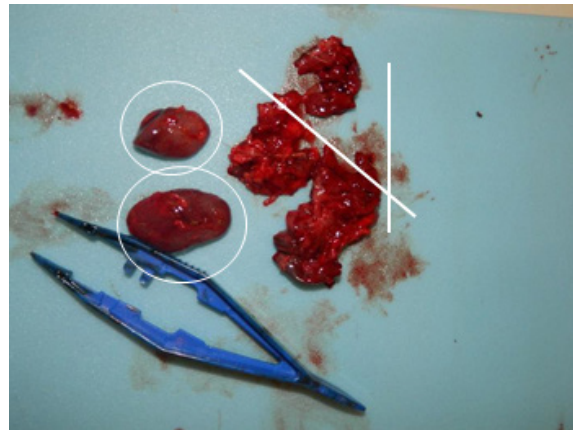
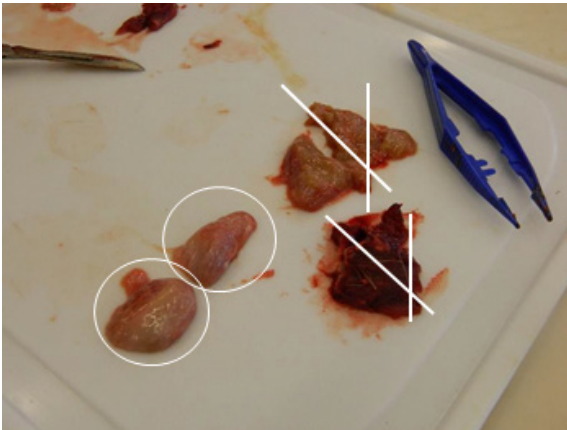


Locate The Retropharyngeal Lymph Nodes

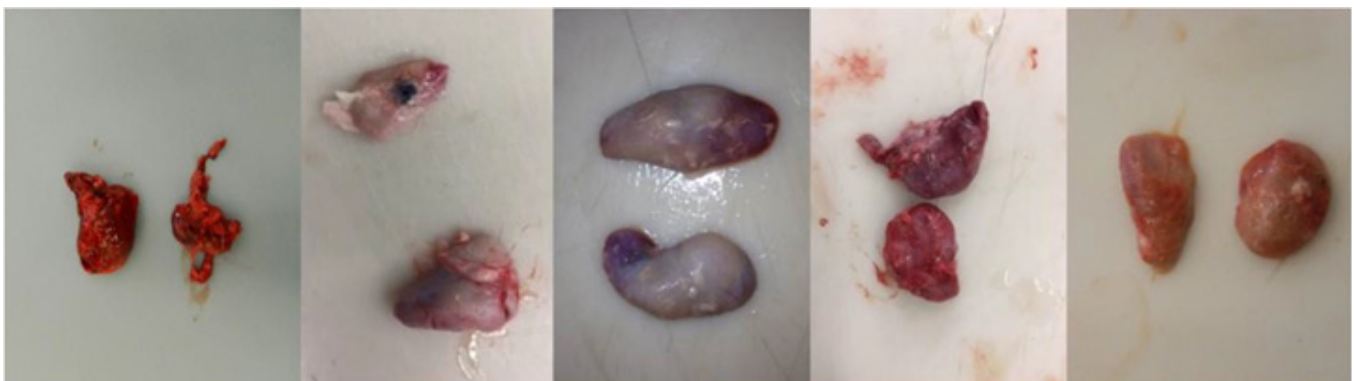
- » The two lymph nodes lie below the esophagus and trachea.
- » If you can't see the lymph nodes after the first cut, continue to cut away tissue moving toward the nose.
- » Be careful not to remove lymph nodes close to the skin. These will not work for CWD testing.



- » Lymph nodes are bean-shaped and can be found near blood clots or arteries.



- » Lymph nodes vary in color and size. The tissue is usually glossy and holds its shape when pressed.



Remove Lymph Nodes

- » Grasp one lymph node with your pliers, forceps or tweezers while using your knife to cut away the connective tissue.



- » It is okay if you cut into the lymph node in this process. It will not affect your sample.



- » Repeat the process to remove the other lymph node.

STEP 3: PREPARE YOUR SAMPLE FOR DROP-OFF

- » Place one lymph node in each of the small zip-top baggies with barcode labels and seal them shut.
- » Then place each small baggie inside a medium zip-top baggie and seal them shut. The second bag prevents the sample from leaking onto the data sheet.
- » Place both double-bagged lymph node samples inside the data kit with the paper data sheet.
- » Keep the orange barcode tag from the data kit for your records. You can use the barcode number to look up your CWD results.
- » Keep your samples refrigerated until you can drop them off. If you must wait more than five days, freeze your samples until you can drop them off.



STEP 4: CLEAN UP AND DISPOSAL

Save Your Deer Head

- » To increase your chances of receiving a result, cut off and save your deer's head with 5 inches of neck attached and freeze it. If incorrect tissue was collected and sent in for testing, DNR staff will contact you with further instructions.
- » Attach one white barcode tag to your deer's ear with a ziptie. Attach the other white barcode tag to the bag you use to store the head.



Clean And Disinfect

- » Clean all sampling equipment with soap and water to remove hair, blood and dirt and rinse with water.
- » Soak non-steel items in a 50/50 mix of bleach and water for one hour.
- » Soak steel items in a 50/50 mix of bleach and water for five minutes.
- » Dispose of gloves and used paper towel in your regular garbage.

STEP 5: RETURN YOUR SAMPLE

- » Return your sample to the DNR as soon as possible for fastest results.

Option 1:

Drop off samples at a nearby CWD kiosk. Visit the DNR website to find a location near you:

dnr.wi.gov/tiny/806

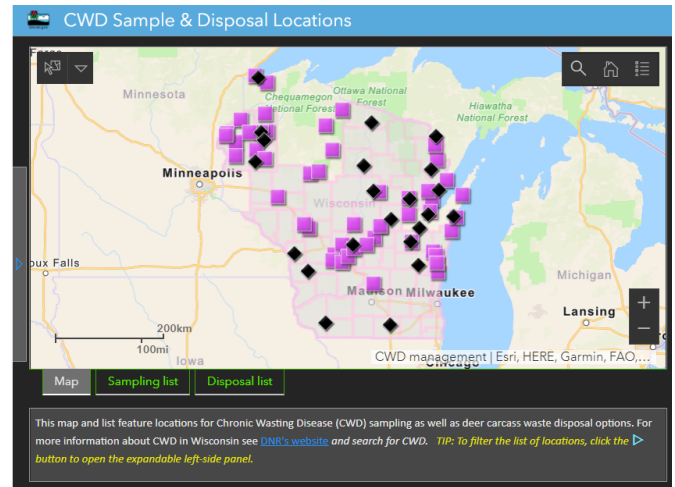


Option 2:

Contact your local wildlife biologist or point of contact to arrange drop-off instructions.

STEP 6: GET YOUR TEST RESULTS

- » Find your results in **your Go Wild harvest history** as soon as they're available. Or look up results using your orange barcode: Visit dnr.wi.gov and search "CWD Results."
- » We also send results to the email address in your Go Wild account or by mail if you do not have an email.



The DNR's interactive map shows available drop-off locations.