

Legend

- Shoreline, Pipeline, Artifacts
- Remedial Alternatives**
- Engineered Cap
- 3 Inch Sand Cover
- 6 Inch Sand Cover
- 6 Inch Residual Sand Cover
- 9 Inch Residual Sand Cover
- Completed Dredge Areas
- Sub-area/DMU Boundaries

Notes:

1. All areas presented depict as-constructed conditions.
2. Orthophoto provided by Winnebago County, WI.
3. The horizontal control is referenced to the NAD83 Wisconsin State Plane Coordinate System (Wisconsin Southern Zone).



GW PARTNERS

FIGURE 1-2
LOWER FOX RIVER OU1
LOCATION OF REMEDIAL ALTERNATIVES (SOUTH)

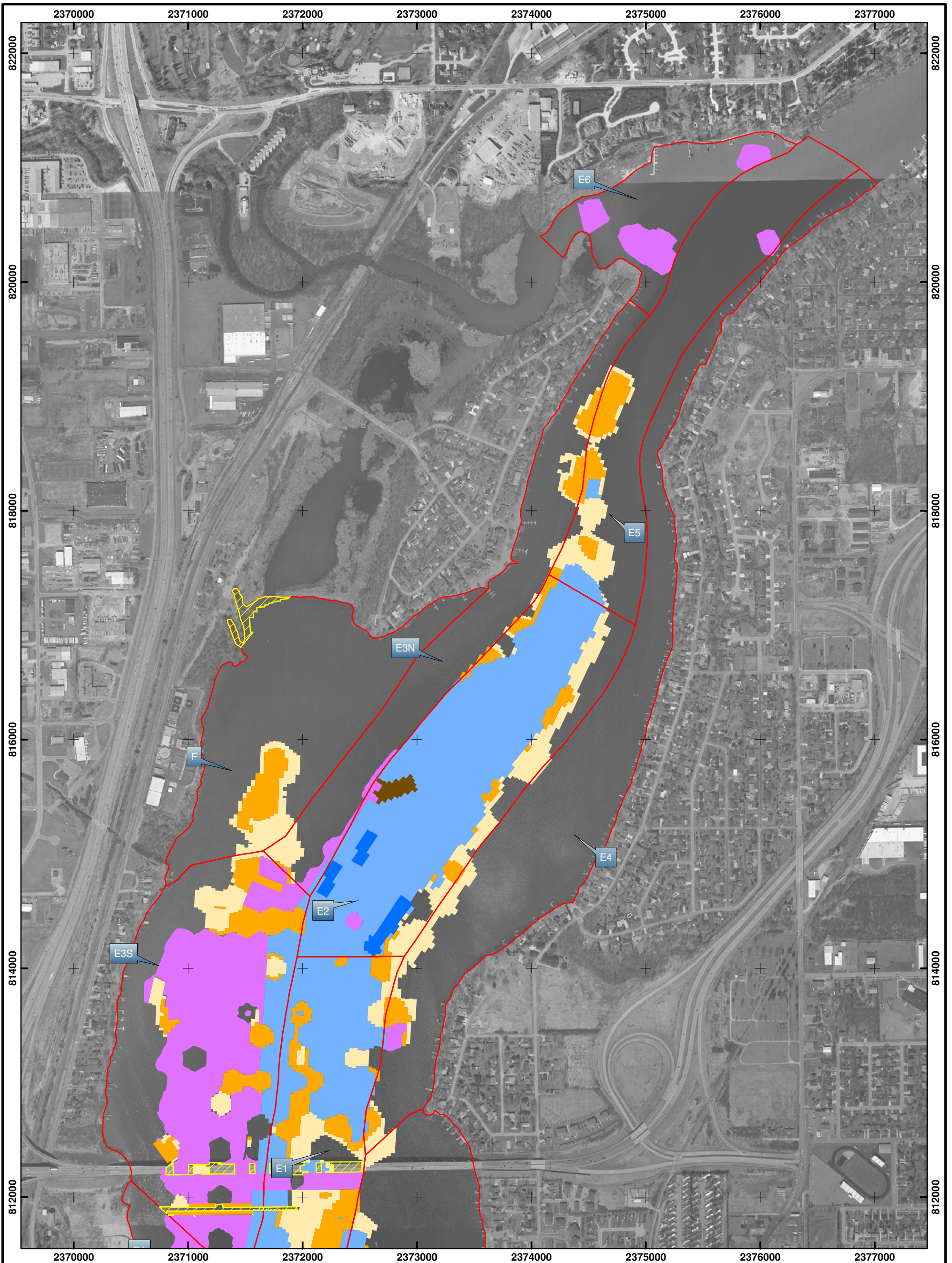
Scale: 0 400 800 Feet

Date: AUGUST, 2010

Drawn By: DAT

Checked By: NRA

Scope: 08G007



- Legend**
- Shoreline, Pipeline, Artifacts
 - Remedial Alternatives**
 - Cap Placement Test Area
 - Engineered Cap
 - 3 Inch Sand Cover
 - 6 Inch Sand Cover
 - 6 Inch Residual Sand Cover
 - 9 Inch Residual Sand Cover
 - Completed Dredge Areas
 - Sub-area/DMU Boundaries

Notes:

1. All areas presented depict as-constructed conditions.
2. Orthophoto provided by Winnebago County, WI.
3. The horizontal control is referenced to the NAD83 Wisconsin State Plane Coordinate System (Wisconsin Southern Zone).



GW PARTNERS

FIGURE 1-3
 LOWER FOX RIVER OU1
 LOCATION OF REMEDIAL ALTERNATIVES (NORTH)

Scale: 0 400 800 Feet

Date: AUGUST, 2010

Drawn By: DAT

Checked By: NRA

Scope: 08G007